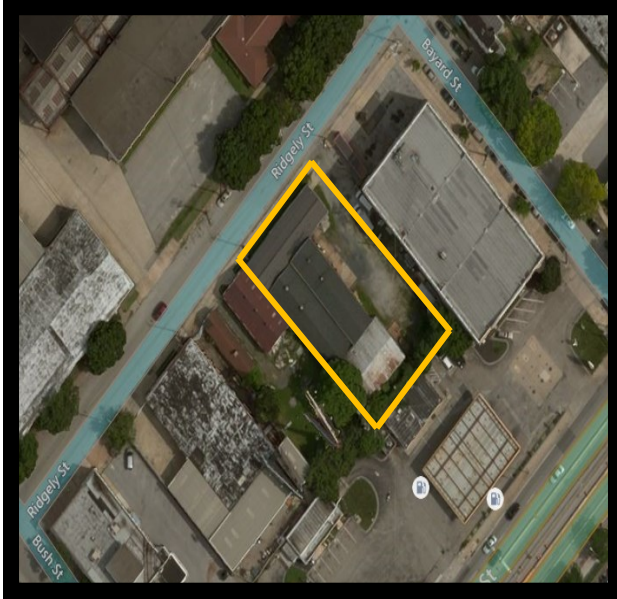




# GOLD AND COMPANY, LLC



**1601 Ridgely St. Baltimore, MD 21230**

## Gold And Company, LLC

**5601 Newbury St.  
Baltimore, MD 21209**

**Mitch Gold / Jim Chivers  
Gary Glover  
Office: 410.578.1300  
Fax: 410.578.0200  
www.goldcommercial.net**

- **Industrial Building For Sale**
- **10,000 Total SF**
- **M-2-1 Zoning**
- **+/- 1,200 SF Office**
- **Crane Served**
- **Includes Paint Booth**
- **Three Drive-In Doors**
- **Fenced Property**
- **Call For More Information**

This property offering is subject to change without notice. All information is deemed reliable but not guaranteed.

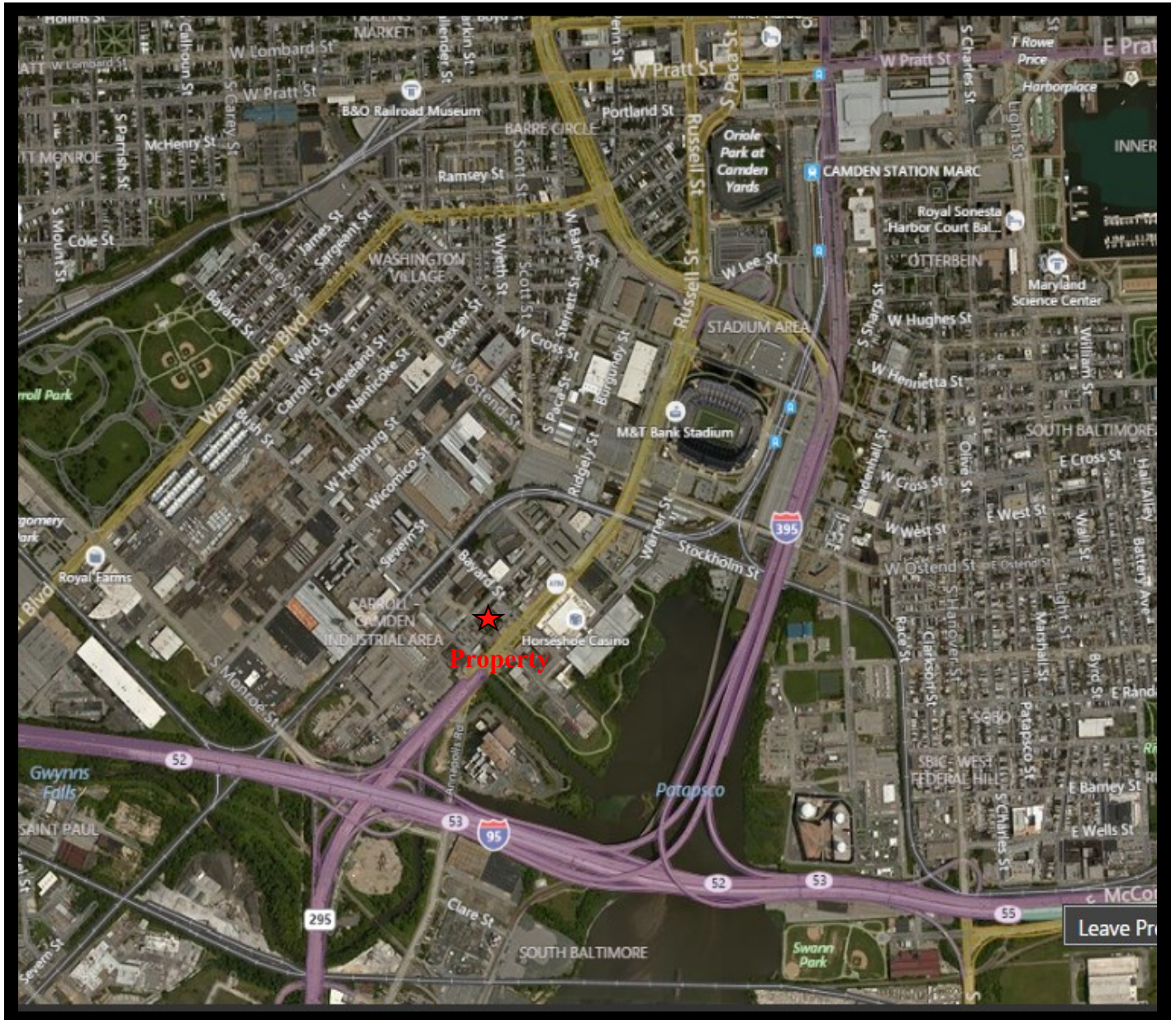




# Gold And Company

*Commercial Real Estate in the Baltimore Metropolitan Area*

**1601 Ridgely St. Baltimore, MD 21230**



**Jim Chivers / Gary Glover / Mitch Gold**  
**Gold And Company, LLC**  
**5601 Newbury St.**  
**Baltimore, MD 21209**

**410.578.1300 (Office)**  
**410.578.0200 (Fax)**  
**[www.goldcommercial.net](http://www.goldcommercial.net)**