



GOLD AND COMPANY, LLC



419 Eastern Blvd. Baltimore, MD 21221

Gold And Company, LLC

**5601 Newbury St.
Baltimore, MD 21209**

**Jim Chivers / Gary Glover
Office: 410.578.1300
Fax: 410.578.0200
www.goldcommercial.net**

- **Retail / Office Building FOR SALE**
- **+/- 4,500 sf Building Size**
- **+/- 10,500 sf Lot Size**
- **6-8 On Site Parking Spaces**
- **BL Zoning—Baltimore County**
- **Located on busy Eastern Blvd in Essex**
- **Column Free Building**
- **Glass Frontage / Showroom**
- **Drive-in Loading**
- **Call For More Information**

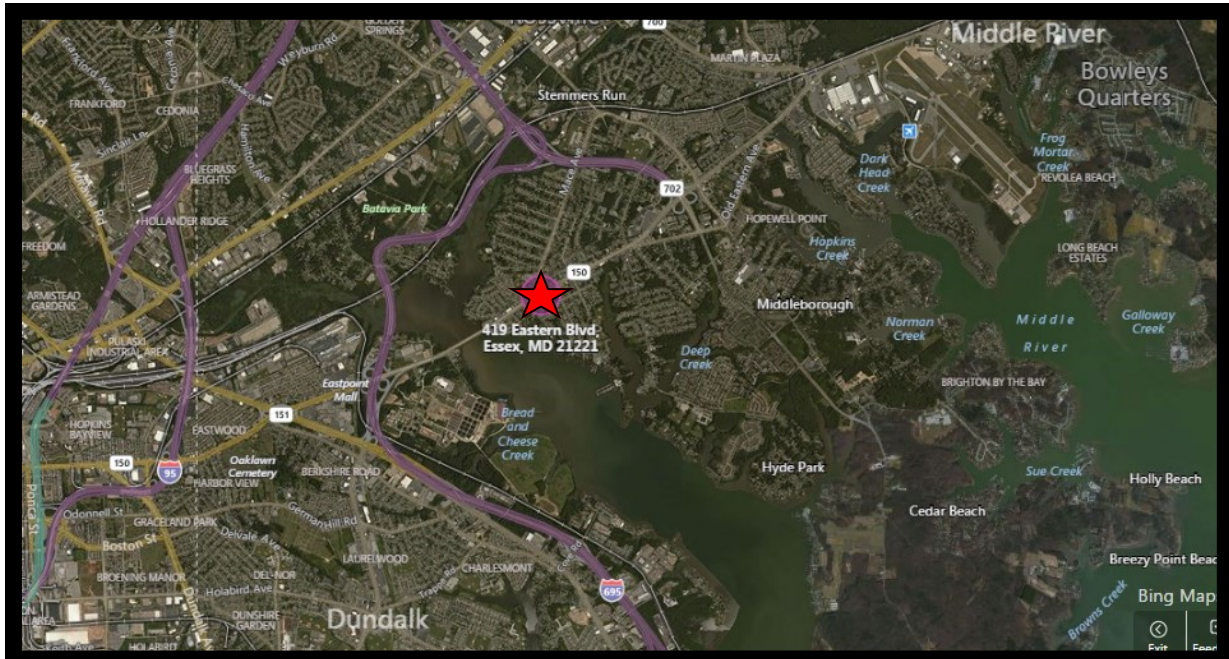
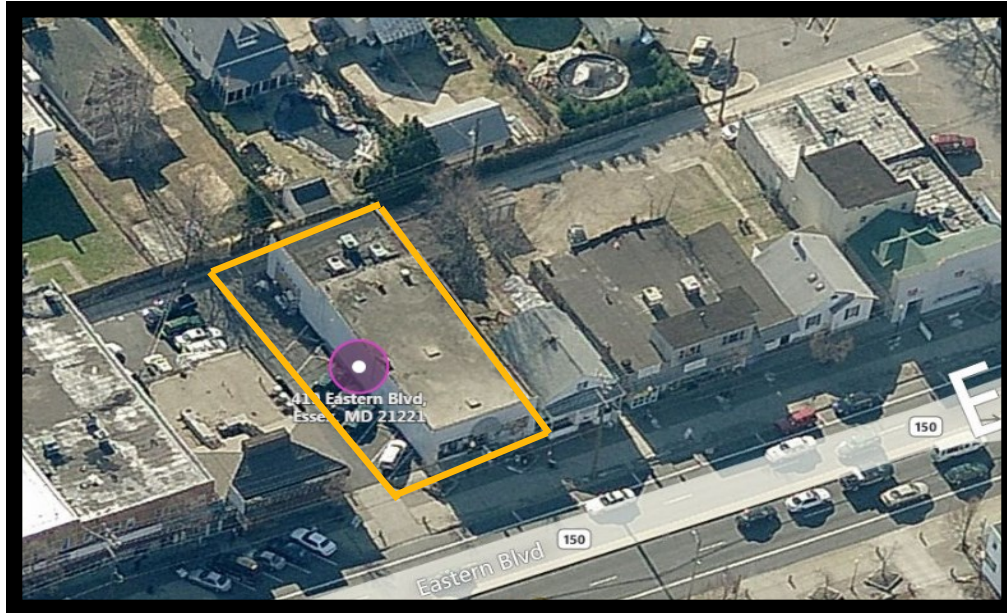
This property offering is subject to change without notice. All information is deemed reliable but not guaranteed.



Gold And Company

Commercial Real Estate in the Baltimore Metropolitan Area

419 Eastern Blvd. Baltimore, MD 21221



Jim Chivers / Gary Glover
Gold And Company, LLC
5601 Newbury St.
Baltimore, MD 21209

410.578.1300 (Office)
410.578.0200 (Fax)
www.goldcommercial.net

This property offering is subject to change without notice. All information is deemed reliable but not guaranteed.