



GOLD AND COMPANY, LLC



1627 Eastern Blvd., Essex, MD 21221

Gold And Company, LLC

**5601 Newbury St.
Baltimore, MD 21209**

**Jim Chivers
Office: 410.578.1300
Fax: 410.578.0200
www.goldcommercial.net**

- **Auto Repair Facility Available FOR LEASE**
- **2,890 sf**
- **Three Drive-In Bays**
- **Excellent Frontage on Eastern Blvd.**
- **Access on Eastern from both Directions**
- **BR-AS Zoning**
- **Well Maintained Property**
- **+/- 15 Surface Parking Spaces**
- **Office / Waiting Area**
- **Call For More Information**

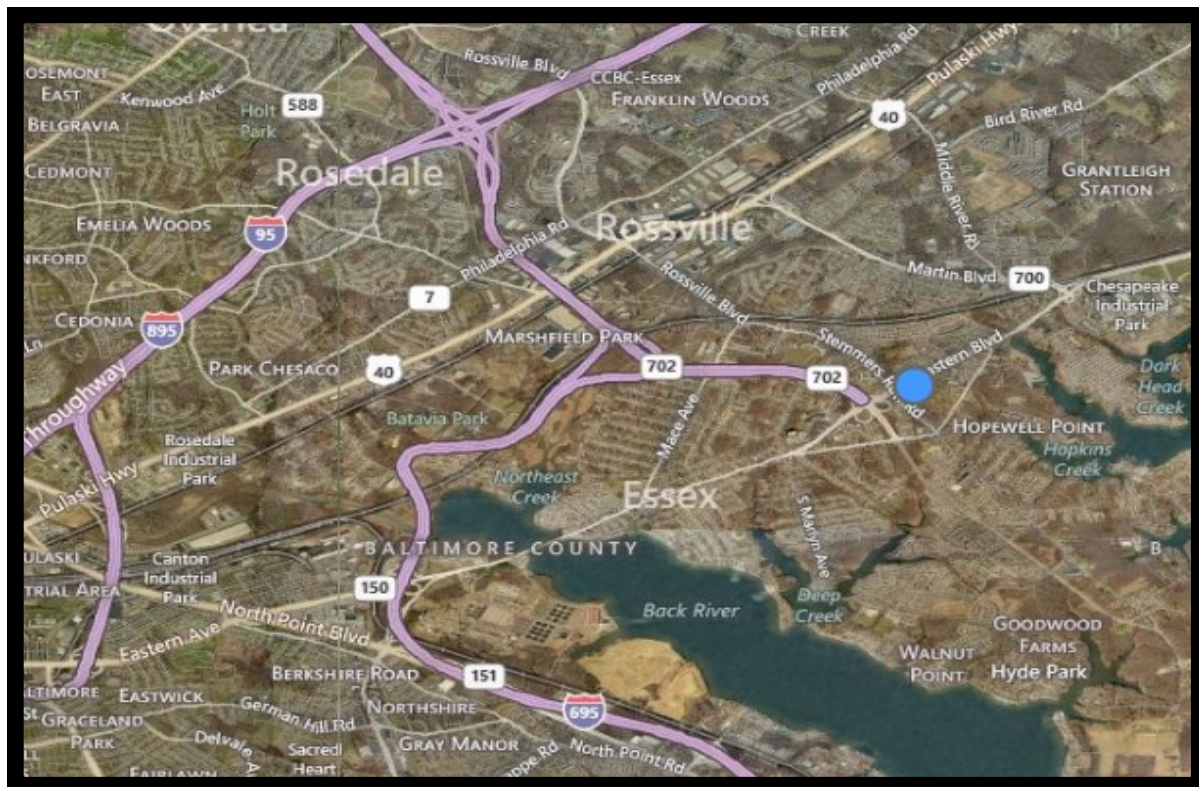
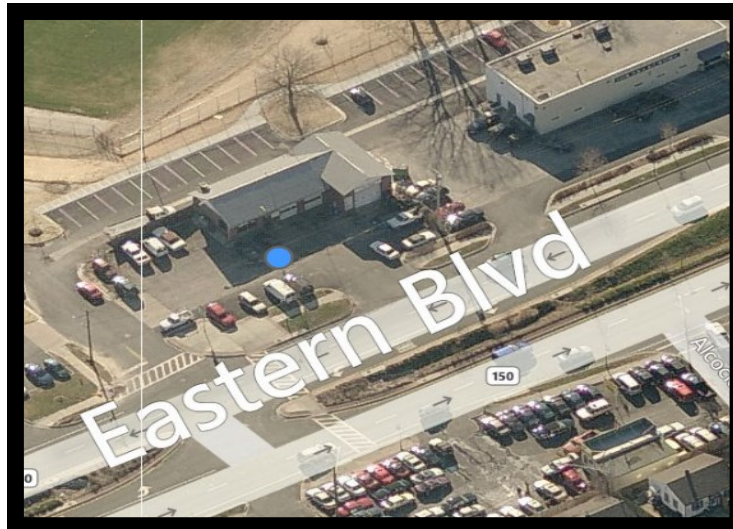
This property offering is subject to change without notice. All information is deemed reliable but not guaranteed.



Gold And Company

Commercial Real Estate in the Baltimore Metropolitan Area

1627 Eastern Blvd., Essex, MD 21221



Jim Chivers
Gold And Company, LLC
5601 Newbury St.
Baltimore, MD 21209

410.578.1300 (Office)
410.578.0200 (Fax)
www.goldcommercial.net

This property offering is subject to change without notice. All information is deemed reliable but not guaranteed.