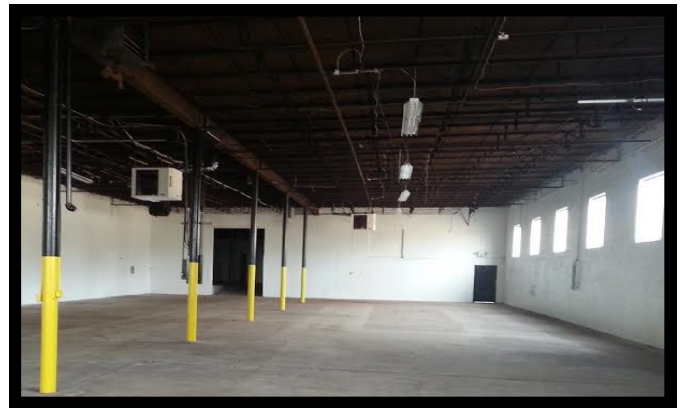
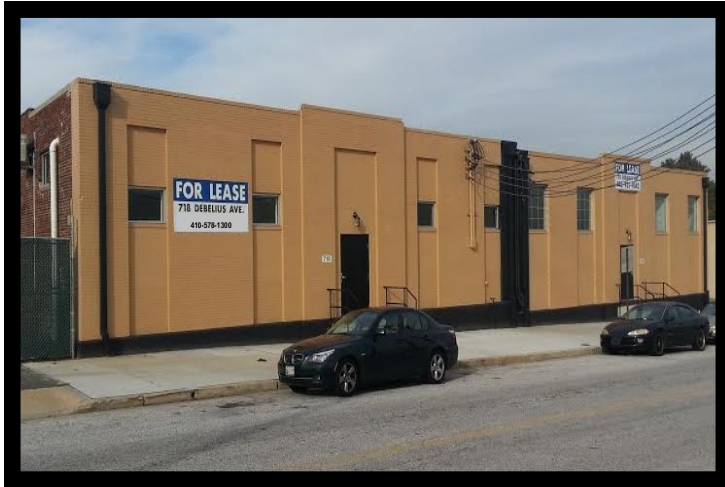




GOLD AND COMPANY, LLC



718—720 Debelius Ave, Baltimore, MD 21205

Gold And Company, LLC

**5601 Newbury St.
Baltimore, MD 21209**

**Jim Chivers / Gary Glover
Office: 410.578.1300
Fax: 410.578.0200
www.goldcommercial.net**

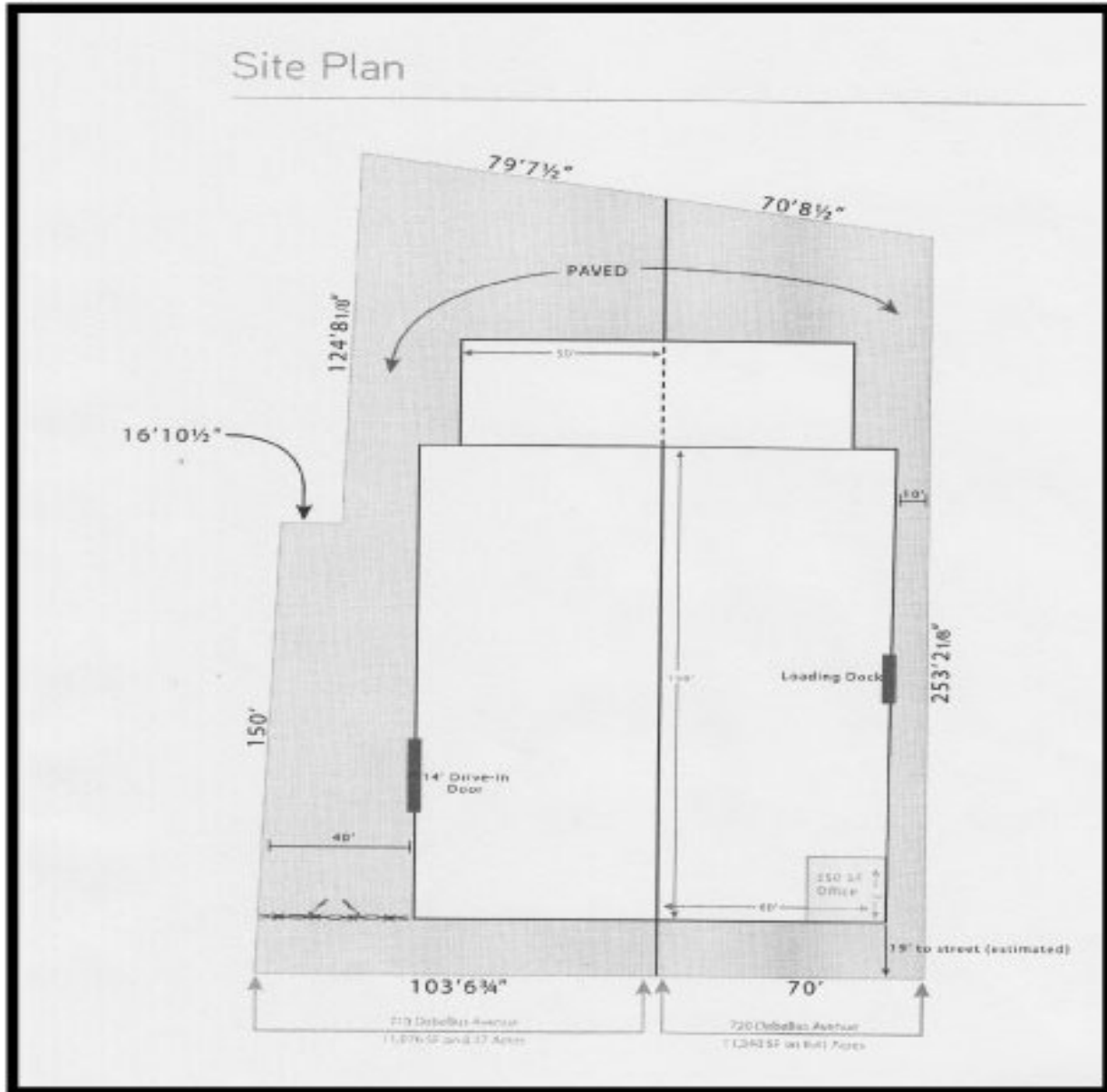
- **Industrial Property Available FOR LEASE**
- **12,000—24,000 sf Available**
- **Recently Renovated**
- **All New Mechanical Systems**
- **Zoning M-2-1 (Baltimore City)**
- **Loading Dock and Drive-In Access**
- **Heavy Power**
- **Close Access to I-95 / 695**
- **Ceiling Height 18'**
- **Call For More Information**

This property offering is subject to change without notice. All information is deemed reliable but not guaranteed.



GOLD AND COMPANY

718-720 Debelius Ave. Baltimore, MD 21205



Jim Chivers / Gary Glover
Gold And Company, LLC
5601 Newbury St.
Baltimore, MD 21209

410.578.1300 (Office)
410.578.0200 (Fax)
www.goldcommercial.net

This property offering is subject to change without notice. All information is deemed reliable but not guaranteed.