



GOLD AND COMPANY



4701-4703 Eastern Ave. Baltimore, MD 21224

Gold And Company, LLC

**5601 Newbury St.
Baltimore, MD 21209**

**Mitch Gold / Jim Chivers
Office: 410.578.1300
Fax: 410.578.0200
www.goldcommercial.net**

- **RETAIL / RESTAURANT BUILDING FOR SALE**
- **30' Frontage on Eastern Ave.**
- **Includes all Restaurant Equipment / Business Sold Separately**
- **B-2-2 Zoning**
- **+/- 3,900 SF**
- **Current Tenant is on Month to Month Lease**
- **Located in Greektown**
- **Rear Parking Garage (currently leased)**
- **Near Johns Hopkins Bayview Campus**
- **2 Stories - Includes Basement for Storage or Office Space**
- **CALL FOR MORE INFORMATION AND PRICING**

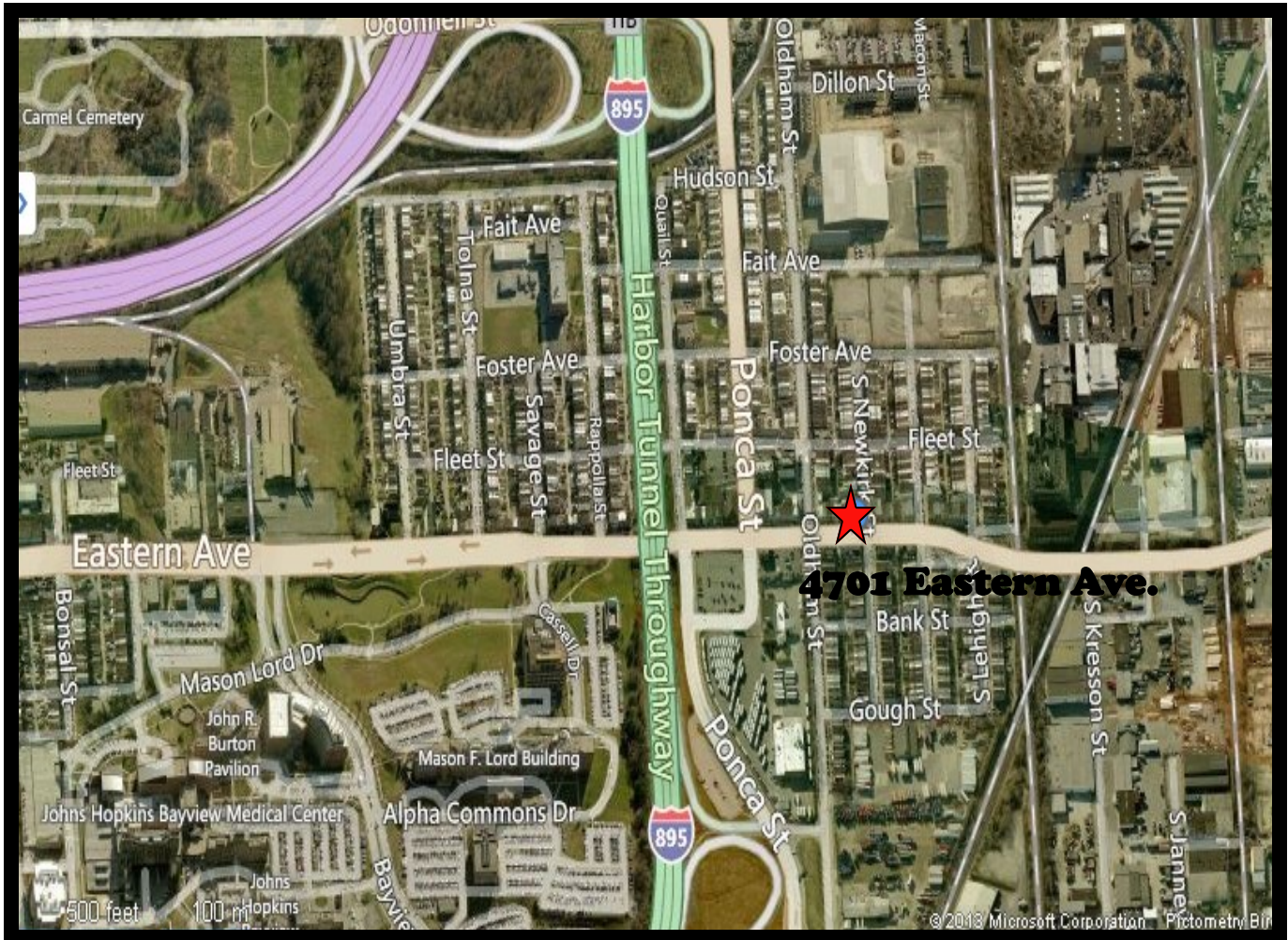
This property offering is subject to change without notice. All information is deemed reliable but not guaranteed.



GOLD AND COMPANY

Retail Property For Sale

4701 Eastern Ave. Baltimore, MD 21224



**Gold And
Company, LLC**

**Mitch Gold / Jim Chivers
Office: 410.578.1300
Fax: 410.578.0200
www.goldcommercial.net**