



GOLD AND COMPANY, LLC



601 Back River Neck Rd. Essex, MD 21221

Gold And Company, LLC

**5601 Newbury St.
Baltimore, MD 21209**

**Jim Chivers
Office: 410.578.1300
Fax: 410.578.0200
www.goldcommercial.net**

- **Retail / Office Building AVAILABLE**
- **+/- 7,000 sf**
- **1.28 Acres**
- **First Class Office Build-Out**
- **BL Zoning—Baltimore County**
- **Easy Access to 702 / 695 East / I-95**
- **Rental Income in Place**
- **Located at Interstecion of Cape May Rd.
and Back River Neck Rd.**
- **Call For More Information**

This property offering is subject to change without notice. All information is deemed reliable but not guaranteed.

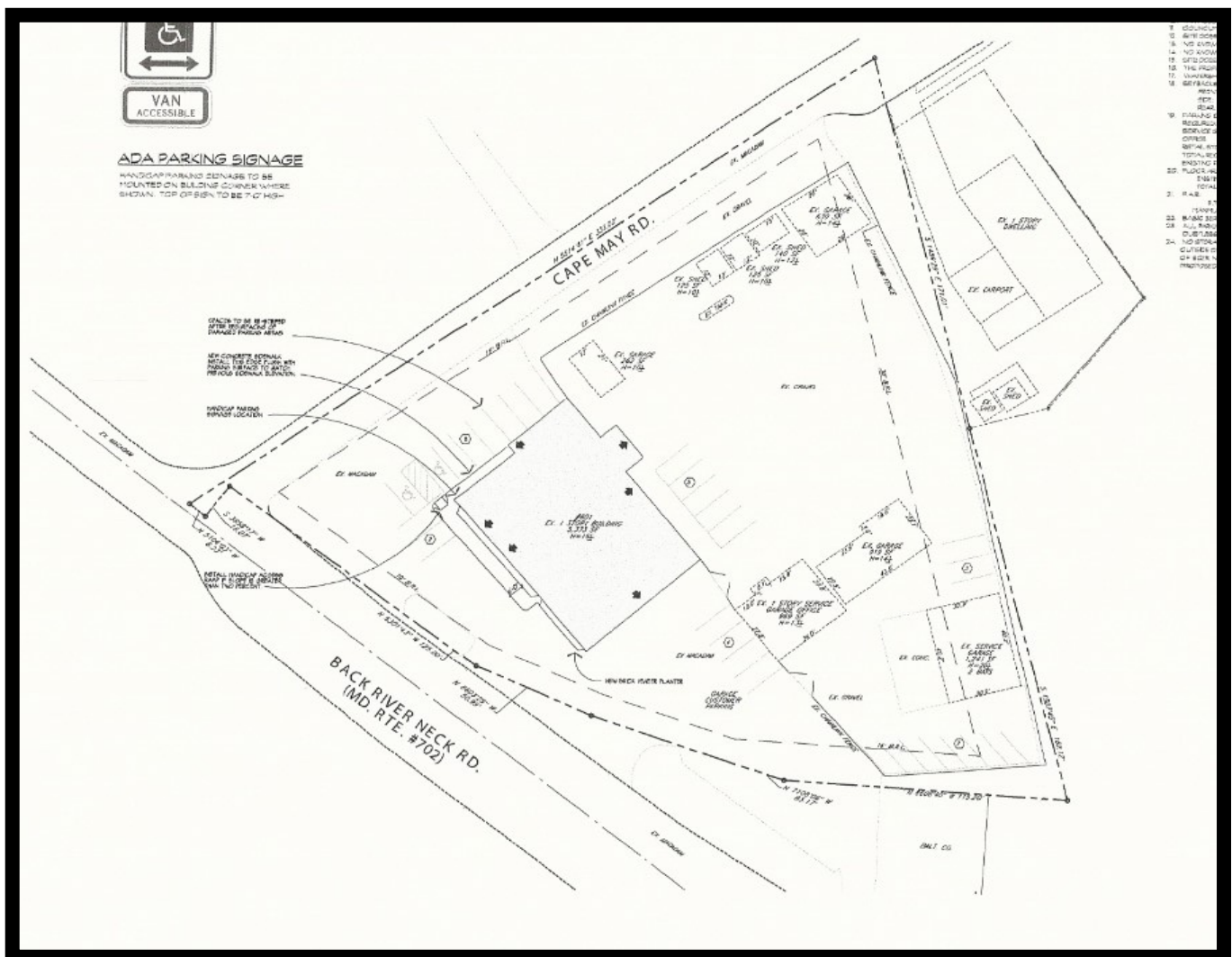


Gold And Company

Commercial Real Estate in the Baltimore Metropolitan Area

601 Back River Neck Rd. Essex, MD 21221

SITE SURVEY



Jim Chivers
Gold And Company, LLC
5601 Newbury St.
Baltimore, MD 21209

410.578.1300 (Office)
410.578.0200 (Fax)
www.goldcommercial.net



Gold And Company

Commercial Real Estate in the Baltimore Metropolitan Area

601 Back River Neck Rd. Essex, MD 21221

AERIAL



Jim Chivers
Gold And Company, LLC
5601 Newbury St.
Baltimore, MD 21209

410.578.1300 (Office)
410.578.0200 (Fax)
www.goldcommercial.net

This property offering is subject to change without notice. All information is deemed reliable but not guaranteed.

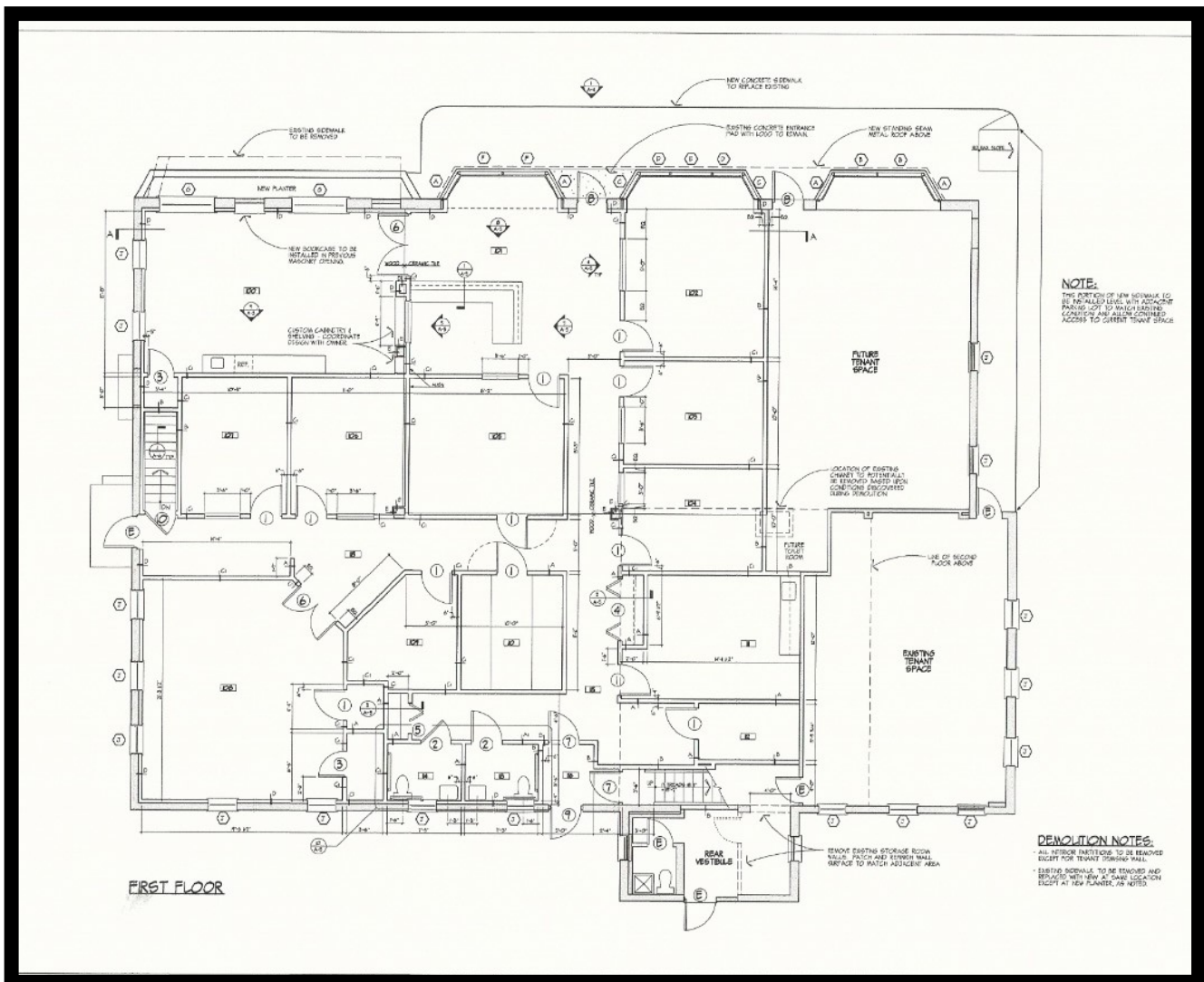


Gold And Company

Commercial Real Estate in the Baltimore Metropolitan Area

601 Back River Neck Rd. Essex, MD 21221

MAIN BUILDING FLOORPLAN



Jim Chivers
Gold And Company, LLC
5601 Newbury St.
Baltimore, MD 21209

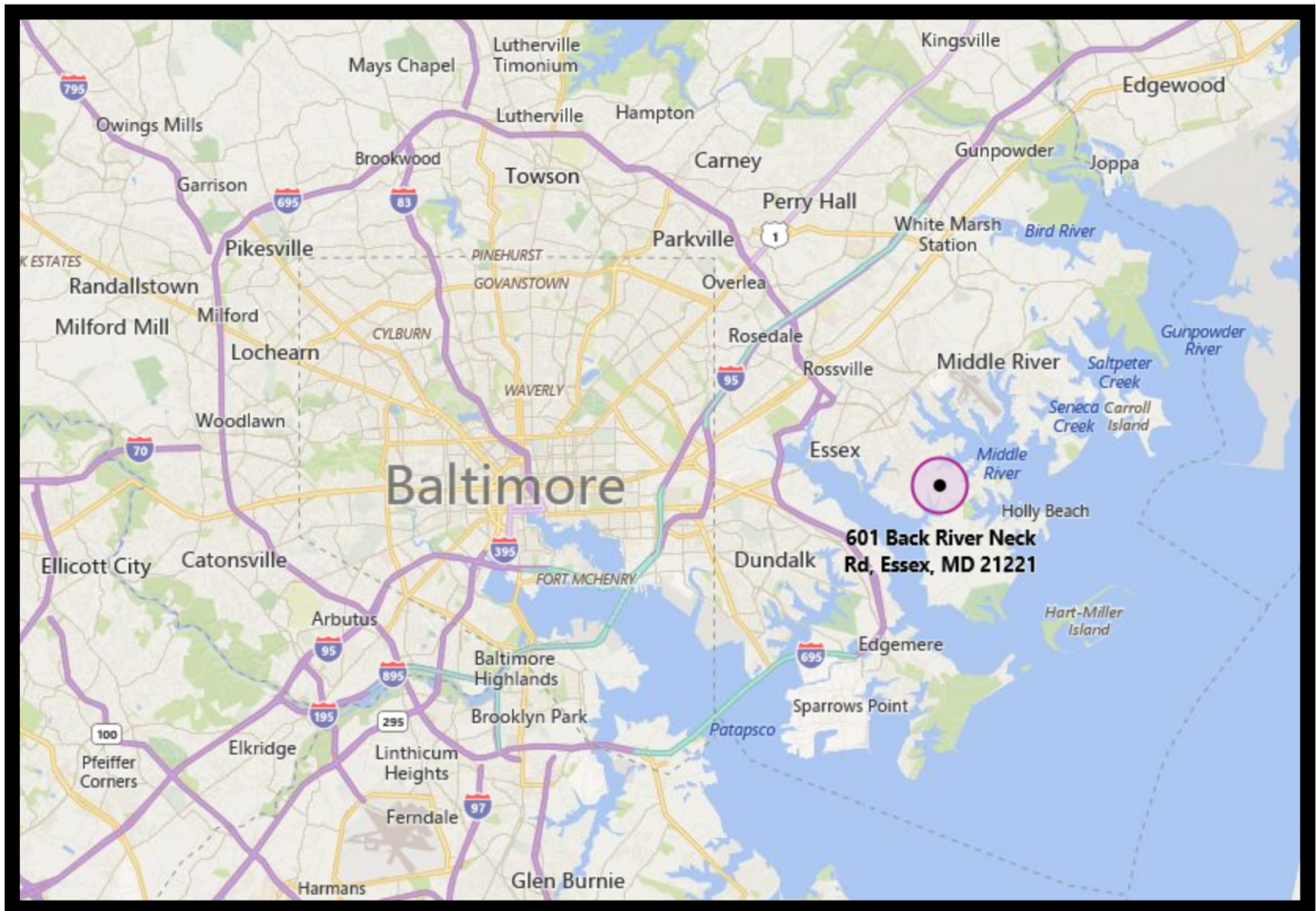
410.578.1300 (Office)
410.578.0200 (Fax)
www.goldcommercial.net



Gold And Company

Commercial Real Estate in the Baltimore Metropolitan Area

601 Back River Neck Rd. Essex, MD 21221



Jim Chivers
Gold And Company, LLC
5601 Newbury St.
Baltimore, MD 21209

410.578.1300 (Office)
410.578.0200 (Fax)
www.goldcommercial.net