



GOLD AND COMPANY, LLC



7110 Commercial Ave. Baltimore, MD 21237

Gold And Company, LLC

**5601 Newbury St.
Baltimore, MD 21209**

**Jim Chivers
jim@goldcommercial.net
443.928.7522**

**Mitch Gold
mitch@goldcommercial.net
410.456.2492**

**Gary Glover
gary@goldcommercial.net
443.629.2133**

**Alex Simone
alex@goldcommercial.net
443.845.4413**

**Office: 410.578.1300
www.goldcommercial.net**

- **East Baltimore Industrial Property**
- **FOR SALE**
- **+/- 5,000 sf Building**
- **Drive-In Maintenance Building**
- **Renovated Offices**
- **1.15 Acres**
- **I-1 Zoning—Baltimore City**
- **Billboard Income / I-895 Frontage**
- **Excellent Access to I-95**
- **Call For More Information**

This property offering is subject to change without notice. All information is deemed reliable but not guaranteed.

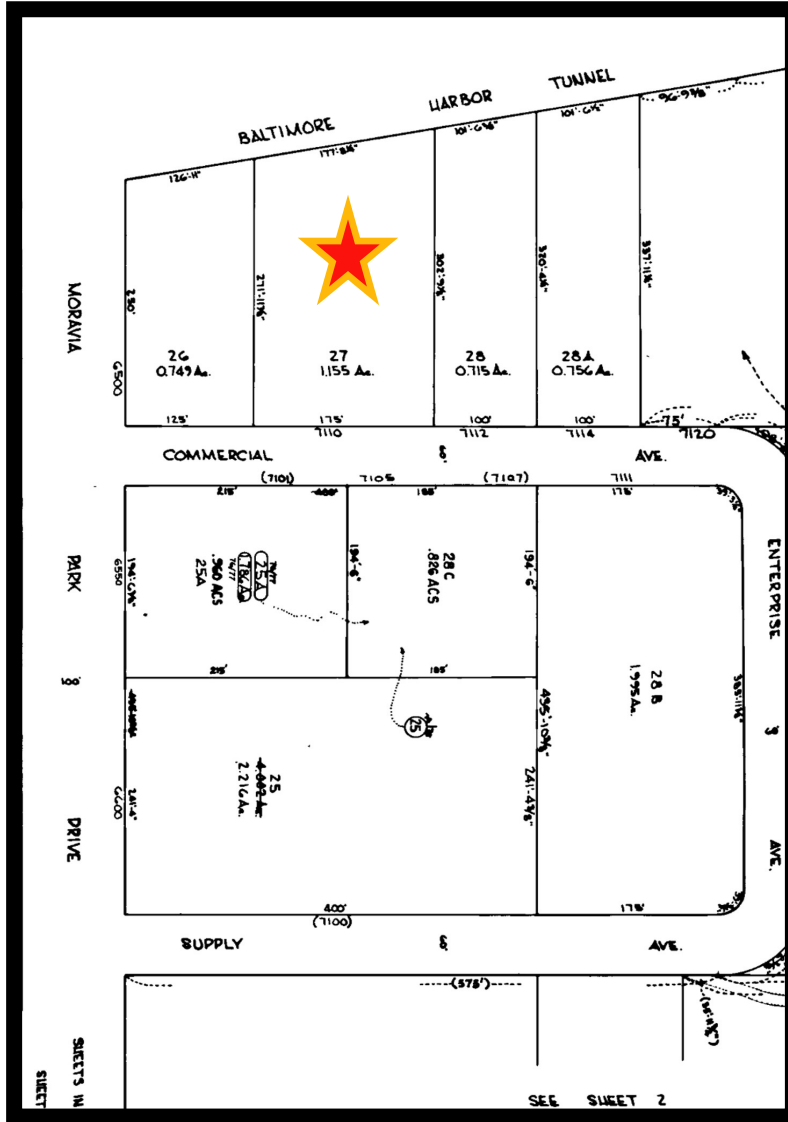


Gold And Company

Commercial Real Estate in the Baltimore Metropolitan Area

7110 Commercial Ave. Baltimore, MD 21237

Block Map



Jim Chivers / Mitch Gold / Gary Glover
Gold And Company, LLC
5601 Newbury St.
Baltimore, MD 21209

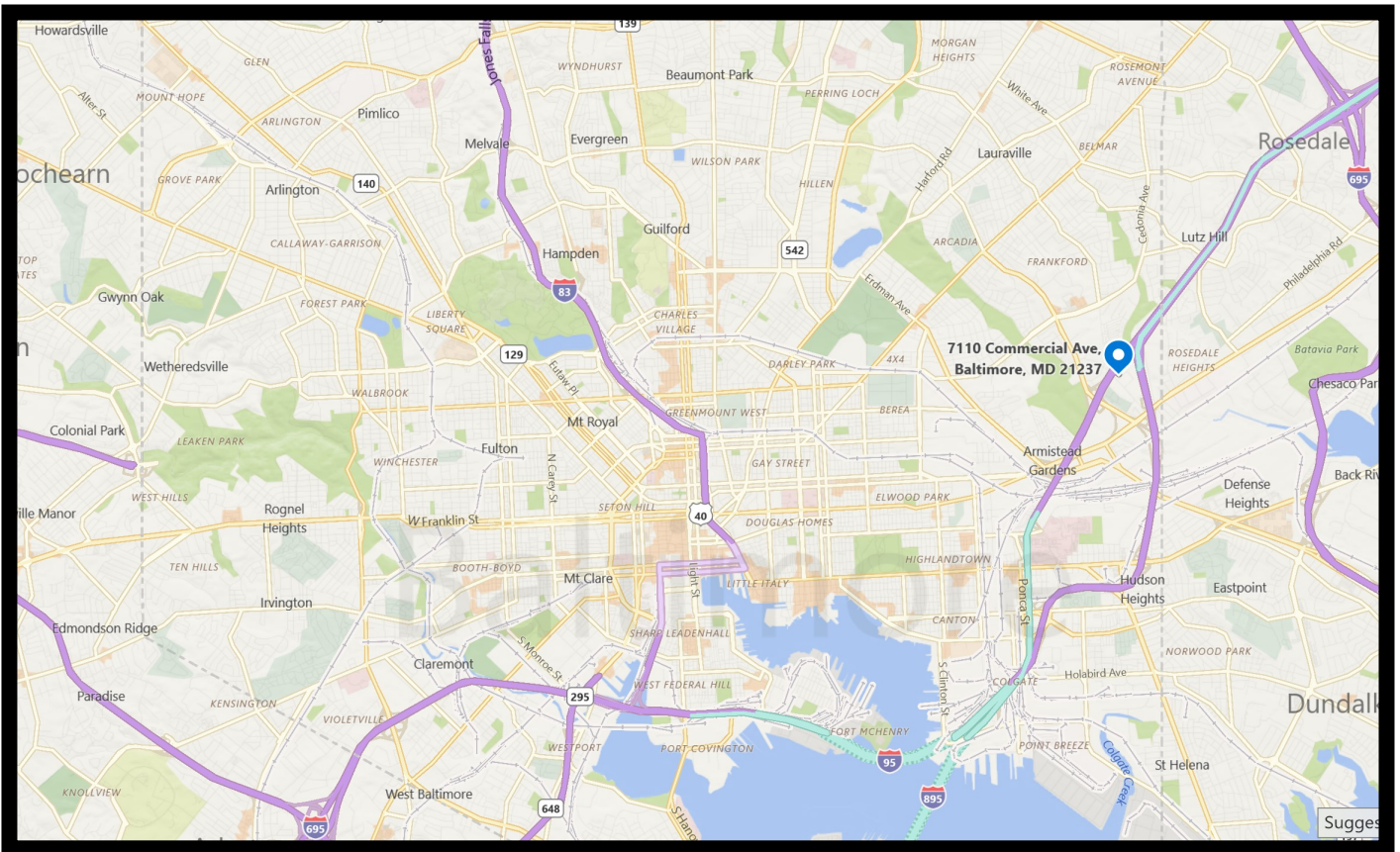
www.goldcommercial.net
410.578.1300



Gold And Company

Commercial Real Estate in the Baltimore Metropolitan Area

7110 Commercial Ave. Baltimore, MD 21237



Jim Chivers / Mitch Gold / Gary Glover / Alex Simone

Gold And Company, LLC

5601 Newbury St.

Baltimore, MD 21209

410.578.1300

www.goldcommercial.net