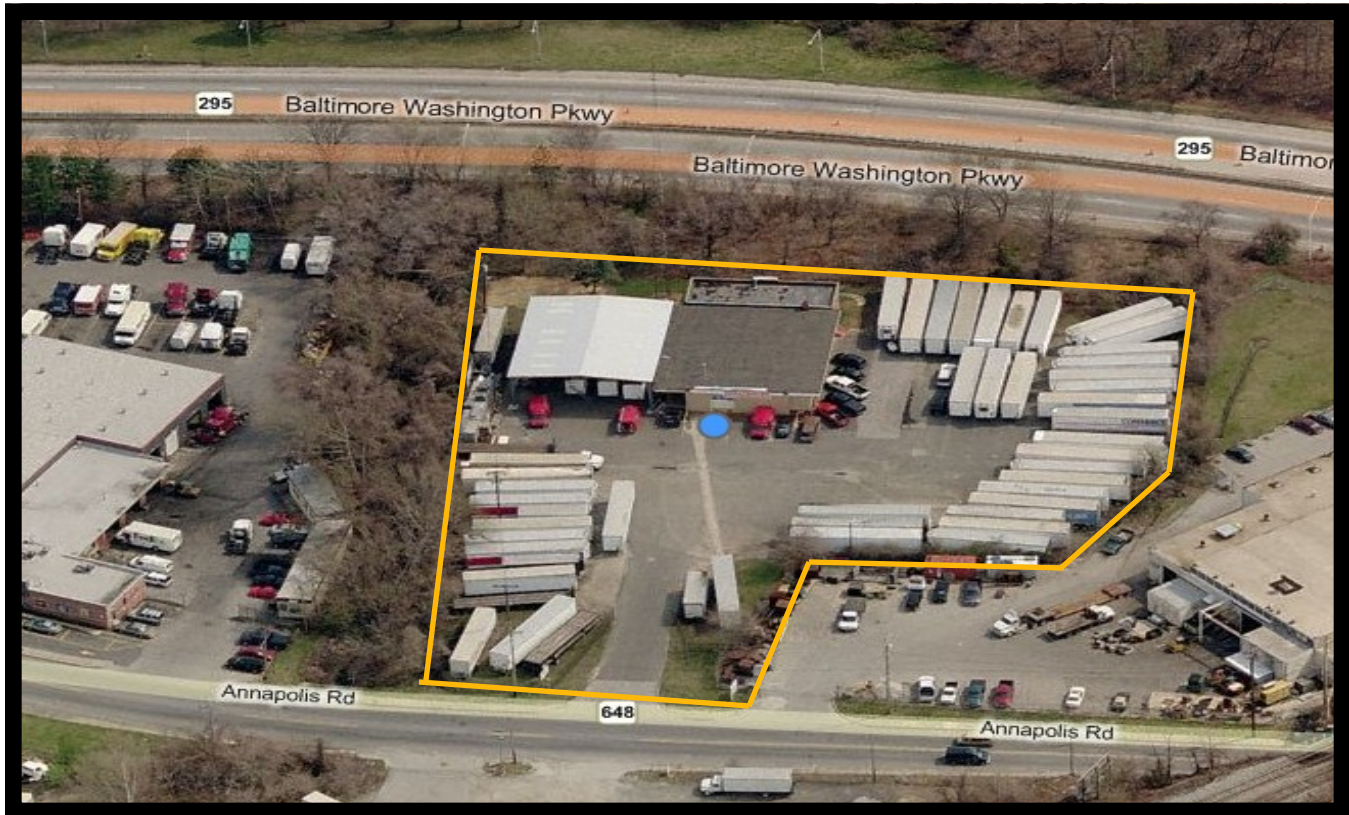




# GOLD AND COMPANY



**2801 Annapolis Ave. Baltimore, MD 21230**

## Gold And Company, LLC

**5601 Newbury St.  
Baltimore, MD 21209**

**Mitch Gold / Jim Chivers  
Office: 410.578.1300  
Fax: 410.578.0200  
www.goldcommercial.net**

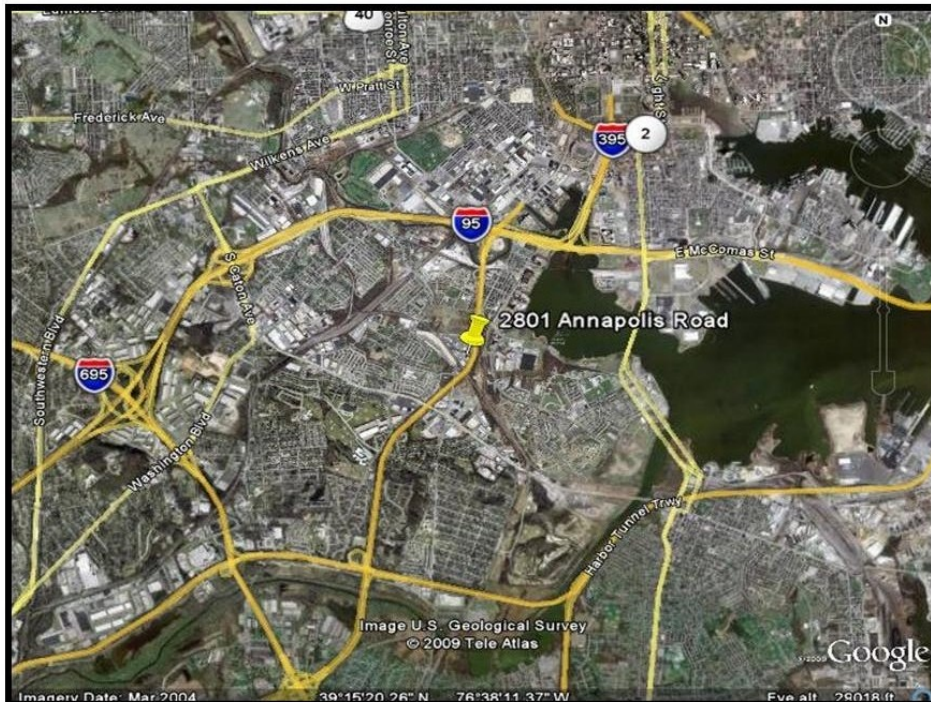
- **Industrial Property For Sale—Baltimore City**
- **Excellent Access to 295 and Interstate 95**
- **+/- 8,600 SF**
- **60' x 70' Steel Canopy**
- **6 Cross Loading Docks**
- **+/- 2.26 Acres**
- **Asphalt and Paved Lot**
- **Renovated Offices**
- **M-2-1 Zoning**
- **Call For More Information**



# GOLD AND COMPANY

## INDUSTRIAL PROPERTY FOR SALE

**2801 Annapolis Rd. Baltimore, MD**



**Gold And  
Company, LLC**

**Mitch Gold / Jim Chivers  
Office: 410.578.1300  
Fax: 410.578.0200  
[www.goldcommercial.net](http://www.goldcommercial.net)**