



GOLD AND COMPANY, LLC



2415 Baldwin Mill Rd. Fallston, MD 21047

Gold And Company, LLC

**5601 Newbury St.
Baltimore, MD 21209**

Jim Chivers

Office: 410.578.1300

Fax: 410.578.0200

www.goldcommercial.net

- **Historic Office Building FOR SALE**
- **Off Street Parking—+/- .75 Acre**
- **Harford County Location**
- **Built in 1920**
- **+/- 2,000 sf Total Building**
- **Two Floors**
- **Rental Income**
- **Ideal For Professional Offices**
- **R-O-W Zoning**
- **CALL FOR MORE INFORMATION**

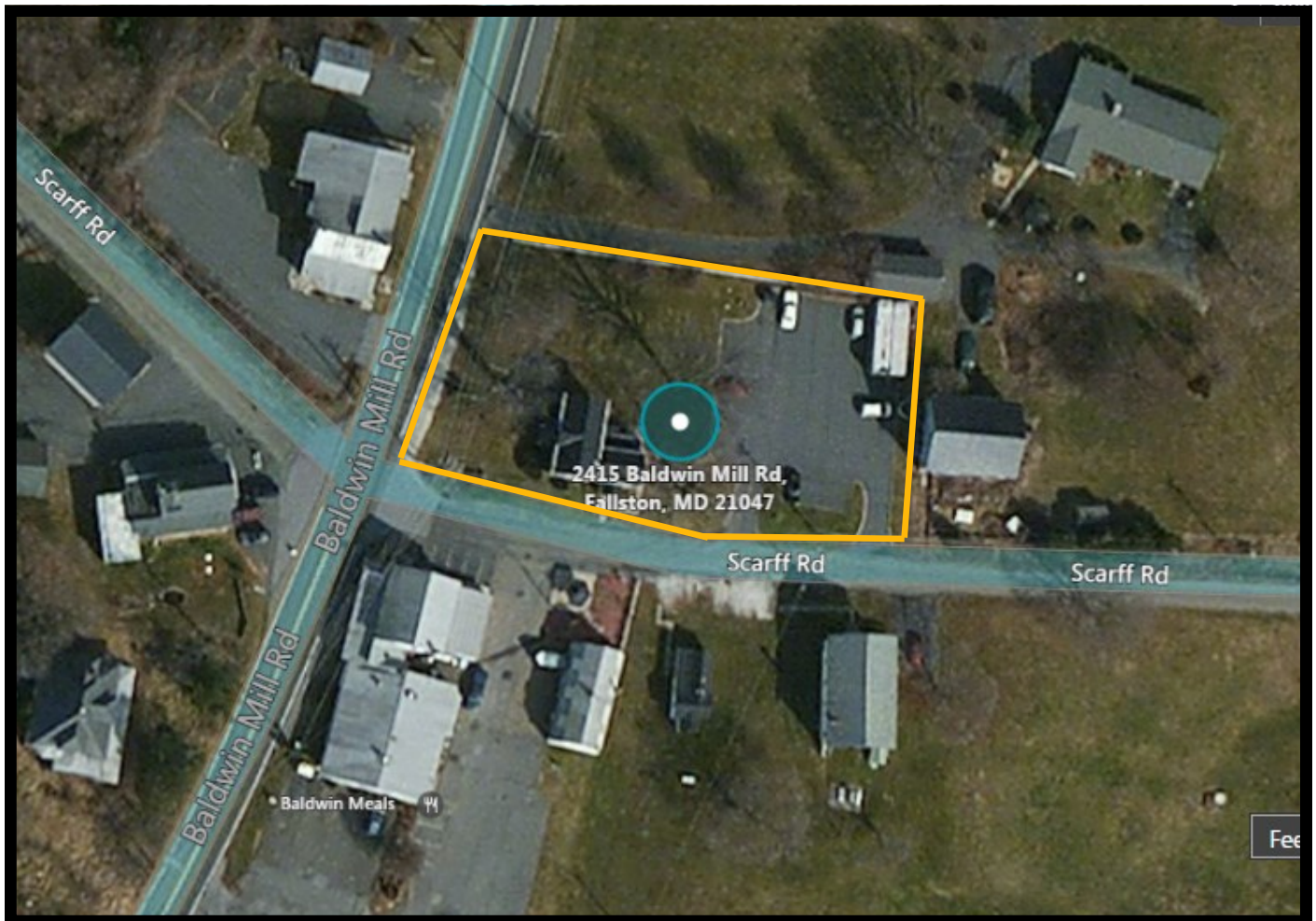


Gold And Company

Commercial Real Estate in the Baltimore Metropolitan Area

2415 Baldwin Mill Rd. Fallston, MD 21047

AERIAL VIEW



Jim Chivers
Gold And Company, LLC
5601 Newbury St.
Baltimore, MD 21209

410.578.1300 (Office)
410.578.0200 (Fax)
www.goldcommercial.net