



GOLD AND COMPANY, LLC



1801—1805 Cherry Hill Road, Baltimore, MD 21230

Gold And Company, LLC

**5601 Newbury St.
Baltimore, MD 21209**

**Mitch Gold / Jim Chivers
Office: 410.578.1300
Fax: 410.578.0200
www.goldcommercial.net**

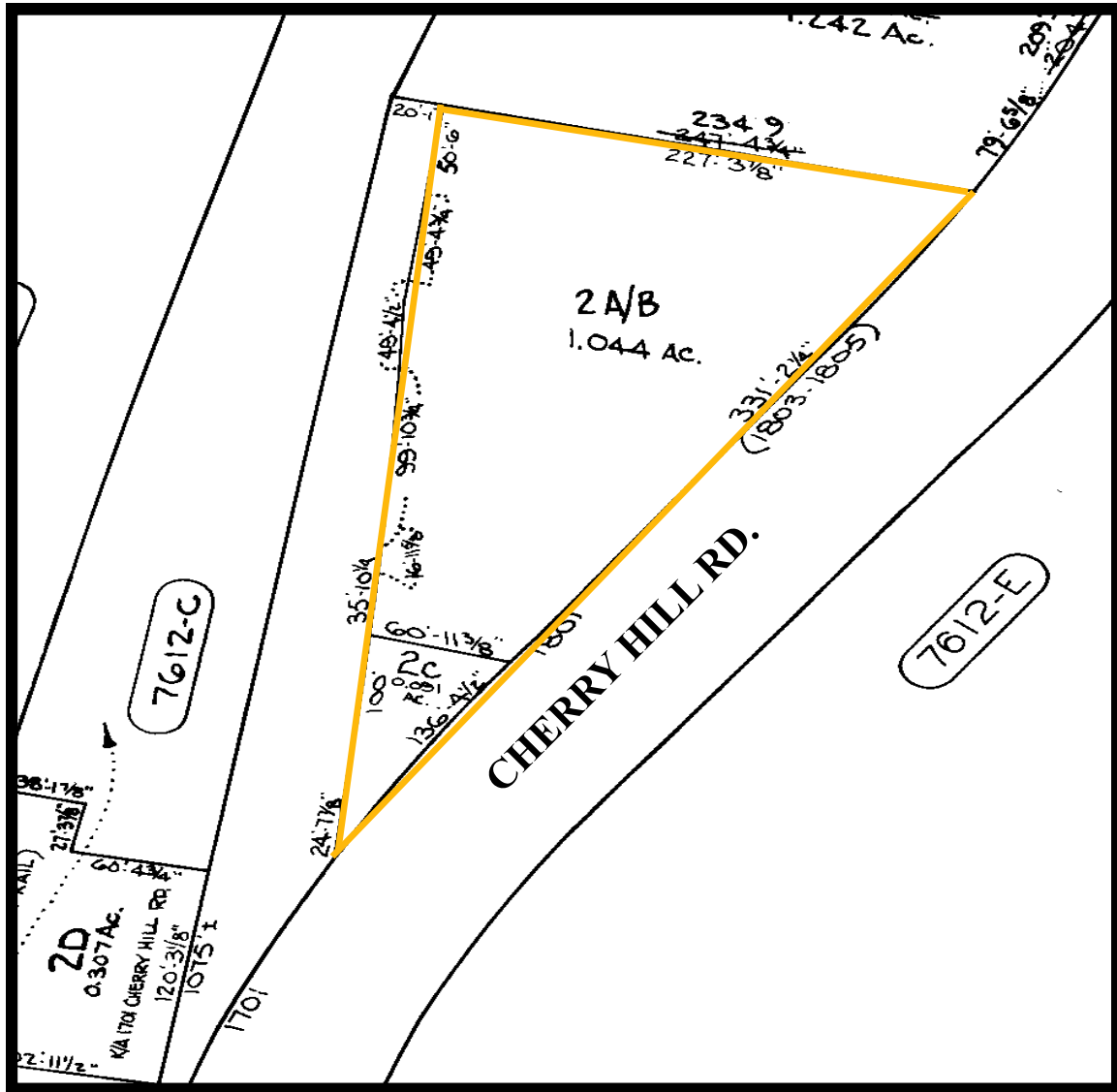
- **Industrial Property FOR SALE**
- **21,500 Total SF**
- **1.04 Acres**
- **South Baltimore City Location**
- **Close Access to I-95**
- **M-2-1 Zoning**
- **Located in Enterprise Zone**
- **CALL FOR MORE INFORMATION**



Gold And Company

Commercial Real Estate in the Baltimore Metropolitan Area

1801—1805 Cherry Hill Road, Baltimore, MD 21230



Mitch Gold / Jim Chivers
Gold And Company, LLC
5601 Newbury St.
Baltimore, MD 21209

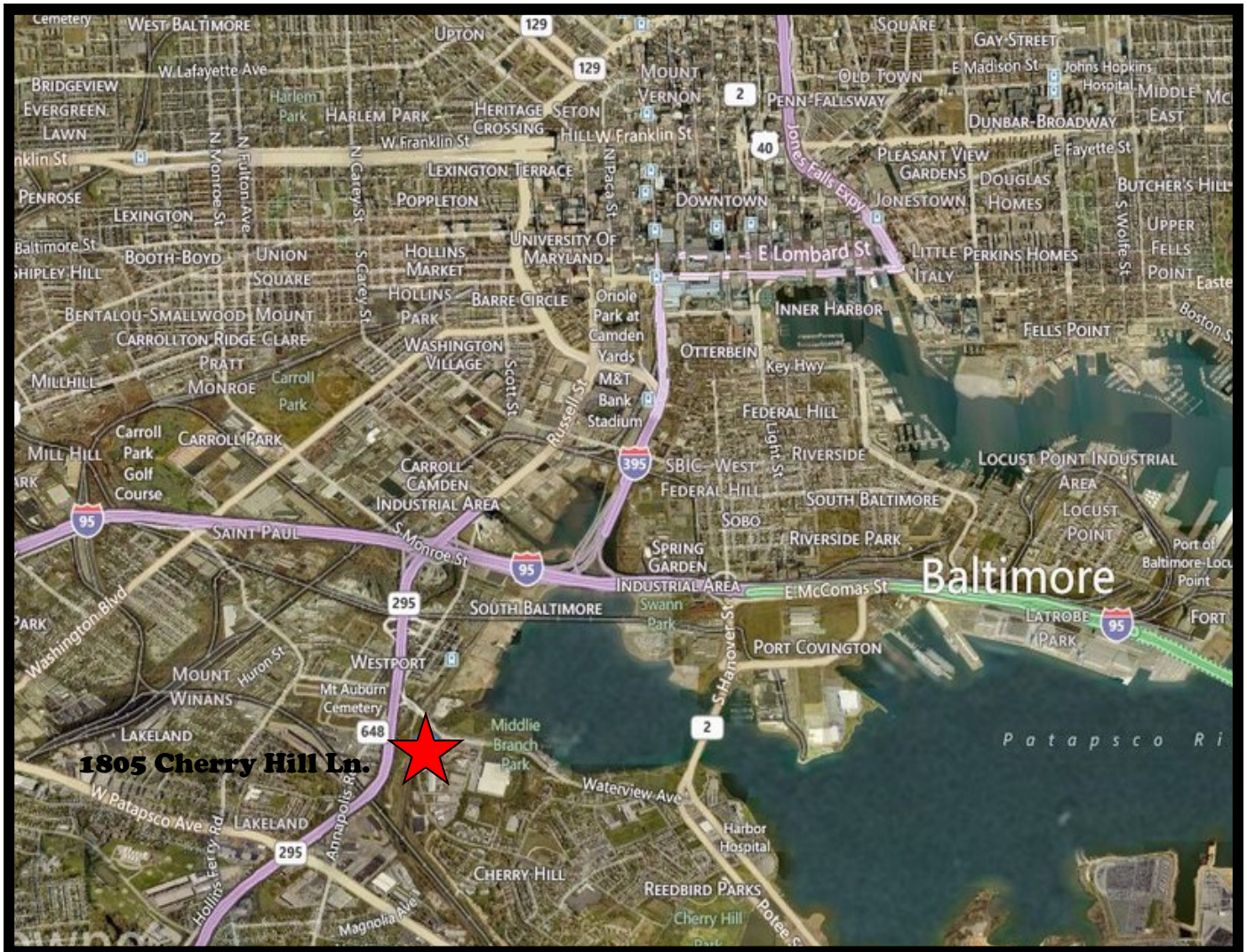
410.578.1300 (Office)
410.578.0200 (Fax)
www.goldcommercial.net



Gold And Company

Commercial Real Estate in the Baltimore Metropolitan Area

1801—1805 Cherry Hill Road, Baltimore, MD 21230



Mitch Gold / Jim Chivers
Gold And Company, LLC
5601 Newbury St.
Baltimore, MD 21209

410.578.1300 (Office)
410.578.0200 (Fax)
www.goldcommercial.net

This property offering is subject to change without notice. All information is deemed reliable but not guaranteed.