



GOLD AND COMPANY, LLC



1700 Cherry Hill Rd. and 2520 Erick St. Baltimore, MD 21230

Gold And Company, LLC

**5601 Newbury St.
Baltimore, MD 21209**

Jim Chivers
443.928.7522 (Cell)
jim@goldcommercial.net

Mitch Gold
410.456.2492 (Cell)
mitch@goldcommercial.net

Gary Glover
443.629.2133 (Cell)
gary@goldcommercial.net

www.goldcommercial.net

- **For Sale**
- **+/- 7,000 sf Flex Building**
- **4 Oversized Drive-In Doors**
- **2.3 Total Acres**
- **South Balto. City / Near New Development**
- **Easy Access to All Main Highways**
- **Room for Additional Buildings**
- **Potential Access to Erick St.**
- **Currently TOD-4 Zoning—Formerly M-2-1**
- **Across from Light Rail Stop**
- **Call For More Information**

This property offering is subject to change without notice. All information is deemed reliable but not guaranteed.

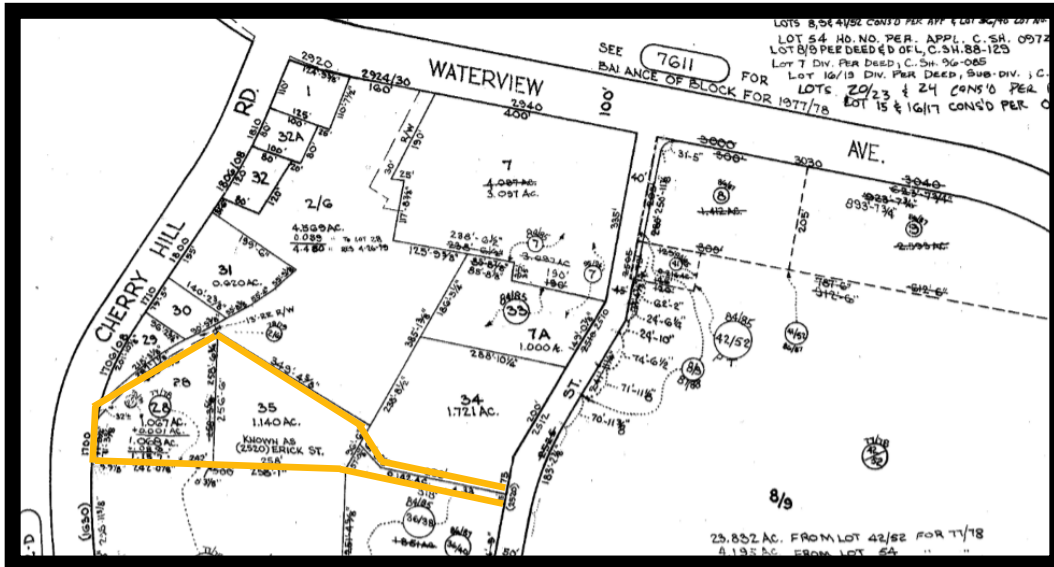


Gold And Company

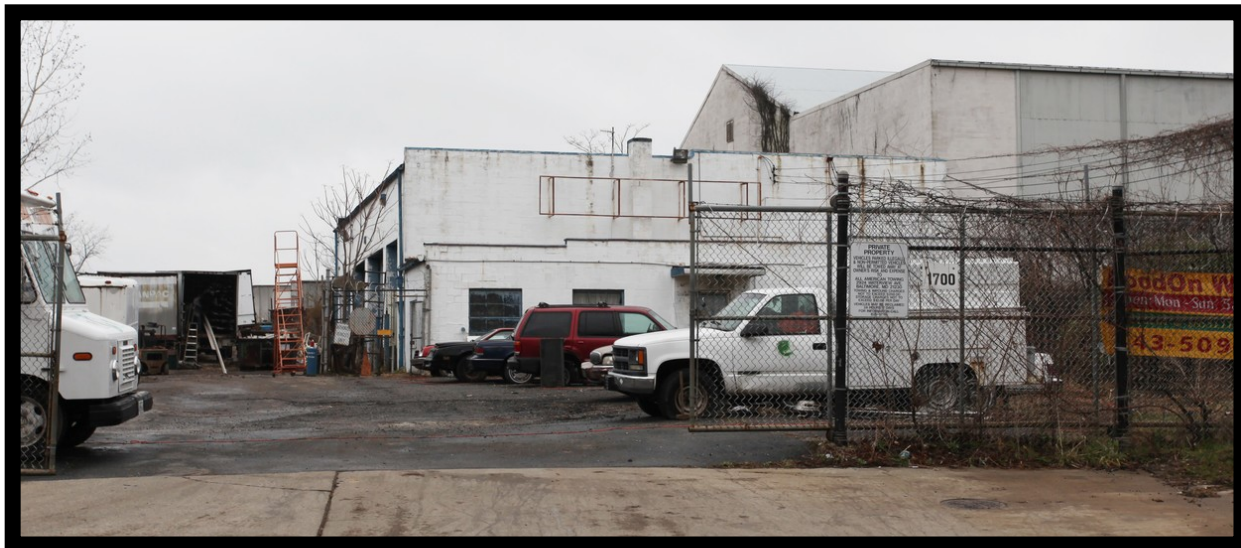
Commercial Real Estate in the Baltimore Metropolitan Area

1700 Cherry Hill Rd. and 2520 Erick St. Baltimore, MD 21230

Block Map



Street View



Jim Chivers / Mitch Gold / Gary Glover
Gold And Company, LLC
5601 Newbury St.
Baltimore, MD 21209

410.578.1300 (Office)
410.578.0200 (Fax)
www.goldcommercial.net

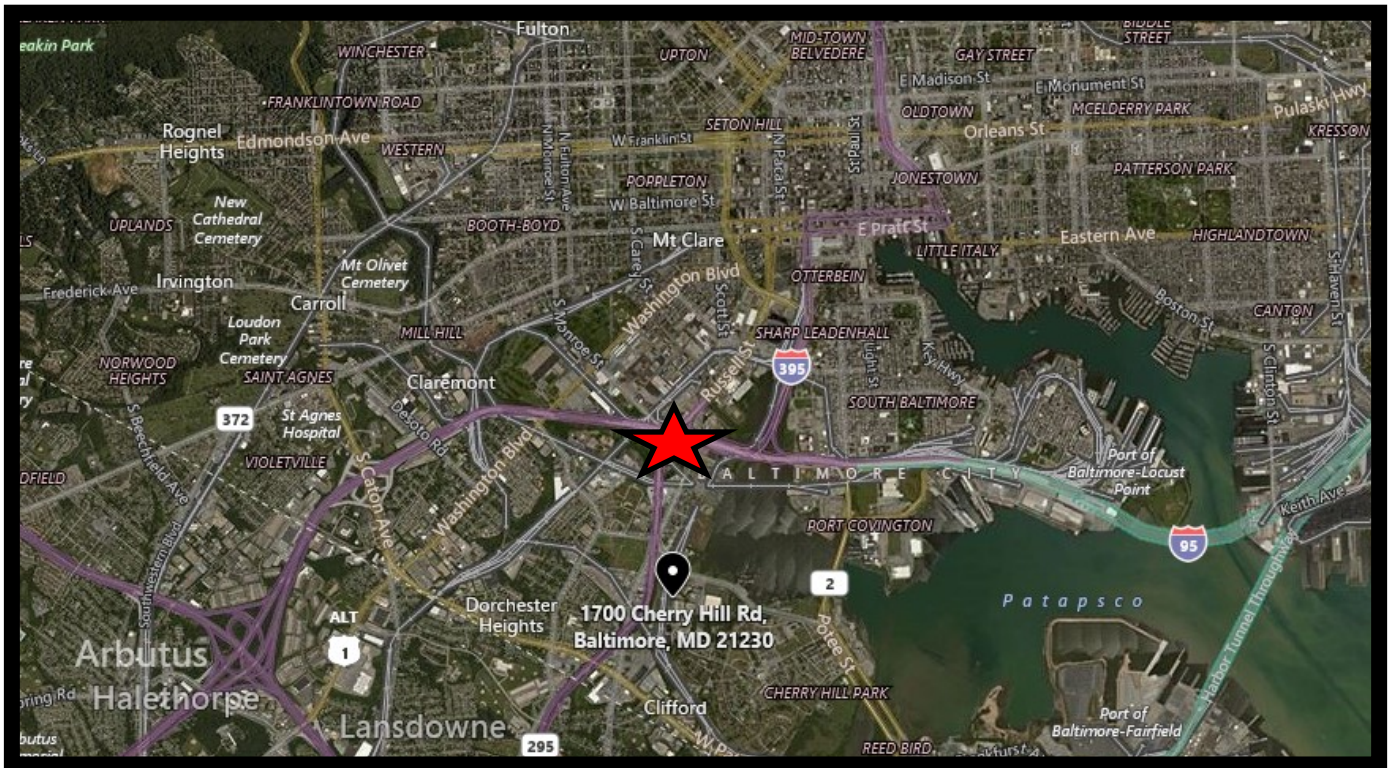


Gold And Company

Commercial Real Estate in the Baltimore Metropolitan Area

1700 Cherry Hill Rd. and 2520 Erick St. Baltimore, MD 21230

MAP



Jim Chivers / Mitch Gold / Gary Glover
Gold And Company, LLC
5601 Newbury St.
Baltimore, MD 21209

410.578.1300 (Office)
410.578.0200 (Fax)
www.goldcommercial.net