



# **GOLD AND COMPANY, LLC**



**2201 Elmira St. Baltimore, MD 21230**

## **Gold And Company, LLC**

**5601 Newbury St.  
Baltimore, MD 21209**

**Jim Chivers / Mitch Gold  
Gary Glover  
Office: 410.578.1300  
Fax: 410.578.0200  
www.goldcommercial.net**

- **Industrial Building Available FOR SALE**
- **21,000 SF**
- **Drive-In Loading**
- **Ceiling—14' - 18'**
- **Heavy Industrial Zoning (M-3)**
- **Southwest Baltimore Industrial Market**
- **Close Proximity to I-95 Interchange**
- **Call For More Information**

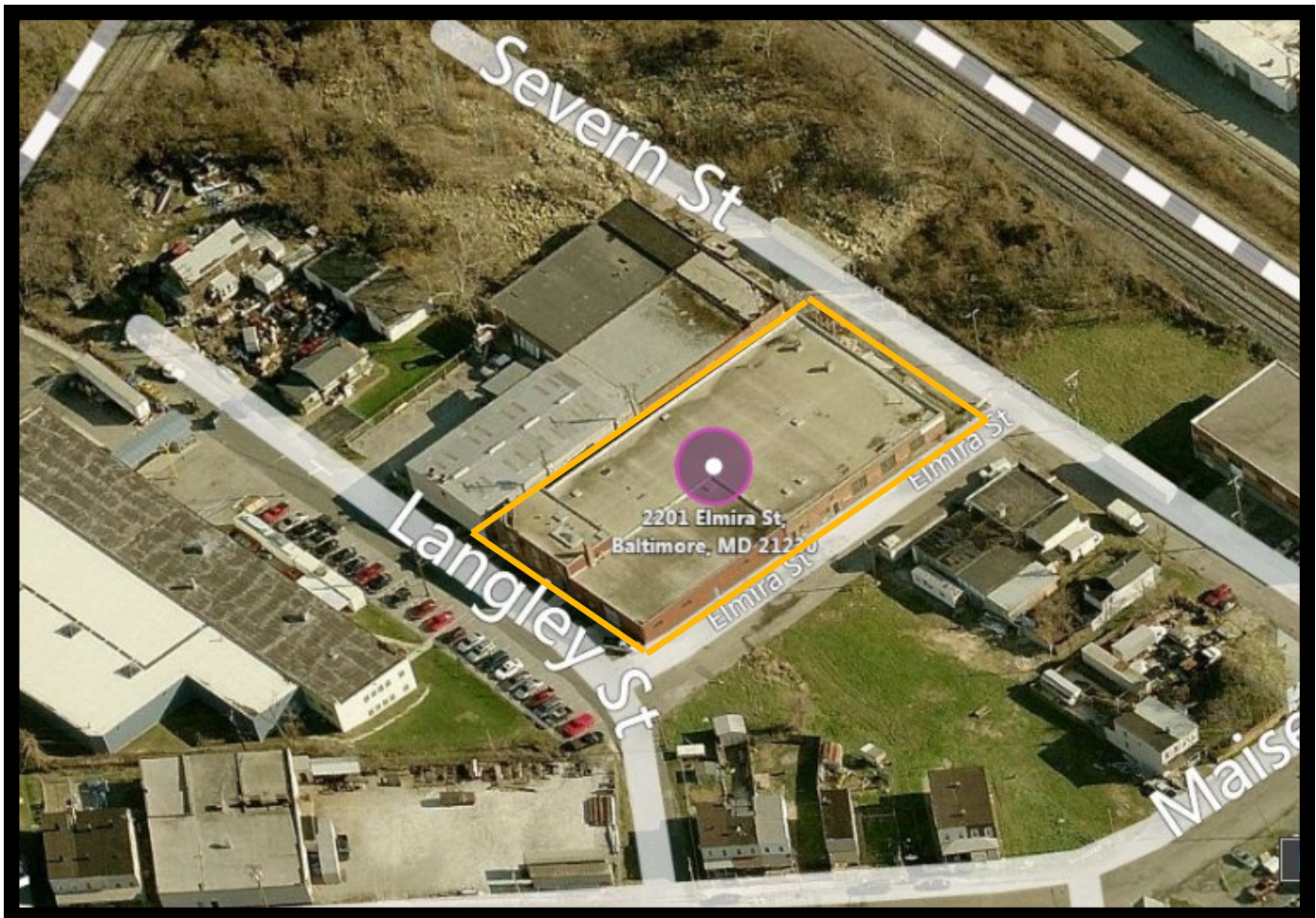


# Gold And Company

*Commercial Real Estate in the Baltimore Metropolitan Area*

**2201 Elmira St. Baltimore, MD 21230**

## **BIRDS EYE VIEW**



**Jim Chivers / Mitch Gold / Gary Glover**  
**Gold And Company, LLC**  
**5601 Newbury St.**  
**Baltimore, MD 21209**

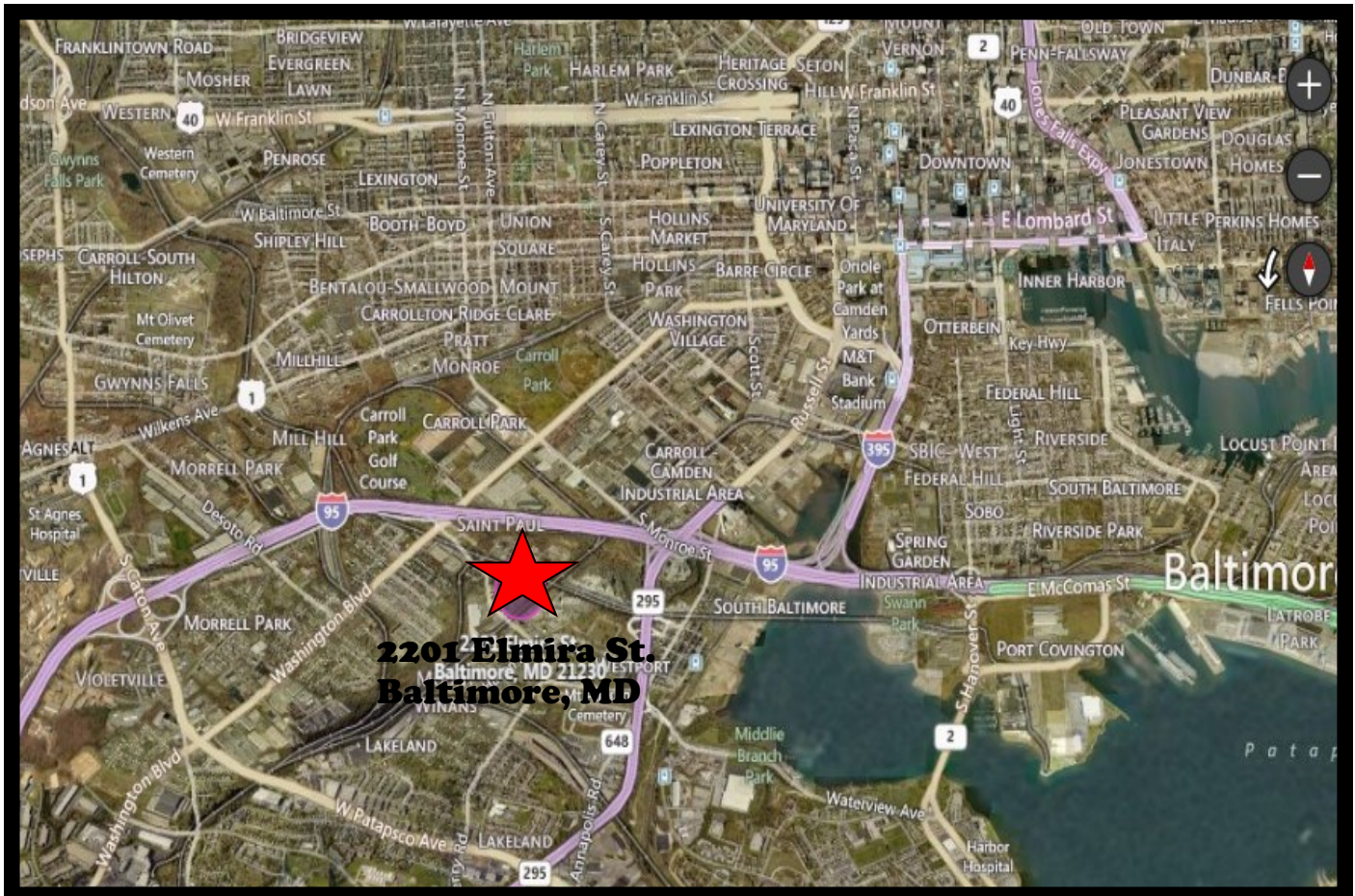
**410.578.1300 (Office)**  
**410.578.0200 (Fax)**  
**[www.goldcommercial.net](http://www.goldcommercial.net)**



# Gold And Company

*Commercial Real Estate in the Baltimore Metropolitan Area*

**2201 Elmira St. Baltimore, MD 21230**



**Jim Chivers / Mitch Gold / Gary Glover**  
**Gold And Company, LLC**  
**5601 Newbury St.**  
**Baltimore, MD 21209**

**410.578.1300 (Office)**  
**410.578.0200 (Fax)**  
**[www.goldcommercial.net](http://www.goldcommercial.net)**

This property offering is subject to change without notice. All information is deemed reliable but not guaranteed.