



Gold And Company

Commercial Real Estate in the Baltimore Metropolitan Area

1940 Chesapeake Ave.

Baltimore, MD 21226

+/- 5.5 Acres - 47,500 sf - M-3 Zoning



Mitch Gold / Jim Chivers

Gold And Company, LLC

5601 Newbury St.

410.578.1300 (Office)

410.578.0200 (Fax)

www.goldcommercial.net



Gold And Company

Commercial Real Estate in the Baltimore Metropolitan Area

1940 Chesapeake Ave.

Baltimore, MD 21226



Mitch Gold / Jim Chivers

Gold And Company, LLC

5601 Newbury St.

410.578.1300 (Office)

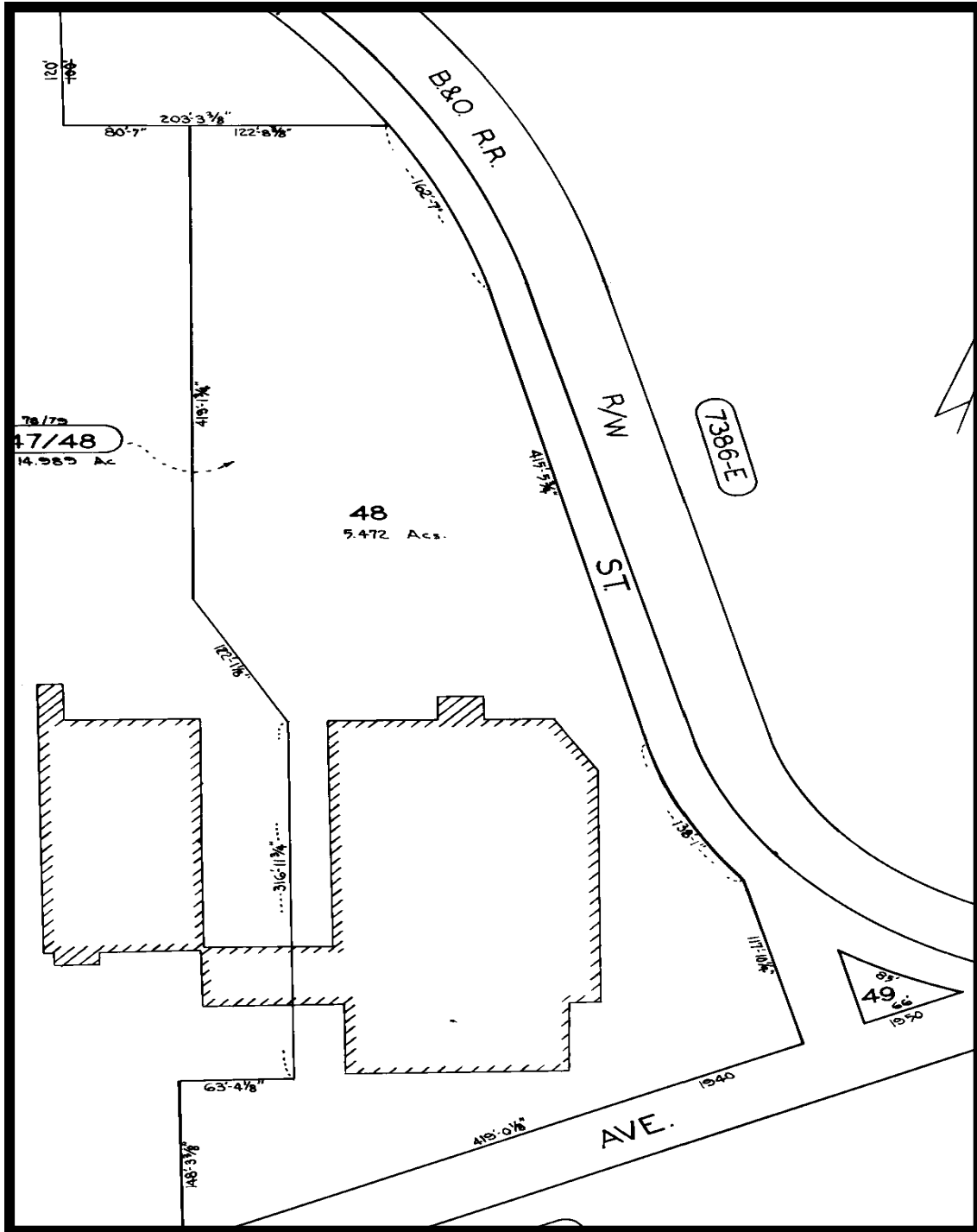
410.578.0200 (Fax)

www.goldcommercial.net



Gold And Company

Commercial Real Estate in the Baltimore Metropolitan Area



Mitch Gold / Jim Chivers

Gold And Company, LLC

5601 Newbury St.

410.578.1300 (Office)

410.578.0200 (Fax)

www.goldcommercial.net