



GOLD AND COMPANY, LLC



1100 N Chester St. Baltimore, MD 21213

Gold And Company, LLC

**5601 Newbury St.
Baltimore, MD 21209**

410.578.1300 (Office)

**Jim Chivers
443.928.7522 (cell)
jim@goldcommercial.net**

**Mitch Gold
410.456.2492 (cell)
mitch@goldcommercial.net**

- **26,000 sf AVAILABLE**
- **Light Manufacturing / Flex / Lab Space**
- **Total Renovation—New Roof, Heat, AC, Flooring, Sprinklers, etc.**
- **Dock Loading**
- **Near Hopkins East Medical Campus**
- **Across from Hoen Lithgraph Renovation**
- **I-MU Zoning**
- **Call For More Information**

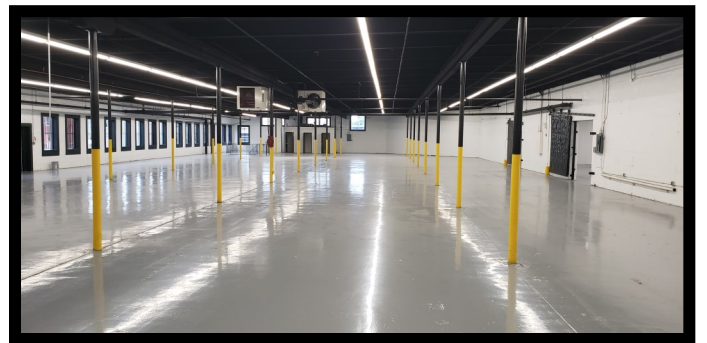
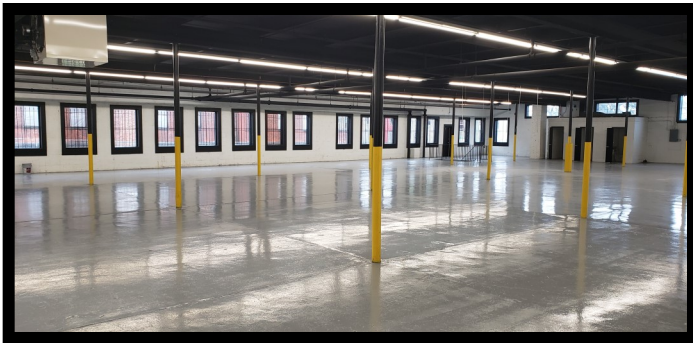
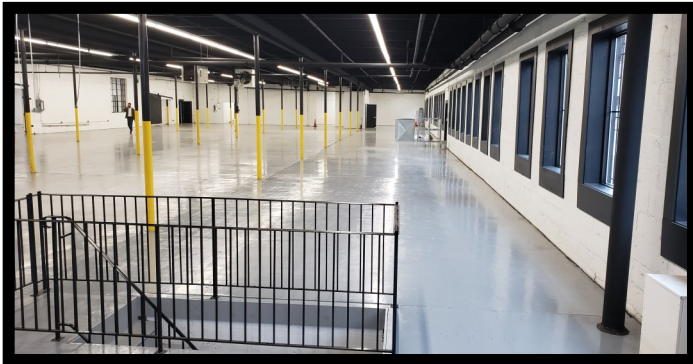


Gold And Company

Commercial Real Estate in the Baltimore Metropolitan Area

1100 N Chester St. Baltimore, MD 21213

Interior Pictures



**Jim Chivers / Mitch Gold
Gold And Company, LLC
5601 Newbury St.
Baltimore, MD 21209**

**410.578.1300 (Office)
www.goldcommercial.net**



Gold And Company

Commercial Real Estate in the Baltimore Metropolitan Area

1100 N Chester St. Baltimore, MD 21213

Building Layout



Jim Chivers / Mitch Gold
Gold And Company, LLC
5601 Newbury St.
Baltimore, MD 21209

410.578.1300 (Office)
www.goldcommercial.net