



GOLD AND COMPANY, LLC

WWW.GOLDCOMMERCIAL.NET

Commercial Real Estate in the Baltimore Metropolitan Area



1100 N. Chester St. Baltimore, MD 21213

For More Information:

Jim Chivers
Sr. Vice President
Gold and Company, LLC
443.928.7522 cell
jim@goldcommercial.net

- **Fully Leased Industrial Building FOR SALE**
- **+/- 26,000 sf Warehouse**
- **I-MU Zoning (Industrial—Baltimore City)**
- **Recent Complete Renovation**
 - **Tenant: Bedtime in a Box**
 - **Non-Profit: 501(c)(3) organization**
 - **Website: <https://bedtimeinabox.org>**
 - **Lease: 5 Year Lease w/ Renewals**
- **Contact for More Lease Information and Financials**
- **Near Johns Hopkins Hospital and Hoen Lithograph Building**
- **Tenant Responsible for all Operating Expenses**
- **Call For More Information**

www.goldcommercial.net

This property offering is subject to change without notice. All information is deemed reliable but not guaranteed.

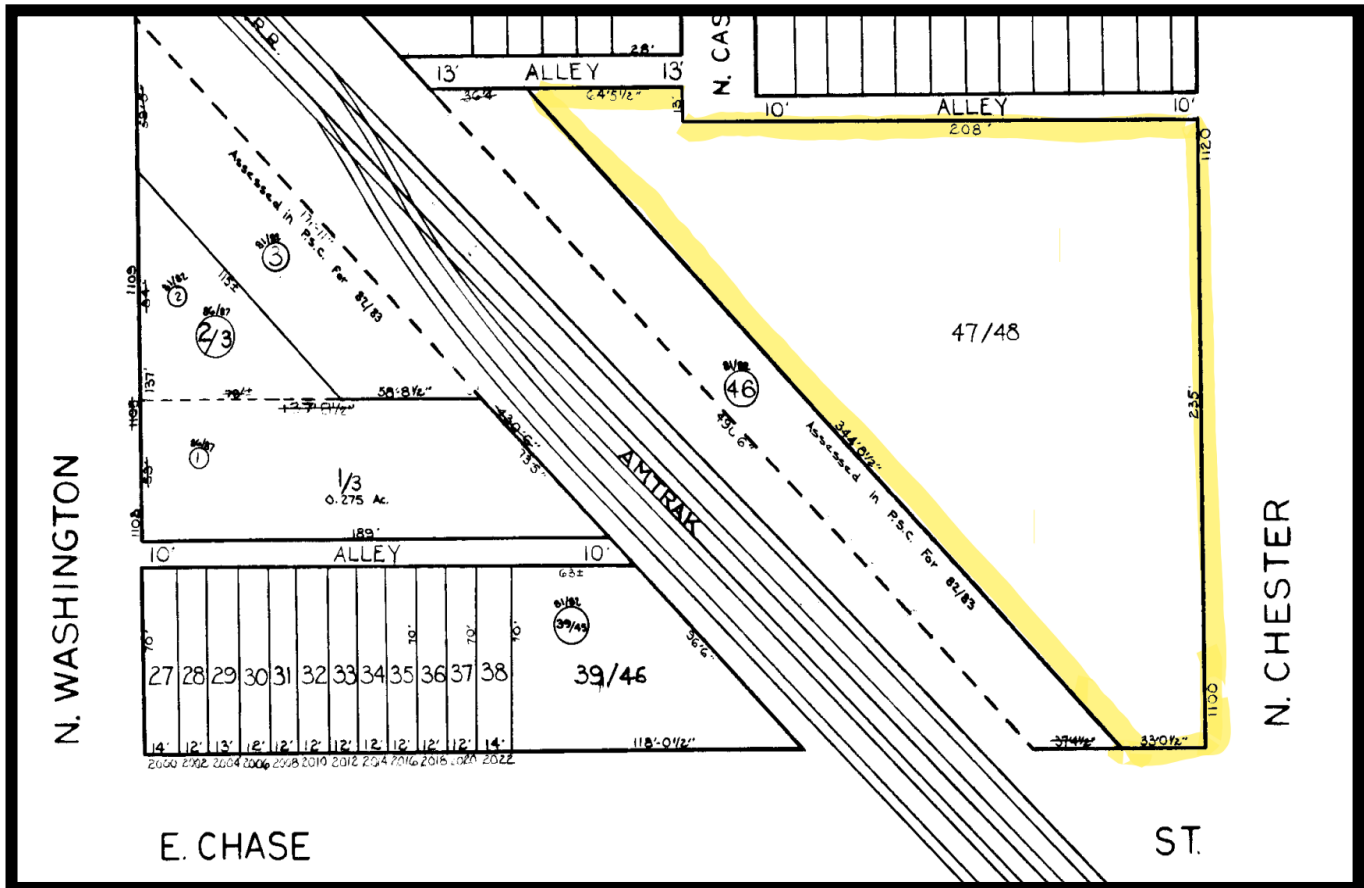


Gold And Company

Commercial Real Estate in the Baltimore Metropolitan Area

1100 N. Chester St. Baltimore, MD 21213

Block Map



Jim Chivers
Gold And Company, LLC
5601 Newbury St.
Baltimore, MD 21209

410.578.1300 (Office)
www.goldcommercial.net



Gold And Company

Commercial Real Estate in the Baltimore Metropolitan Area

1100 N. Chester St. Baltimore, MD 21213

Additional Pictures



Gold And Company, LLC
5601 Newbury St.
Baltimore, MD 21209

410.578.1300 (Office)
www.goldcommercial.net