



GOLD AND COMPANY, LLC



2950 Loch Raven Rd., Baltimore, MD 21218

Gold And Company, LLC

**5601 Newbury St.
Baltimore, MD 21209**

**Jim Chivers
Cell 443.928.7522
jim@goldcommercial.net**

**Gary Glover
Cell 443.629.2133
gary@goldcommercial.net**

**Office: 410.578.1300
www.goldcommercial.net**

- **Single Story Flex Building FOR SALE**
- **+/- 8,275 Total sf**
- **I-1 Zoning—Industrial / Baltimore City**
- **+/- 14' Clear Height**
- **Sprinklered**
- **Interior Loading Dock Platform**
- **3 Phase / Heavy Power**
- **Easy Access to Baltimore City and County**
- **+/- 10 Off-Street Parking Spaces**
- **Call For More Information**

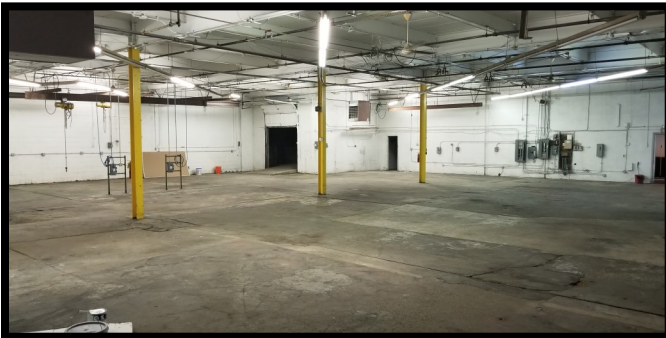


Gold And Company

Commercial Real Estate in the Baltimore Metropolitan Area

2950 Loch Raven Rd., Baltimore, MD 21218

Interior Pictures



Jim Chivers / Mitch Gold / Gary Glover
Gold And Company, LLC
5601 Newbury St.
Baltimore, MD 21209

410.578.1300 (Office)

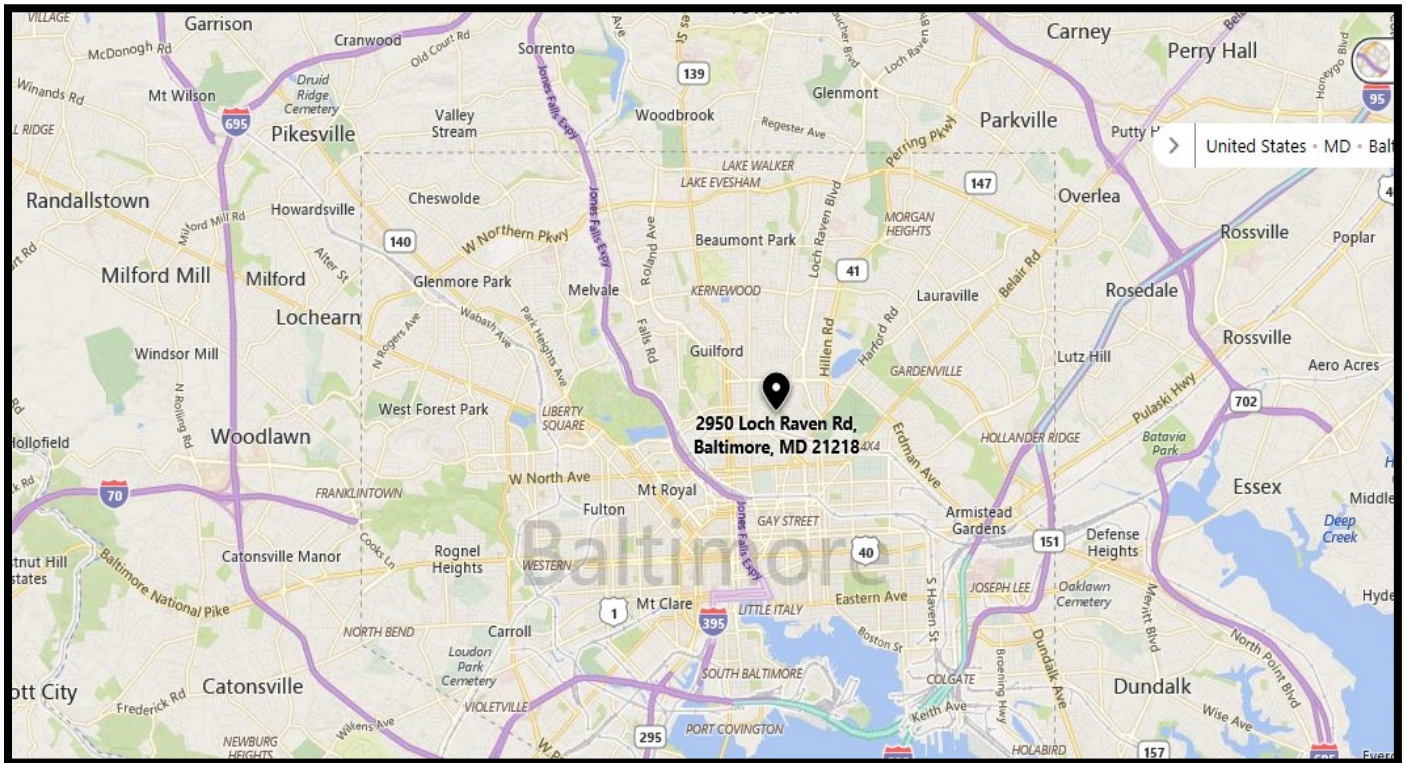
www.goldcommercial.net



Gold And Company

Commercial Real Estate in the Baltimore Metropolitan Area

MAP



Jim Chivers / Mitch Gold / Gary Glover
Gold And Company, LLC
5601 Newbury St.
Baltimore, MD 21209

410.578.1300 (Office)
410.578.0200 (Fax)
www.goldcommercial.net

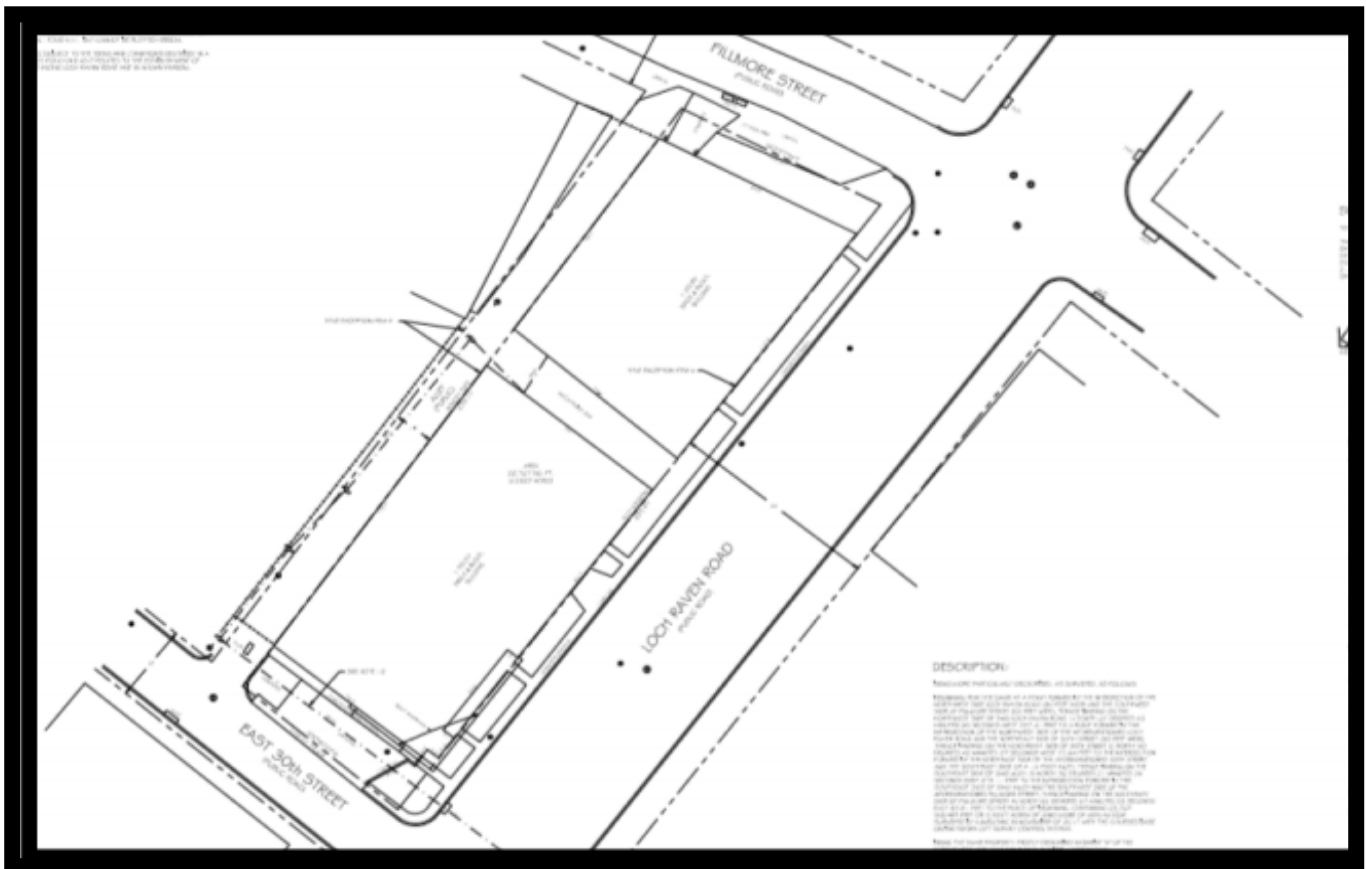


Gold And Company

Commercial Real Estate in the Baltimore Metropolitan Area

2950 Loch Raven Rd., Baltimore, MD 21218

SURVEY



Jim Chivers / Mitch Gold / Gary Glover
Gold And Company, LLC
5601 Newbury St.
Baltimore, MD 21209

410.578.1300 (Office)
410.578.0200 (Fax)
www.goldcommercial.net