



# **GOLD AND COMPANY, LLC**



**2900 Loch Raven Rd., Baltimore, MD 21218**

## **Gold And Company, LLC**

**5601 Newbury St.  
Baltimore, MD 21209**

**Jim Chivers  
Cell 443.928.7522  
jim@goldcommercial.net**

**Gary Glover  
Cell 443.629.2133  
gary@goldcommercial.net**

**Office: 410.578.1300  
www.goldcommercial.net**

- **Single Story Flex Building FOR SALE**
- **+/- 10,725 Total sf**
- **I-1 Zoning—Industrial / Baltimore City**
- **+/- 16-18' Clear Height**
- **Sprinklered**
- **Drive-In Door—14'x10'**
- **3 Phase / Heavy Power**
- **+/- 10 Off-Street Parking Spaces**
- **Call For More Information**

This property offering is subject to change without notice. All information is deemed reliable but not guaranteed.

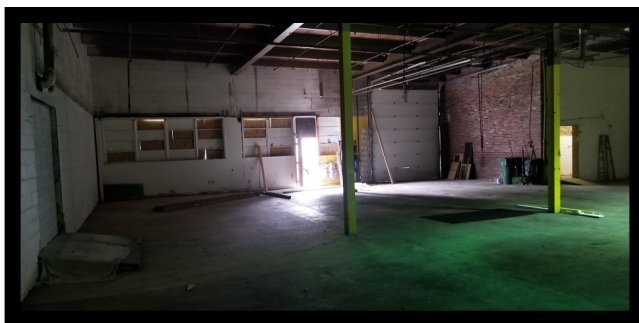
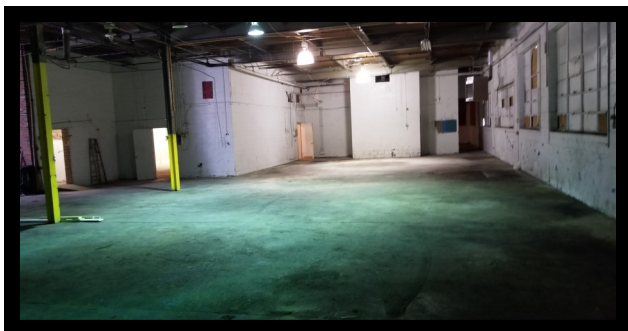


# Gold And Company

*Commercial Real Estate in the Baltimore Metropolitan Area*

**2900 Loch Raven Rd., Baltimore, MD 21218**

## Interior Pictures



**Jim Chivers / Mitch Gold / Gary Glover**  
**Gold And Company, LLC**  
**5601 Newbury St.**  
**Baltimore, MD 21209**

**410.578.1300 (Office)**

**[www.goldcommercial.net](http://www.goldcommercial.net)**



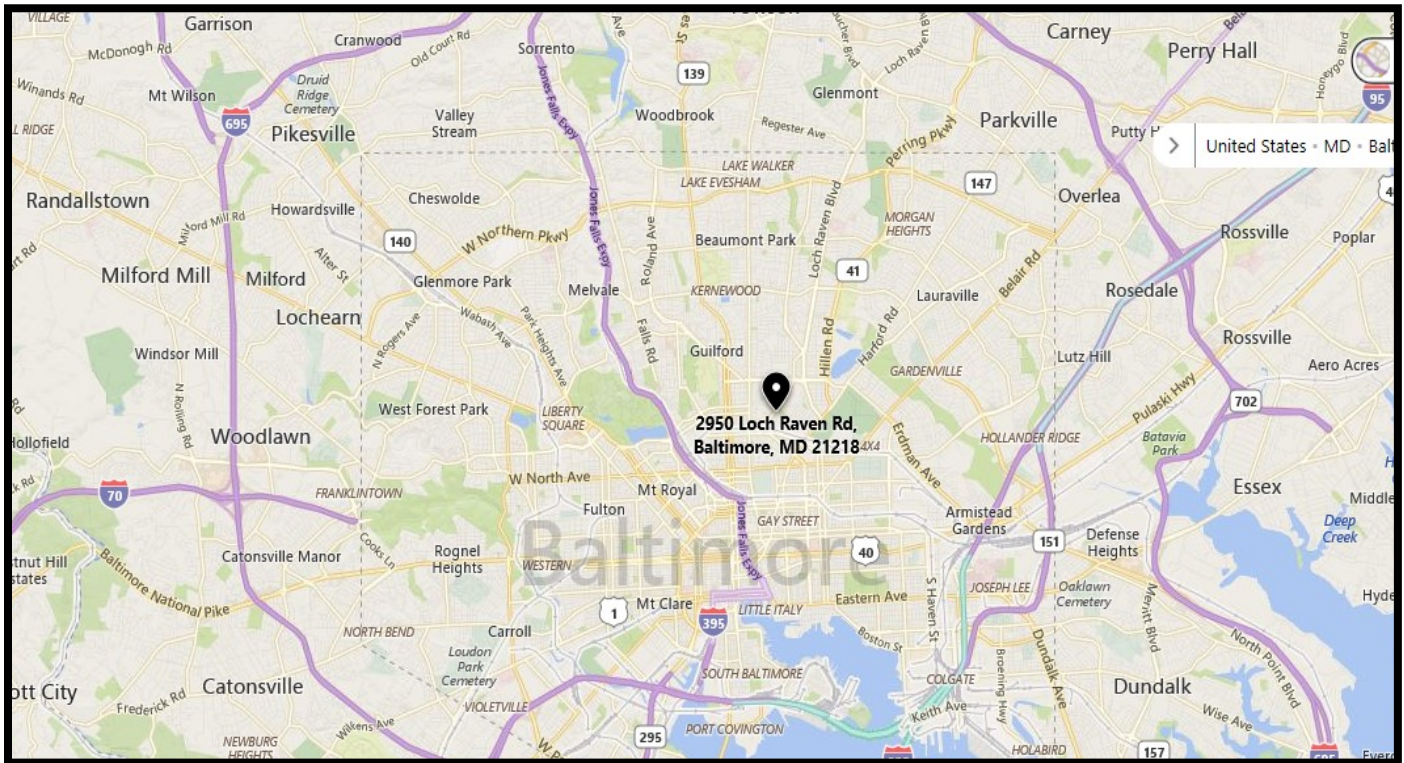


# Gold And Company

***Commercial Real Estate in the Baltimore Metropolitan Area***

**2900 Loch Raven Rd., Baltimore, MD 21218**

## MAP



**Jim Chivers / Mitch Gold / Gary Glover**  
**Gold And Company, LLC**  
**5601 Newbury St.**  
**Baltimore, MD 21209**

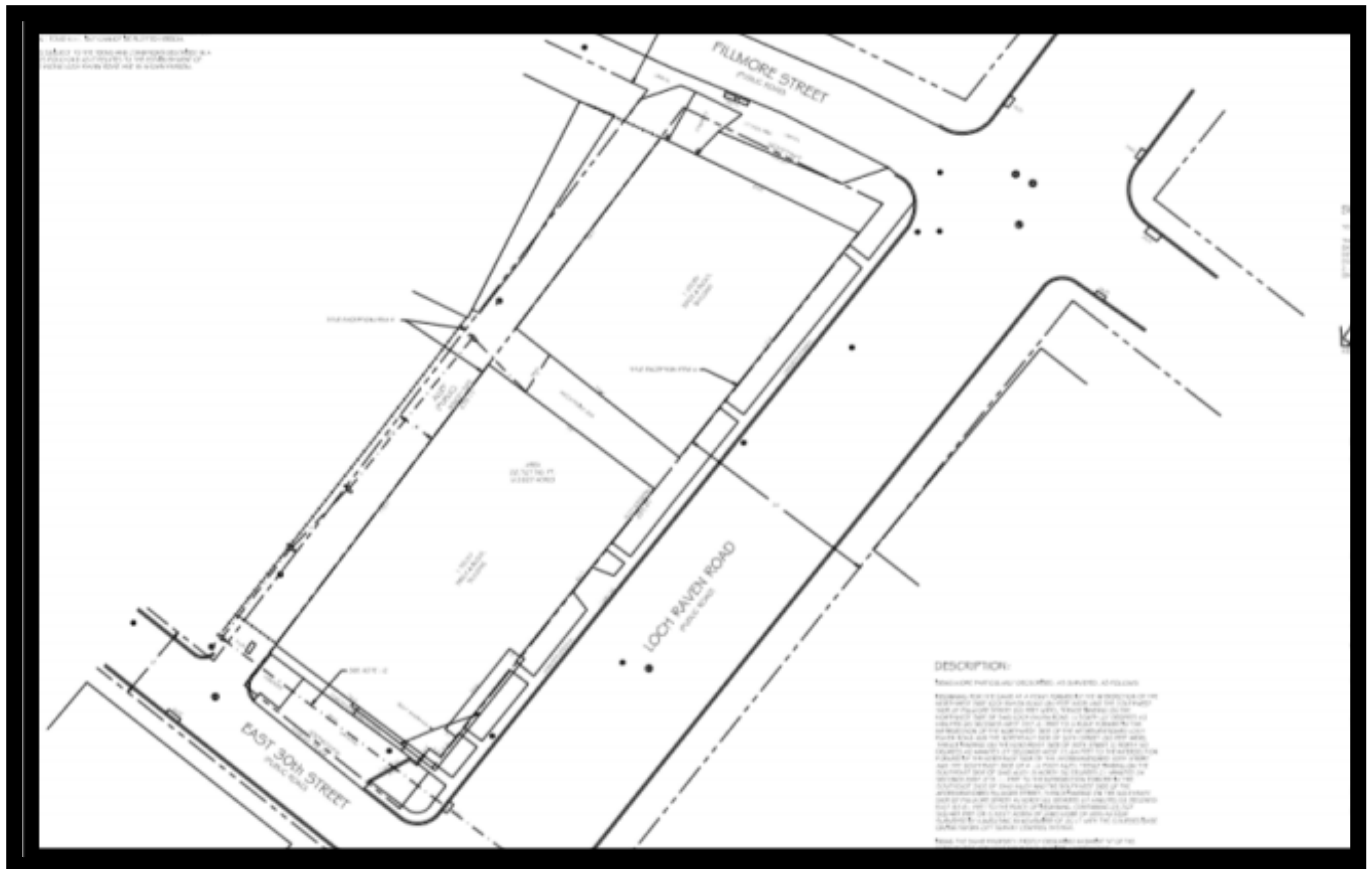
**410.578.1300 (Office)**  
**410.578.0200 (Fax)**  
**[www.goldcommercial.net](http://www.goldcommercial.net)**



# Gold And Company

*Commercial Real Estate in the Baltimore Metropolitan Area*

**2900 Loch Raven Rd., Baltimore, MD 21218**



**Jim Chivers / Mitch Gold / Gary Glover**  
**Gold And Company, LLC**  
**5601 Newbury St.**  
**Baltimore, MD 21209**

**410.578.1300 (Office)**  
**410.578.0200 (Fax)**  
**[www.goldcommercial.net](http://www.goldcommercial.net)**