



GOLD AND COMPANY, LLC



240 & 250 S. Kresson St., Baltimore, MD 21224

Gold And Company, LLC

5601 Newbury St.
Baltimore, MD 21209

Jim Chivers / Mitch Gold
Gary Glover

Office: 410.578.1300

Fax: 410.578.0200

www.goldcommercial.net

- **INDUSTRIAL PROPERTY FOR SALE**
- **240 S. Kresson St.**
 - +/- 15,000 sf Cross Dock Warehouse
 - 2.19 Acres
- **250 S. Kresson St.**
 - +/- 13,000 sf Cross Dock with Offices
 - +/- 2,000 sf Steel Canopy
 - 1.87 Acres
- **28,000 Total sf**
- **4.06 Total Acres**
- **I-2 Zoning (Industrial)**
- **Enterprise and Hub Zone Status**
- **Alternative exit on Janney St.**
- **Call for More Information**

This property offering is subject to change without notice. All information is deemed reliable but not guaranteed.



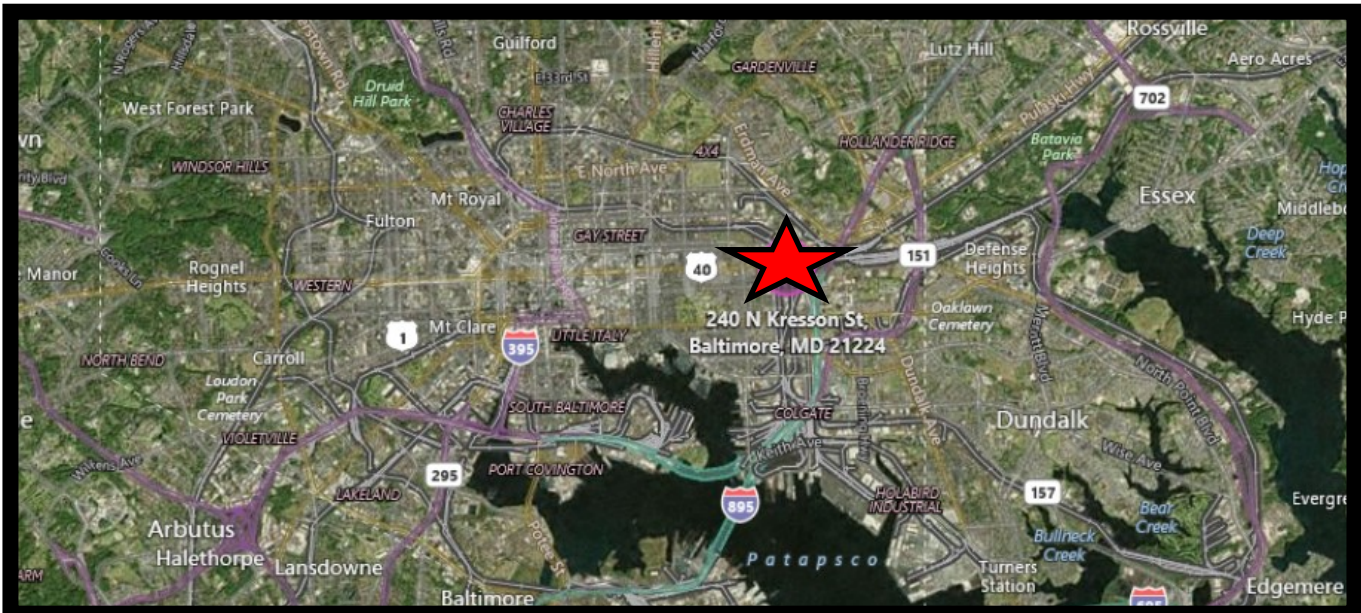
Gold And Company

Commercial Real Estate in the Baltimore Metropolitan Area

Map / Aerial



- **1 Block From Lombard St. (Traffic Signal)**
- **2 Blocks from I-895 & 895 North Interchange**
- **2.2 Miles from I-95 S Interchange**
- **10 Minutes from Seagirt and Dundalk Marine Terminals**



Jim Chivers / Mitch Gold / Gary Glover
Gold And Company, LLC
5601 Newbury St.
Baltimore, MD 21209

410.578.1300 (Office)
410.578.0200 (Fax)
www.goldcommercial.net

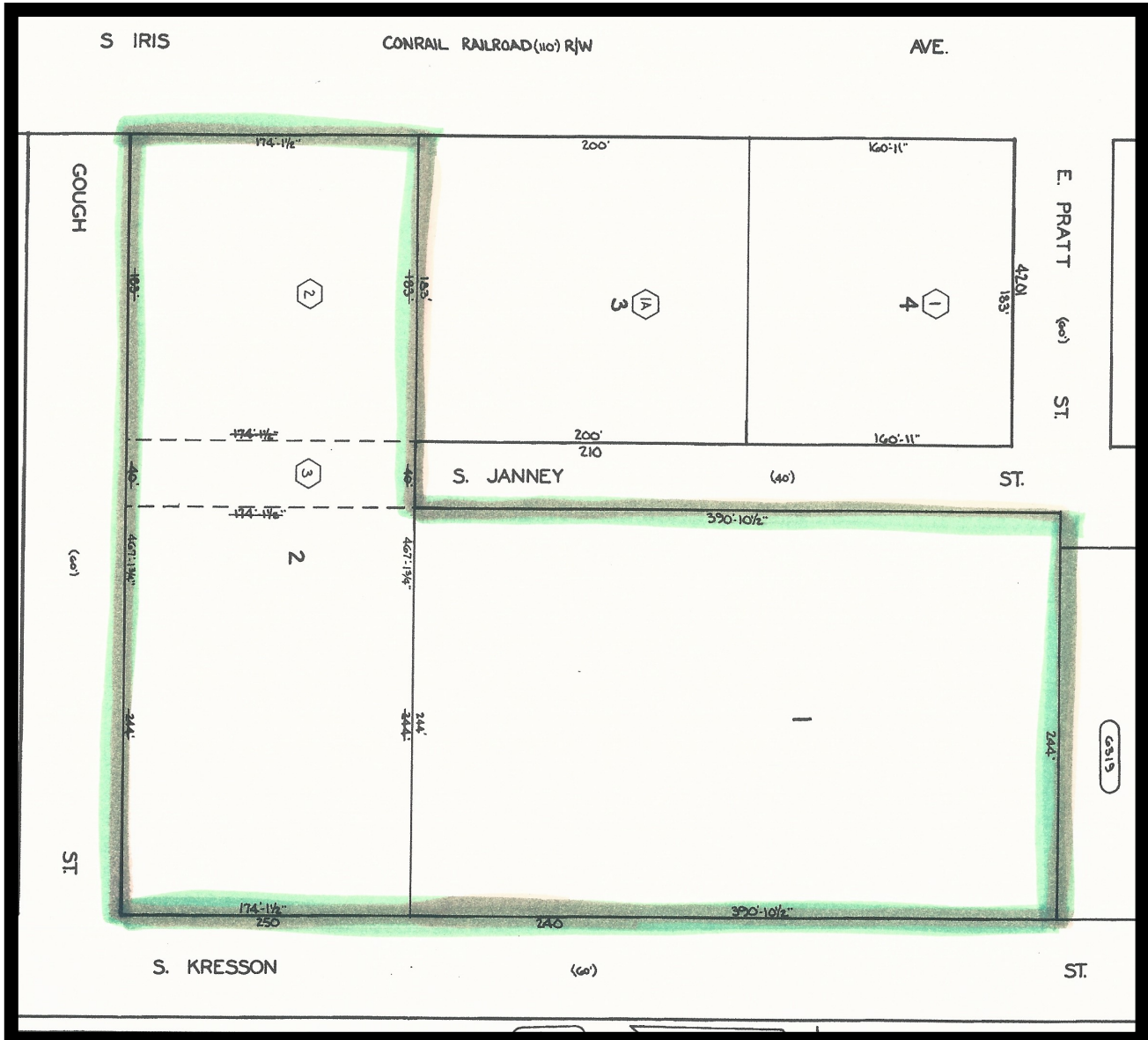


Gold And Company

Commercial Real Estate in the Baltimore Metropolitan Area

240 & 250 S. Kresson St., Baltimore, MD 21224

Block Map



Jim Chivers / Mitch Gold / Gary Glover
Gold And Company, LLC
5601 Newbury St.
Baltimore, MD 21209

410.578.1300 (Office)
410.578.0200 (Fax)
www.goldcommercial.net