



GOLD AND COMPANY, LLC



1742—1746 Fleet St. Baltimore, MD 21231

Gold And Company, LLC

**5601 Newbury St.
Baltimore, MD 21209**

Jim Chivers

Cell: 443.928.7522

jim@goldcommercial.net

Office: 410.578.1300

www.goldcommercial.net

- **Fells Point Redevelopment Opportunity**
- **3 Parcels**
- **53' Frontage on Fleet St.**
- **+/- 10,000 sf Total Buildings**
- **C-1 Zoning**
- **Near Harbor East / Broadway Market /
Fells Pt., and New Development**
- **CHAP District**
- **Call For More Information**

This property offering is subject to change without notice. All information is deemed reliable but not guaranteed.

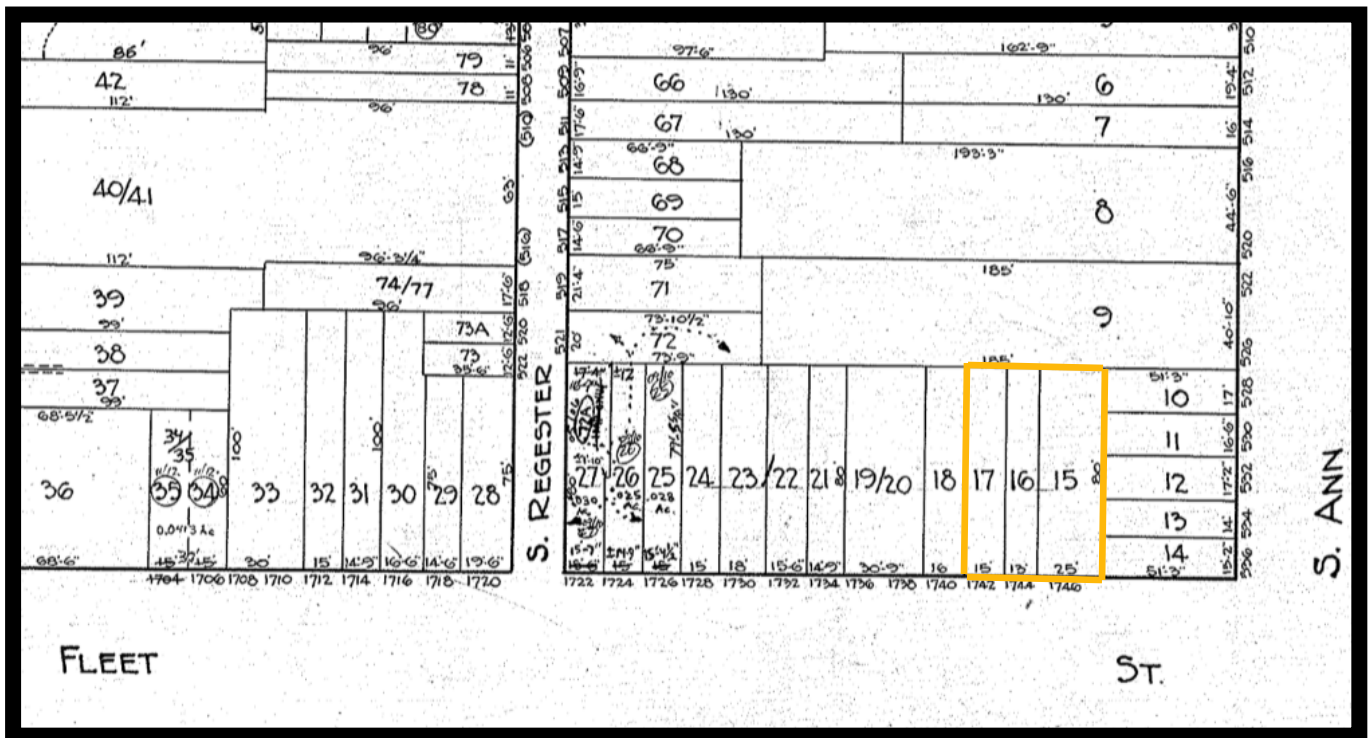


Gold And Company

Commercial Real Estate in the Baltimore Metropolitan Area

1742—1746 Fleet St. Baltimore, MD 21231

Block Map



Jim Chivers
Gold And Company, LLC
5601 Newbury St.
Baltimore, MD 21209

410.578.1300 (Office)
410.578.0200 (Fax)
www.goldcommercial.net

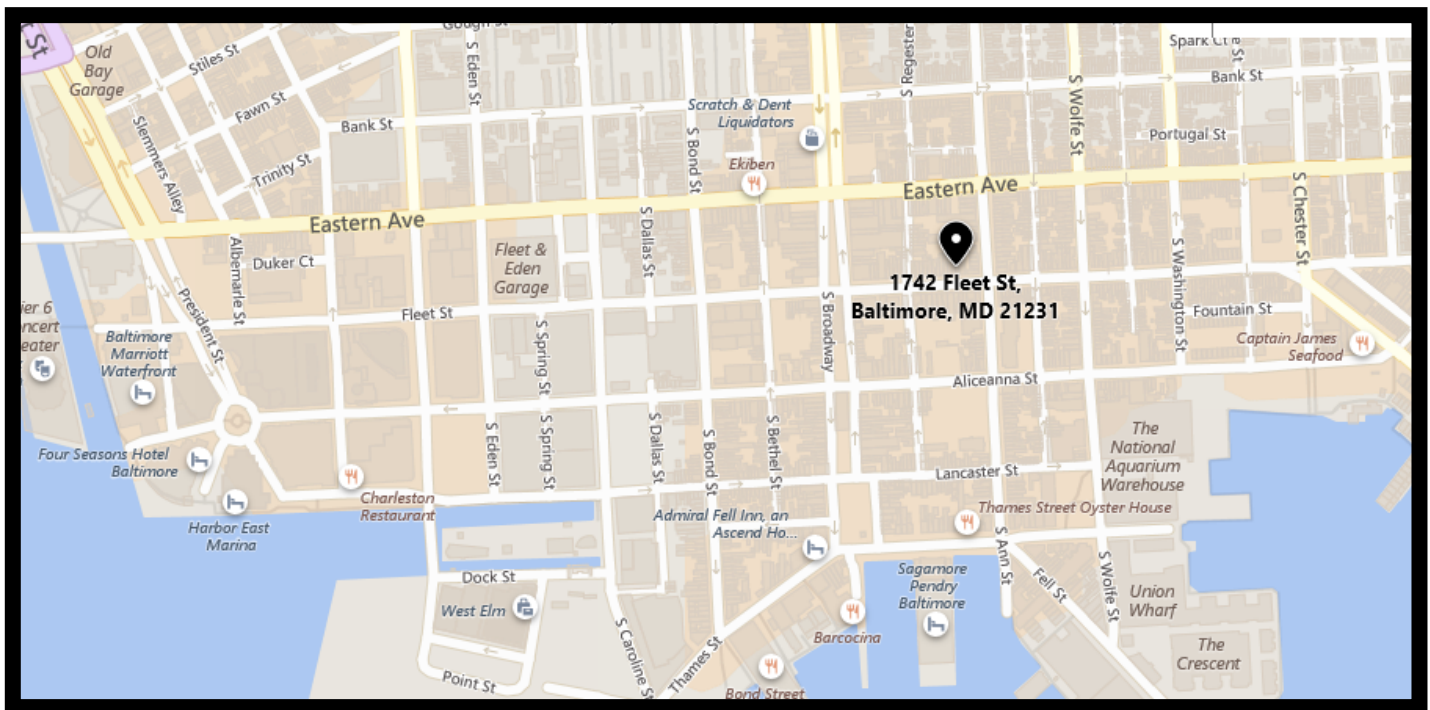


Gold And Company

Commercial Real Estate in the Baltimore Metropolitan Area

1742—1746 Fleet St. Baltimore, MD 21231

MAP



Jim Chivers
Gold And Company, LLC
5601 Newbury St.
Baltimore, MD 21209

410.578.1300 (Office)
410.578.0200 (Fax)
www.goldcommercial.net