



GOLD AND COMPANY, LLC



828 N. North Point Rd. Baltimore, MD 21237

Gold And Company, LLC

**5601 Newbury St.
Baltimore, MD 21209**

**Jim Chivers
443.928.7522 cell
jim@goldcommercial.net
www.goldcommercial.net**

- **37,000 SF Warehouse Available For Lease**
- **9 Dock Doors**
- **2 Oversized Drive-In Ramp Doors**
- **20' Clear Height Front Building (7,000 sf)**
- **30' Clear Height Back Building (30,000)**
- **800 Amps / 3 Phase Power—Gas Served**
- **New Construction**
- **East Baltimore Submarket—Access to all Interstates**
- **Call For More Information**

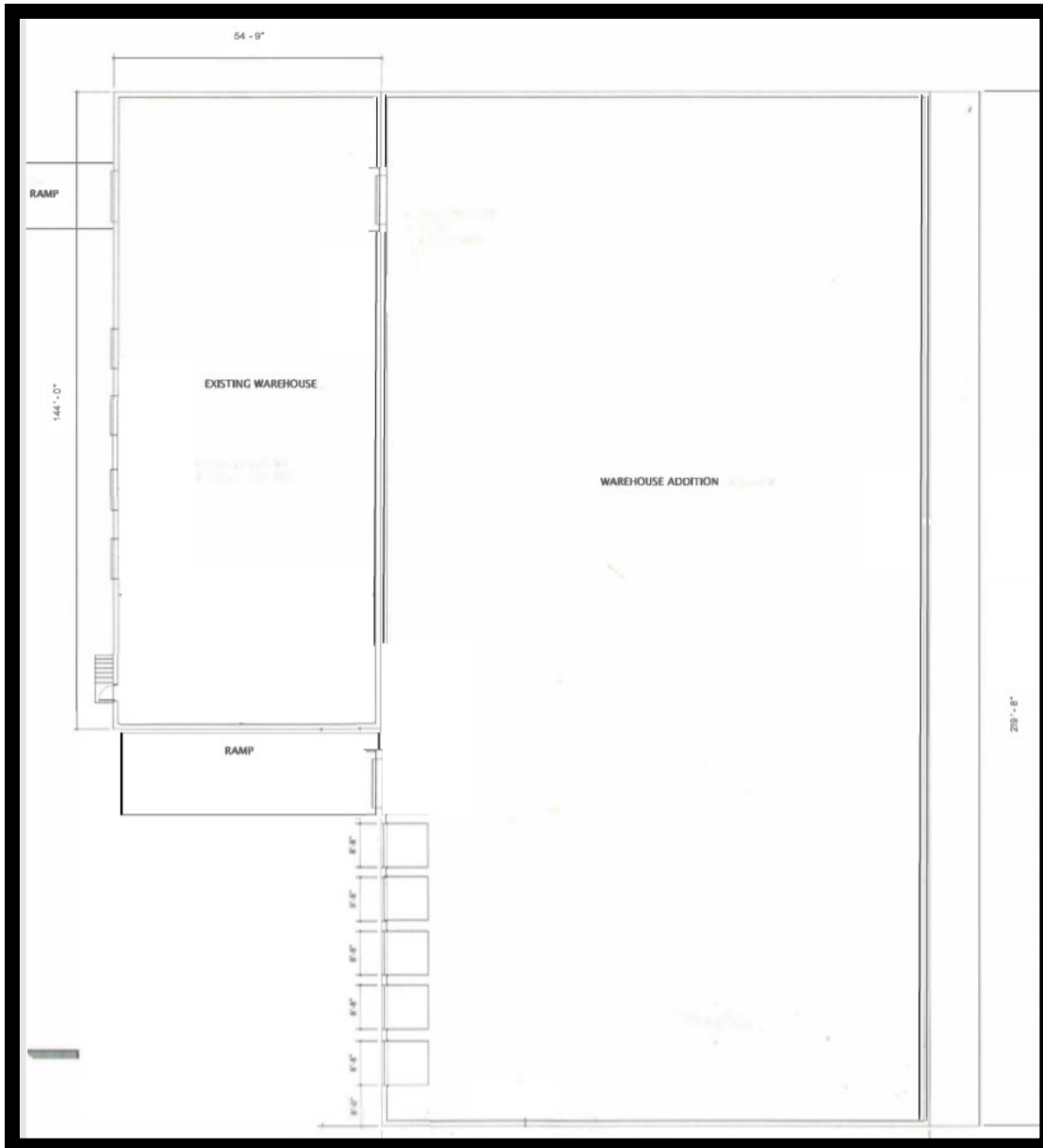


Gold And Company

Commercial Real Estate in the Baltimore Metropolitan Area

828 N. North Point Rd. Baltimore, MD 21237

Building Sketch



Jim Chivers / Mitch Gold
Gold And Company, LLC
5601 Newbury St.
Baltimore, MD 21209

410.578.1300 (Office)

www.goldcommercial.net



Gold And Company

Commercial Real Estate in the Baltimore Metropolitan Area

Interior Pictures



Jim Chivers / Mitch Gold
Gold And Company, LLC
5601 Newbury St.
Baltimore, MD 21209

410.578.1300 (Office)

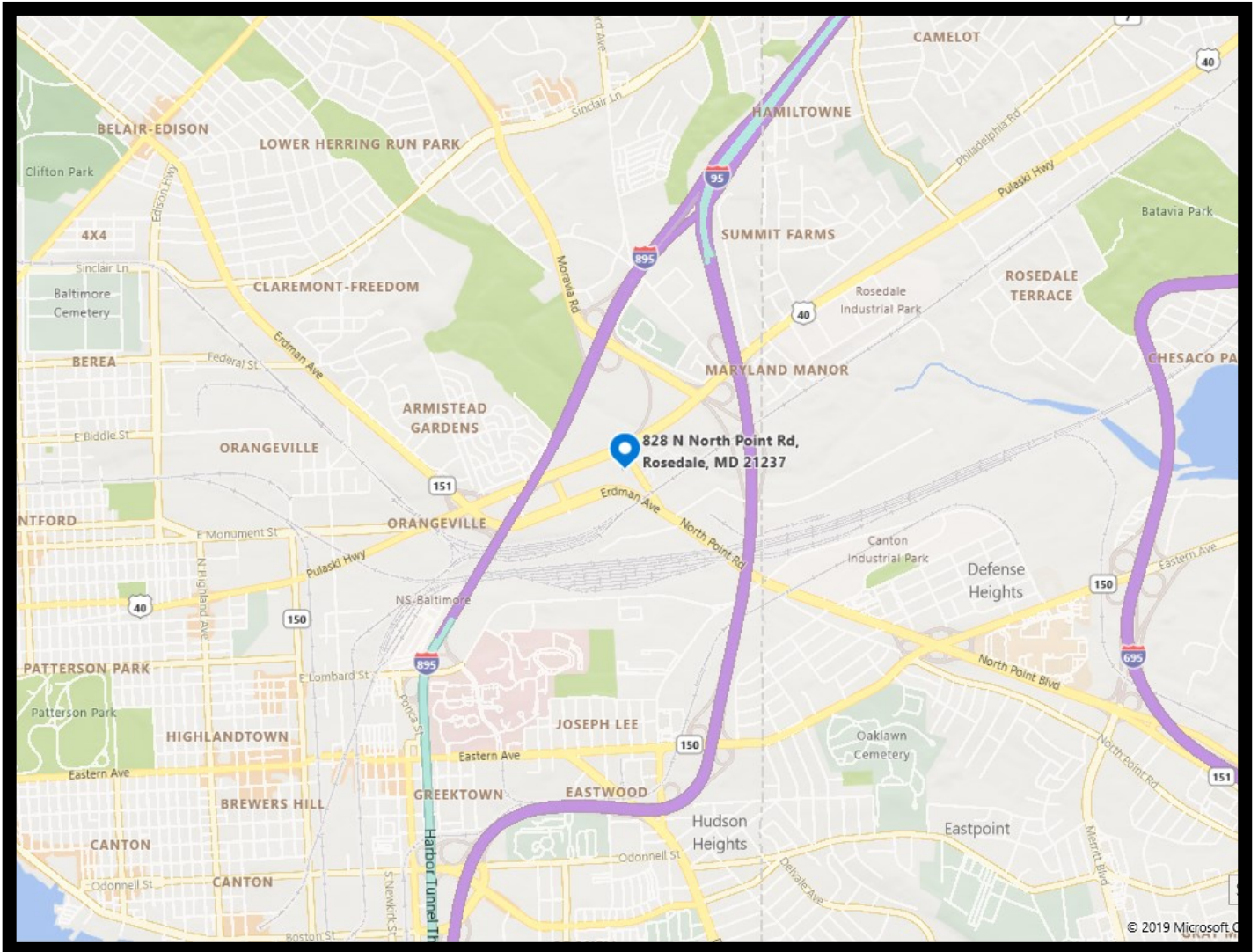
www.goldcommercial.net



Gold And Company

Commercial Real Estate in the Baltimore Metropolitan Area

Map



Jim Chivers / Mitch Gold
Gold And Company, LLC
5601 Newbury St.
Baltimore, MD 21209

410.578.1300 (Office)

www.goldcommercial.net