



# **GOLD AND COMPANY, LLC**



**4300 E. Monument St. Baltimore, MD 21205**

## **Gold And Company, LLC**

**5601 Newbury St.  
Baltimore, MD 21209**

**410.578.1300 Office**

**Jim Chivers  
443.928.7522 (cell)  
jim@goldcommercial.net**

**Mitch Gold  
410.456.2492 (cell)  
mitch@goldcommercial.net**

- **+/- 25,000 sf Industrial Building**
- **FOR SALE**
- **East Baltimore City Location**
- **Located in Enterprise Zone**
- **3 Loading Dock Doors**
- **+/- 1,000 sf Office Space**
- **I-2 Zoning (Heavy Industrial)**
- **Recently Renovated**
- **Call For More Information**

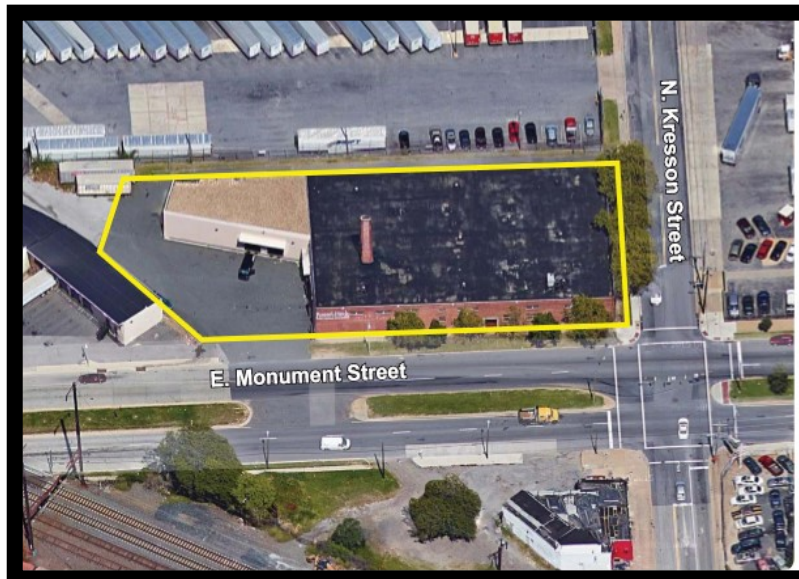
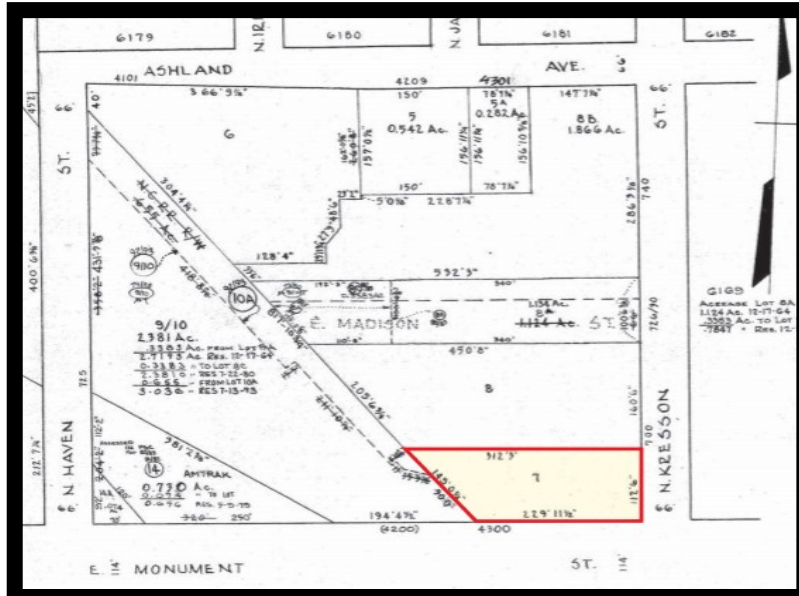


# Gold And Company

*Commercial Real Estate in the Baltimore Metropolitan Area*

**4300 E. Monument St. Baltimore, MD 21205**

## Block Map and Aerial



**Jim Chivers / Mitch Gold**  
**Gold And Company, LLC**  
**5601 Newbury St.**  
**Baltimore, MD 21209**

**410.578.1300 (Office)**  
**[www.goldcommercial.net](http://www.goldcommercial.net)**

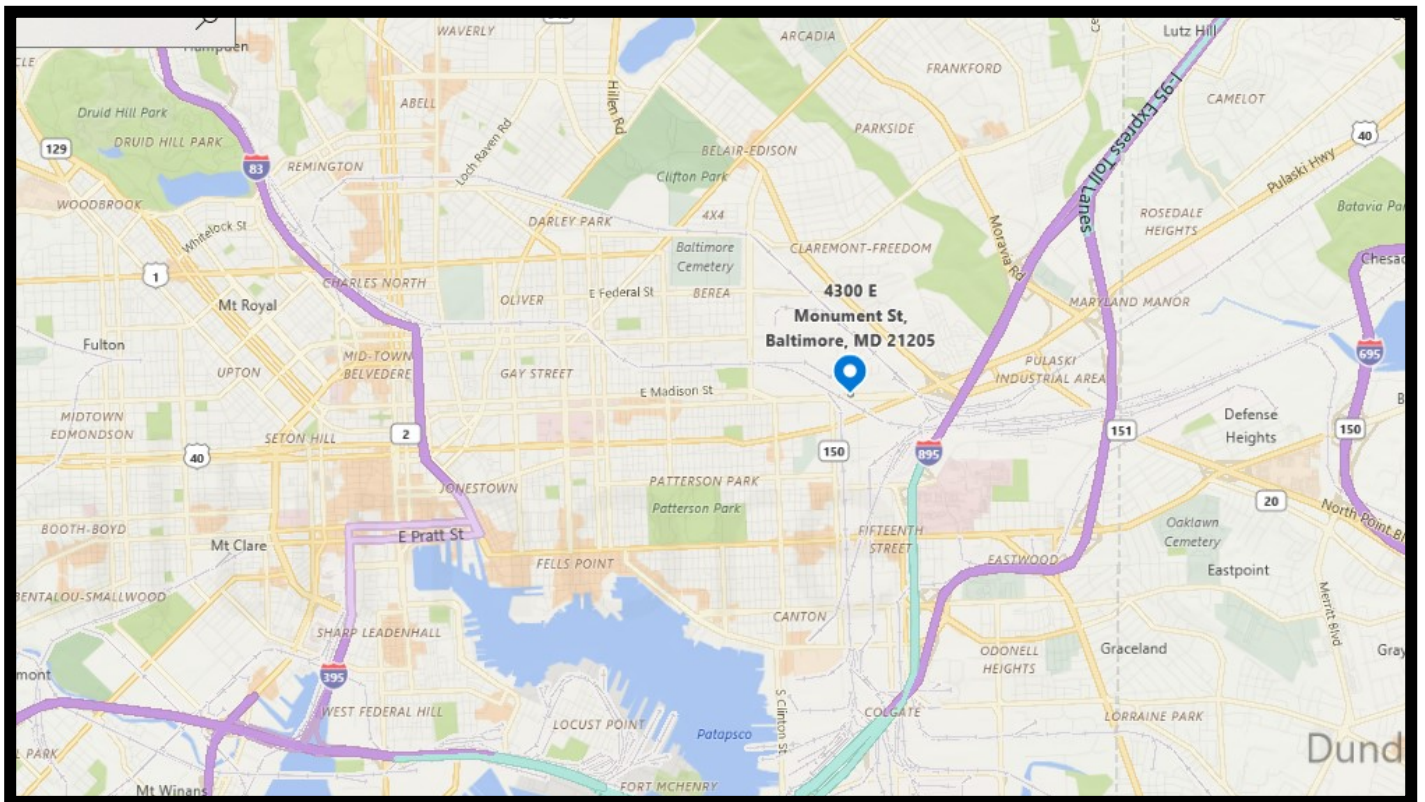


# Gold And Company

*Commercial Real Estate in the Baltimore Metropolitan Area*

**4300 E. Monument St. Baltimore, MD 21205**

## MAP



**Jim Chivers / Mitch Gold**  
**Gold And Company, LLC**  
**5601 Newbury St.**  
**Baltimore, MD 21209**

**410.578.1300 (Office)**  
**[www.goldcommercial.net](http://www.goldcommercial.net)**