



GOLD AND COMPANY, LLC



1200 N. Macon St. Baltimore, MD 21205

Gold And Company, LLC

**5601 Newbury St.
Baltimore, MD 21209**

**Jim Chivers
Gary Glover**

Office: 410.578.1300

Fax: 410.578.0200

www.goldcommercial.net

- **Industrial / Warehouse Building Available**
- **+/- 8,000 sf**
- **East Baltimore Sub-market**
- **M-3 Zoning**
- **Loading Docks and Drive-In**
- **Visibility from Erdman Ave.**
- **Heavy Power**
- **Call For More Information**

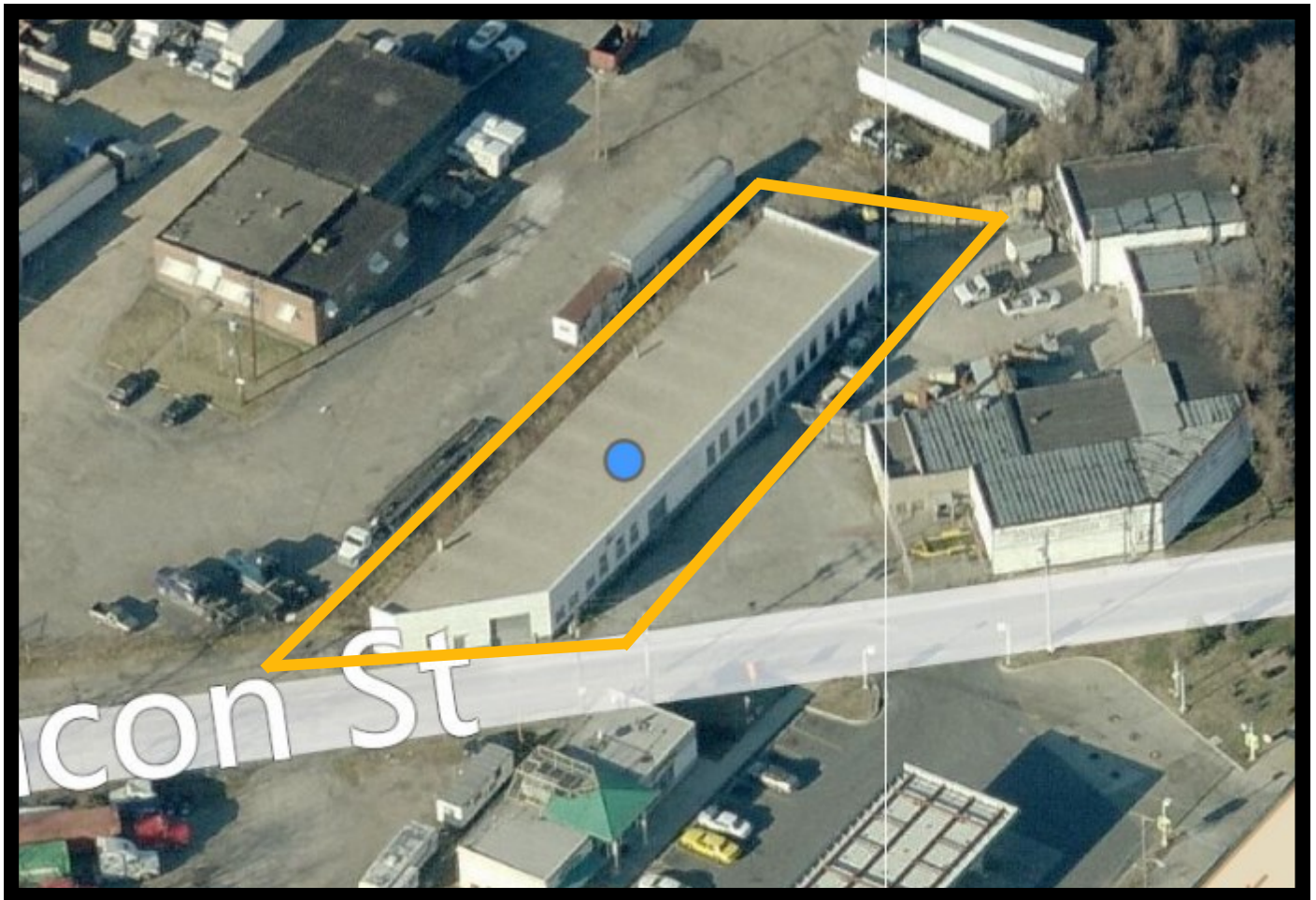
This property offering is subject to change without notice. All information is deemed reliable but not guaranteed.



Gold And Company

Commercial Real Estate in the Baltimore Metropolitan Area

1200 N. Macon St. Baltimore, MD 21205



Jim Chivers / Gary Glover
Gold And Company, LLC
5601 Newbury St.
Baltimore, MD 21209

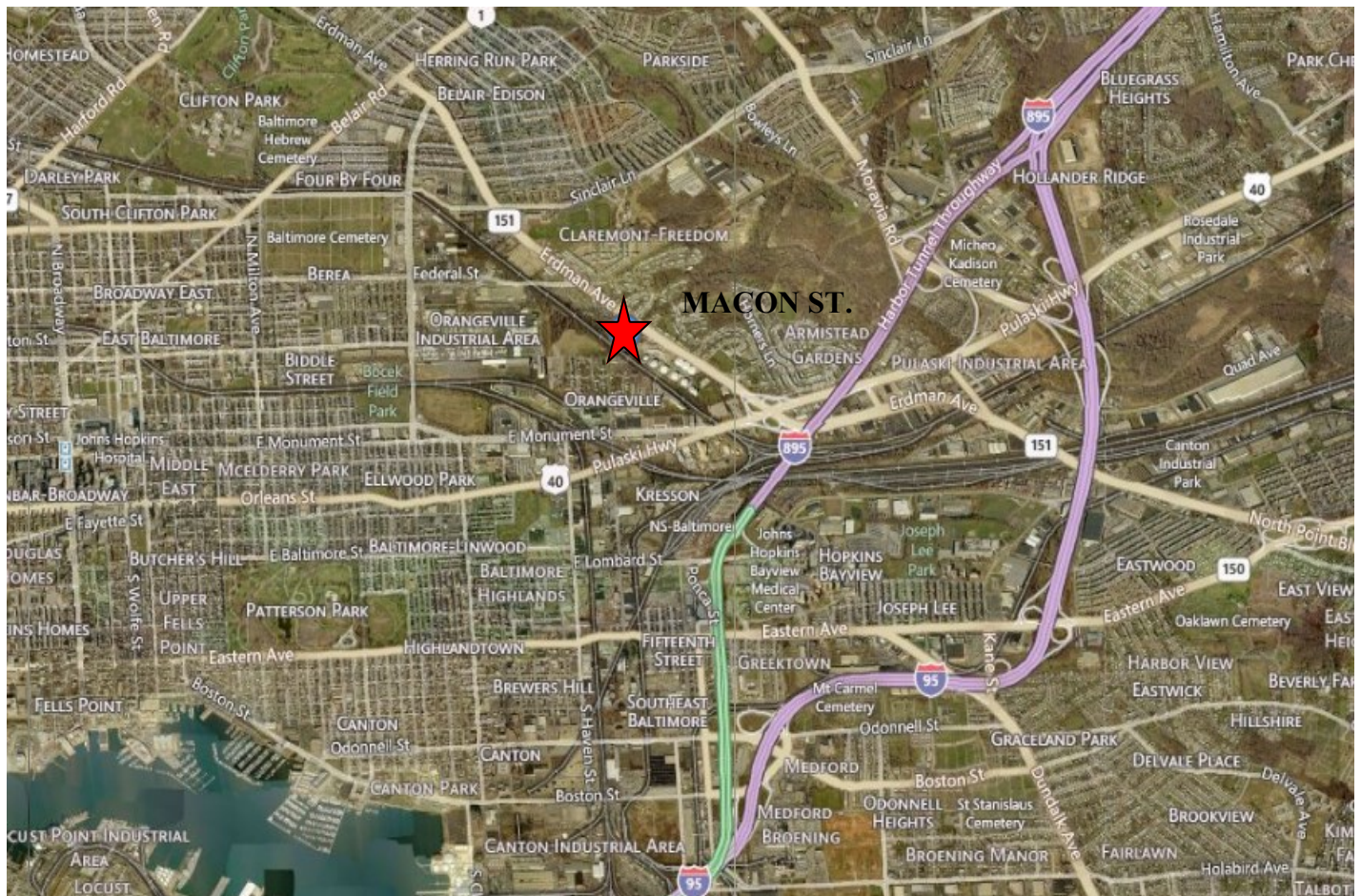
410.578.1300 (Office)
410.578.0200 (Fax)
www.goldcommercial.net



Gold And Company

Commercial Real Estate in the Baltimore Metropolitan Area

1200 N. Macon St. Baltimore, MD 21205



Jim Chivers / Gary Glover
Gold And Company, LLC
5601 Newbury St.
Baltimore, MD 21209

410.578.1300 (Office)
410.578.0200 (Fax)
www.goldcommercial.net