



Gold And Company

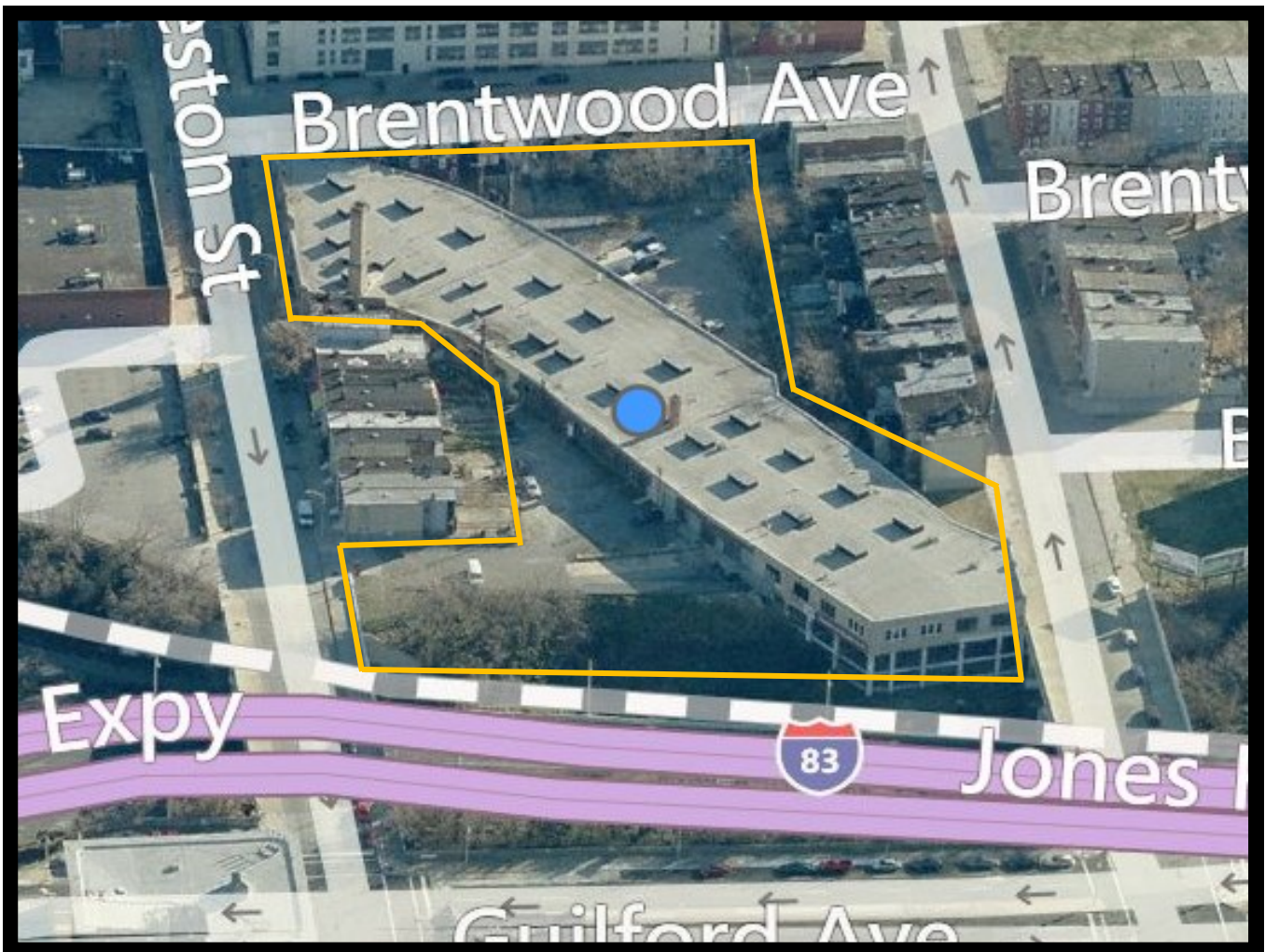
Commercial Real Estate in the Baltimore Metropolitan Area

407 / 409 & 439–457 E. Preston St.

Baltimore, MD 21202

54,000 sf

1.7 Acres



Mitch Gold / Jim Chivers

Gold And Company, LLC

5601 Newbury St.

Baltimore, MD 21209

410.578.1300 (Office)

410.578.0200 (Fax)

www.goldcommercial.net

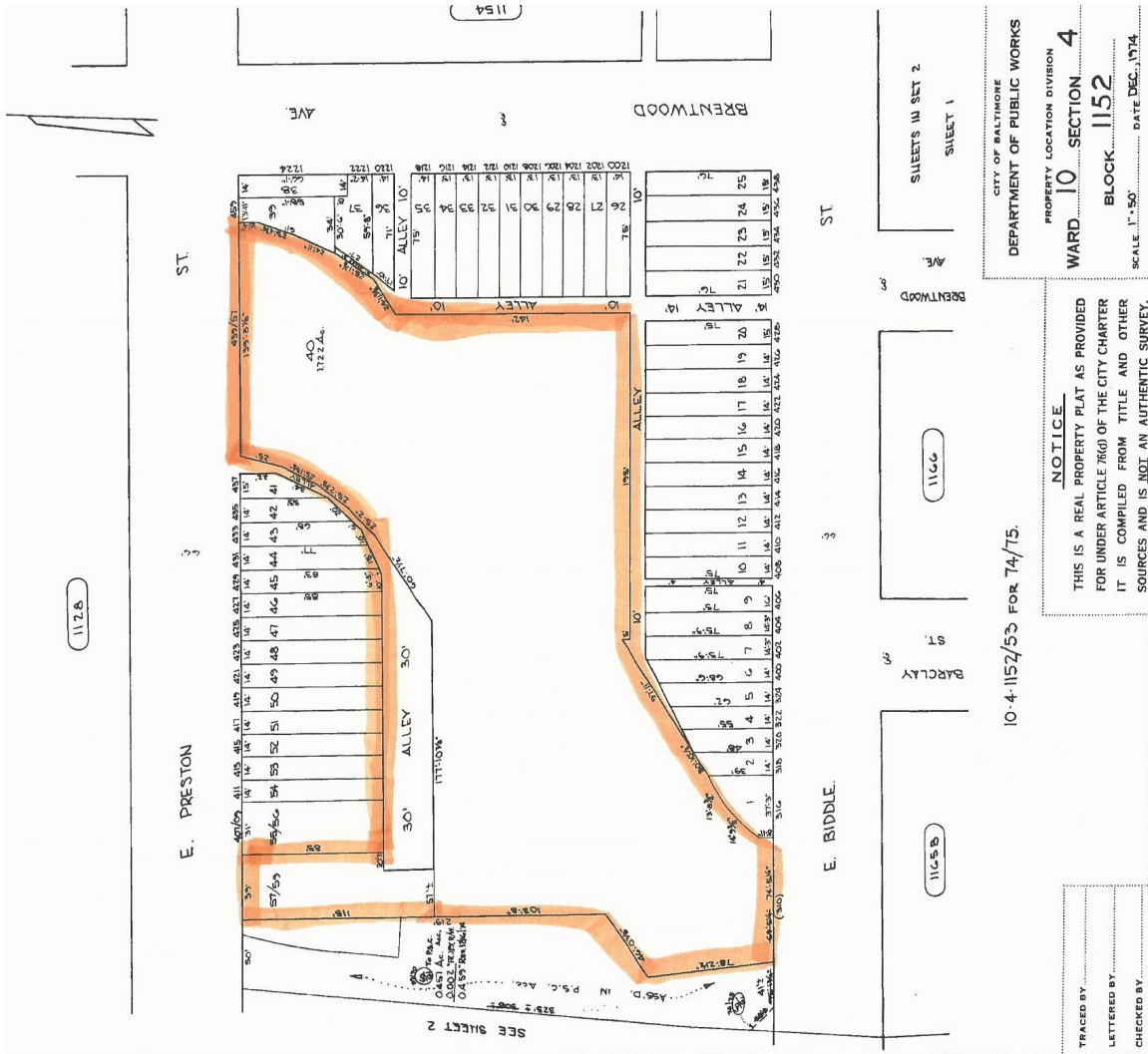


Gold And Company

Commercial Real Estate in the Baltimore Metropolitan Area

407 / 409 & 439-457 E. Preston St.

Baltimore, MD 21202



Mitch Gold / Jim Chivers

Gold And Company, LLC

5601 Newbury St.

Baltimore, MD 21209

410.578.1300 (Office)

410.578.0200 (Fax)

www.goldcommercial.net

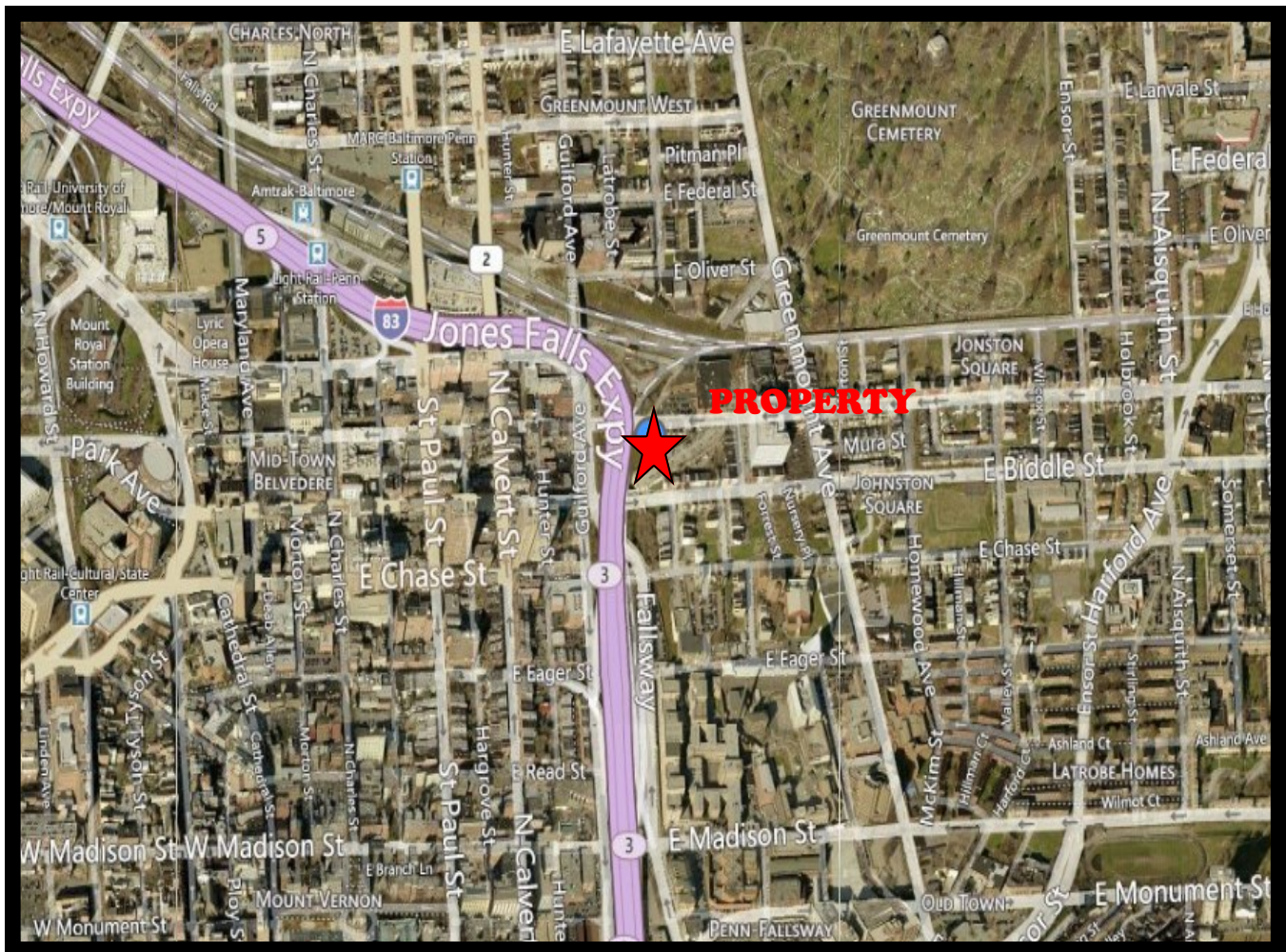


Gold And Company

Commercial Real Estate in the Baltimore Metropolitan Area

407 / 409 & 439–457 E. Preston St.

Baltimore, MD 21202



Mitch Gold / Jim Chivers

Gold And Company, LLC

5601 Newbury St.

Baltimore, MD 21209

410.578.1300 (Office)

410.578.0200 (Fax)

www.goldcommercial.net