



# **GOLD AND COMPANY, LLC**



**1701 E. Patapsco Ave. Baltimore, MD 21226**

## **Gold And Company, LLC**

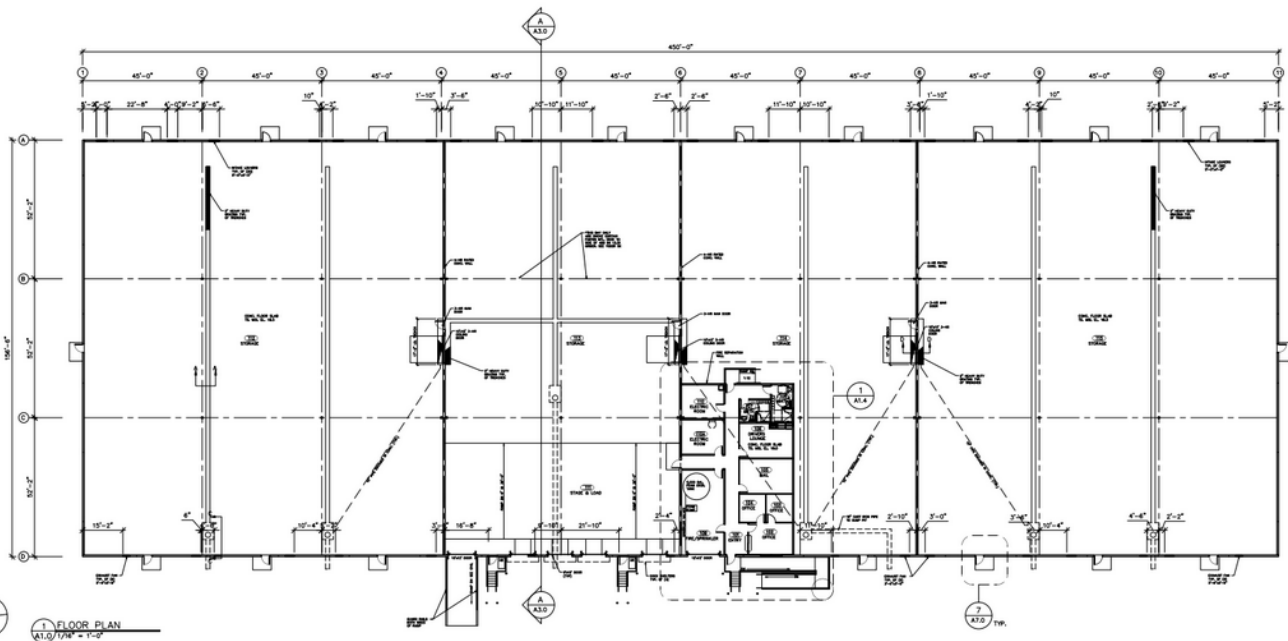
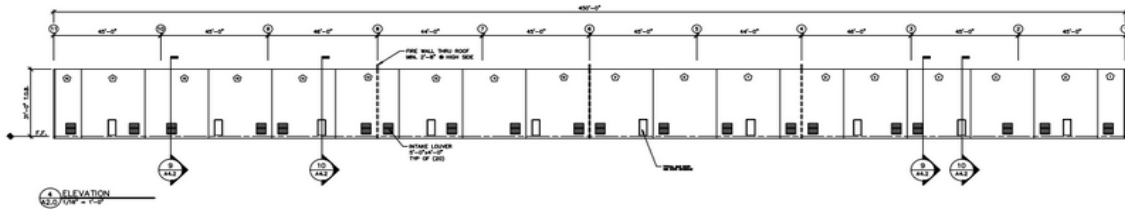
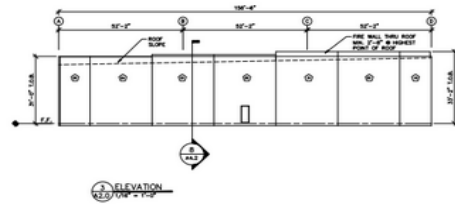
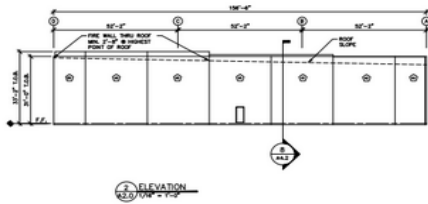
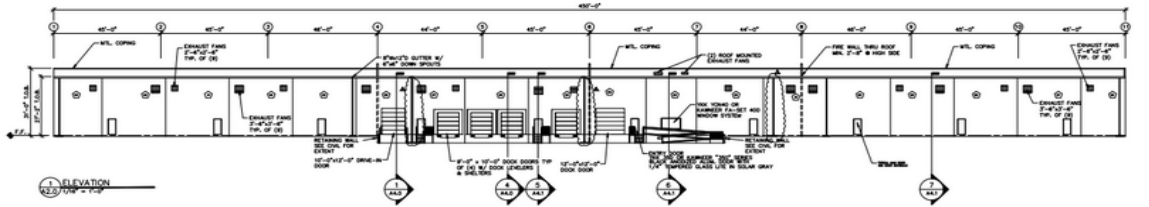
**5601 Newbury St.  
Baltimore, MD 21209**

**Jim Chivers / Mitch Gold  
Gary Glover  
Office: 410.578.1300  
Fax: 410.578.0200  
[www.goldcommercial.net](http://www.goldcommercial.net)**

- **70,000 sf bulk warehouse FOR LEASE**
- **Ceiling heights range from 24' to 31'**
- **Four dock doors and one drive-in**
- **Zoned M-3**
- **Designed for Chemical / Pesticide Handling**
- **Fairfield Industrial Area**
- **Tilt up construction**
- **Built in 2003**



# GOLD AND COMPANY, LLC



**Jim Chivers / Mitch Gold / Gary Glover**  
**Gold And Company, LLC**  
**5601 Newbury St.**  
**Baltimore, MD 21209**

**410.578.1300 (Office)**  
**410.578.0200 (Fax)**  
**www.goldcommercial.net**

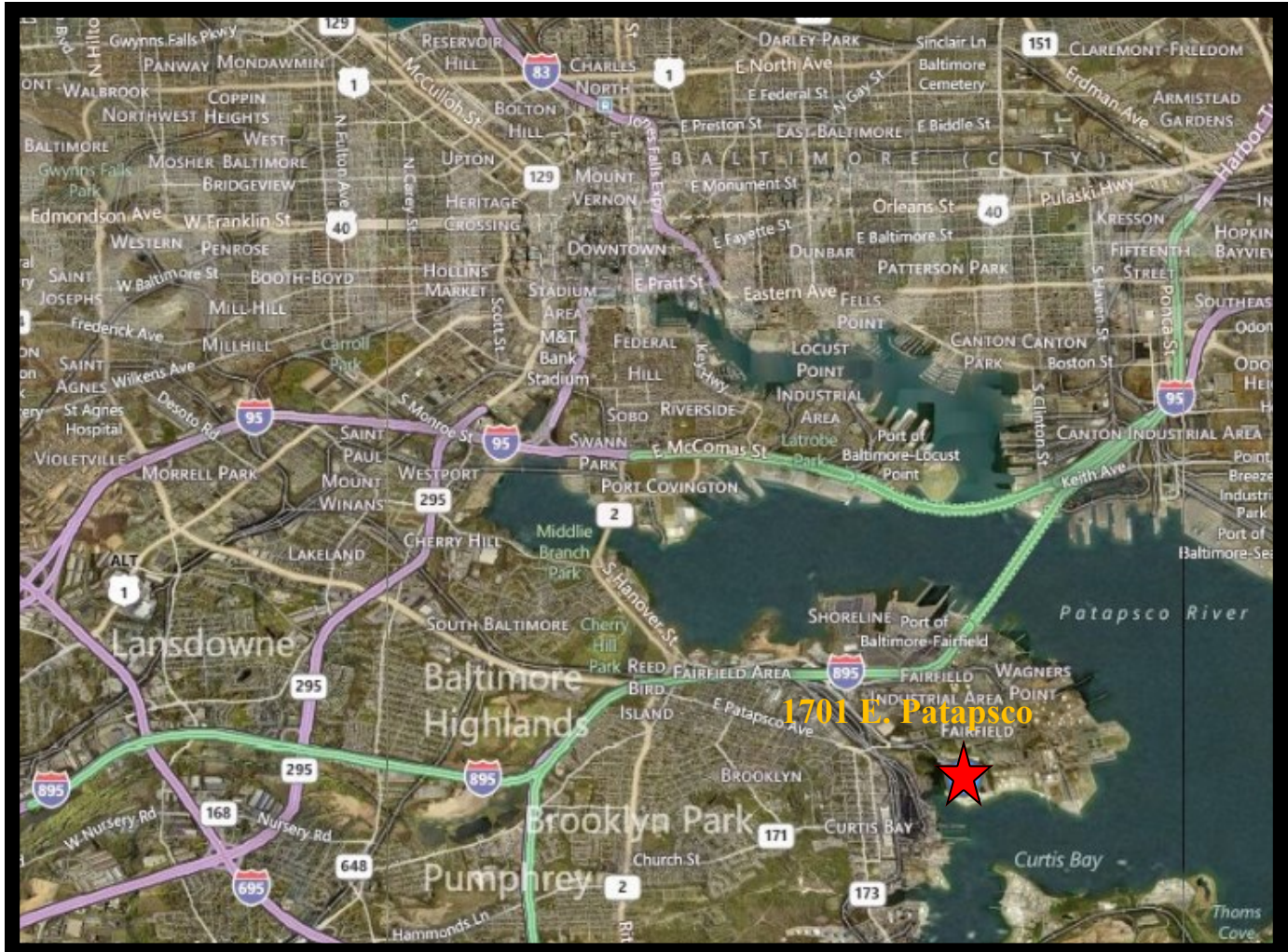




# Gold And Company

*Commercial Real Estate in the Baltimore Metropolitan Area*

**1701 E. Patapsco Ave. Baltimore, MD 21226**



**Jim Chivers / Mitch Gold / Gary Glover**  
**Gold And Company, LLC**  
**5601 Newbury St.**  
**Baltimore, MD 21209**

**410.578.1300 (Office)**  
**410.578.0200 (Fax)**  
**[www.goldcommercial.net](http://www.goldcommercial.net)**