



# **GOLD AND COMPANY, LLC**



**806 Race Rd. Baltimore, MD 21221**

## **Gold And Company, LLC**

**5601 Newbury St.  
Baltimore, MD 21209**

**Jim Chivers  
jim@goldcommercial.net  
443.928.7522 cell**

**Office: 410.578.1300**

**www.goldcommercial.net**

- **Industrial Property FOR SALE with  
Outside Contractors Storage**
- **+/- 13,000 sf Building**
- **2.14 Acres**
- **Baltimore County**
- **MH-IM Zoning**
- **Drive-In Warehouse**
- **Easy Access to Pulaski Hwy / I-695**
- **Nicely Appointed Office Buildout**

This property offering is subject to change without notice. All information is deemed reliable but not guaranteed.

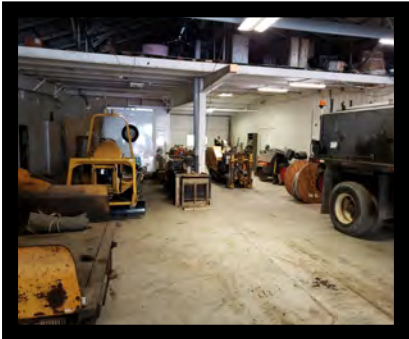
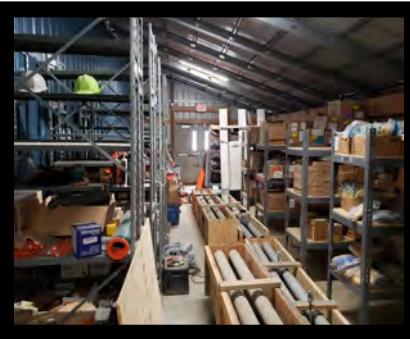
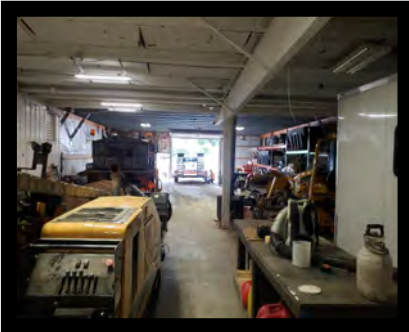


# Gold And Company

*Commercial Real Estate in the Baltimore Metropolitan Area*

**806 Race Rd. Baltimore, MD 21221**

## Property Pictures



**Jim Chivers**  
**Gold And Company, LLC**  
**5601 Newbury St.**  
**Baltimore, MD 21209**

**[www.goldcommercial.net](http://www.goldcommercial.net)**  
**410.578.1300**

This property offering is subject to change without notice. All information is deemed reliable but not guaranteed.

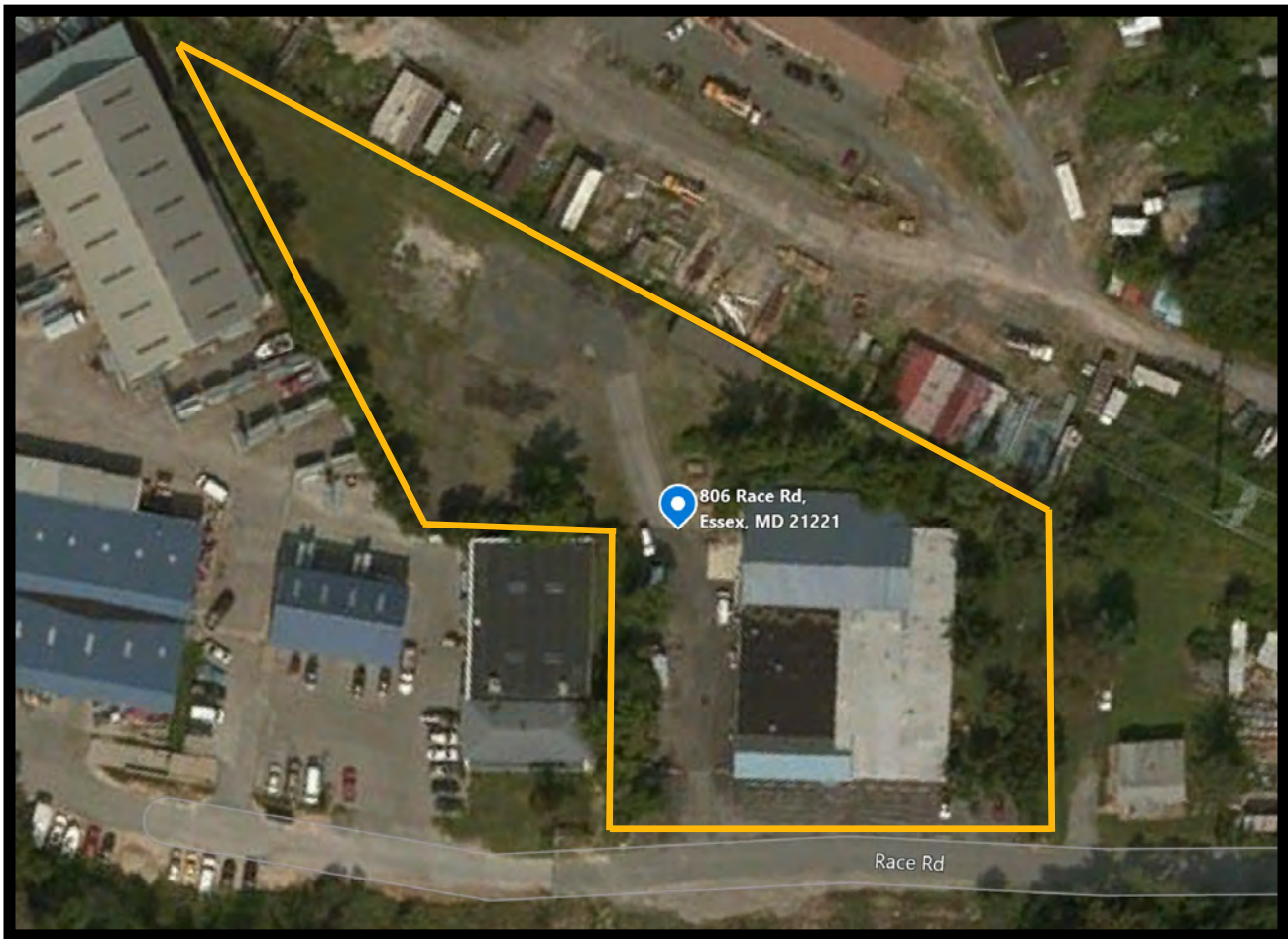


# Gold And Company

*Commercial Real Estate in the Baltimore Metropolitan Area*

**806 Race Rd. Baltimore, MD 21221**

## Aerial View



**Jim Chivers**  
**Gold And Company, LLC**  
**5601 Newbury St.**  
**Baltimore, MD 21209**

**410.578.1300 (Office)**  
**410.578.0200 (Fax)**  
**[www.goldcommercial.net](http://www.goldcommercial.net)**

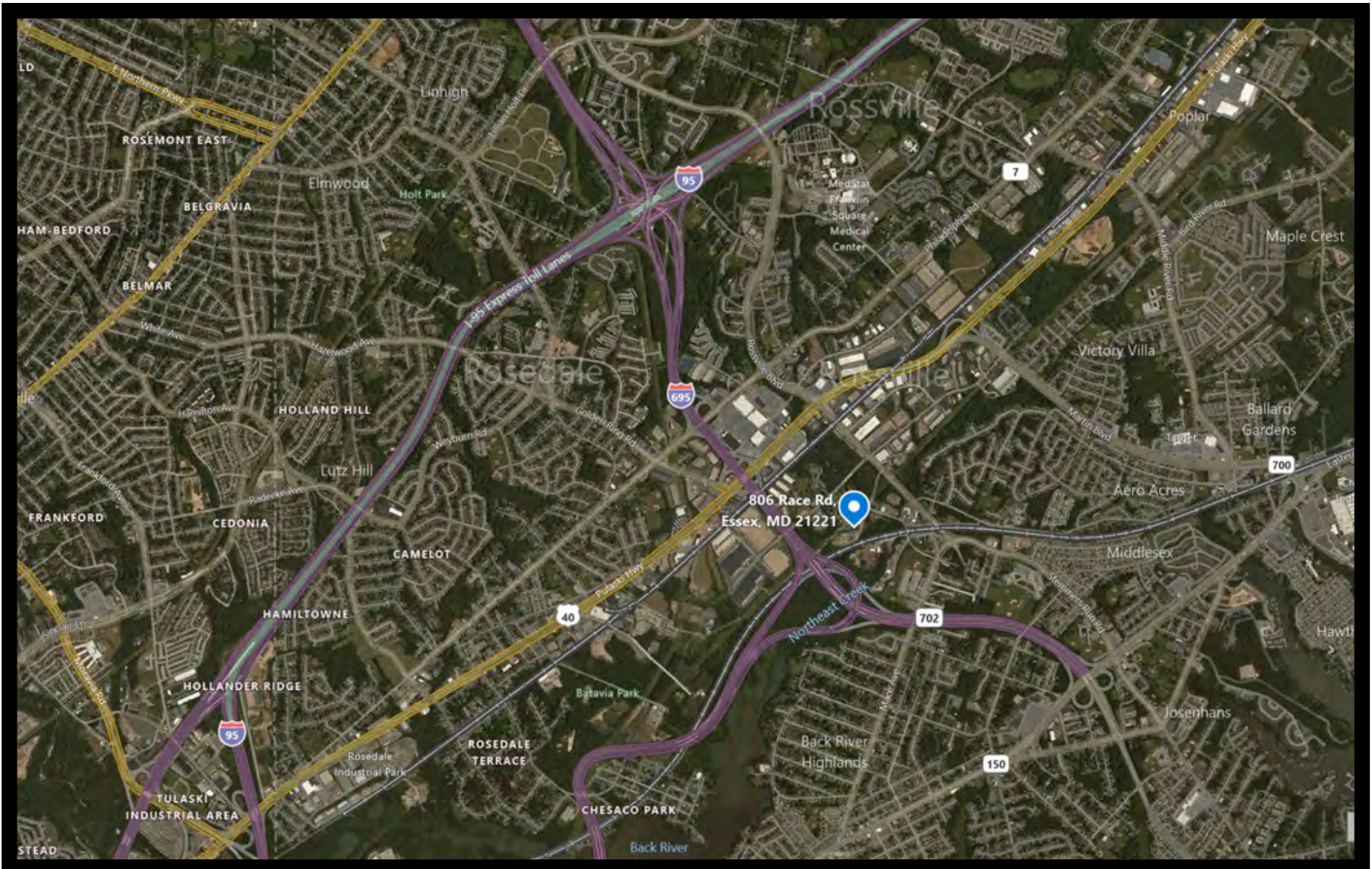


# Gold And Company

*Commercial Real Estate in the Baltimore Metropolitan Area*

**806 Race Rd. Baltimore, MD 21221**

## Map



**Jim Chivers**  
**Gold And Company, LLC**  
**5601 Newbury St.**  
**Baltimore, MD 21209**

**410.578.1300 (Office)**  
**410.578.0200 (Fax)**  
**[www.goldcommercial.net](http://www.goldcommercial.net)**