



# **GOLD AND COMPANY, LLC**



**30 E. Susquehanna Ave., Baltimore, MD 21286**

## **Gold And Company, LLC**

**5601 Newbury St.  
Baltimore, MD 21209**

**Jim Chivers / Mitch Gold  
Gary Glover**

**Office: 410.578.1300**

**Fax: 410.578.0200**

**[www.goldcommercial.net](http://www.goldcommercial.net)**

- **Office / Flex / Retail Building FOR SALE**
- **+/- 17,000 sf Building on Two Floors**
- **+/- 25 Off Street Parking Spaces**
- **8 Tenants—Call For Financial Info**
- **Ideal for Owner User w/ Rental Income**
- **Located Just off of Towsontown Blvd,  
Joppa Rd., and York Rd.**
- **Walking Distance to the Courthouse**
- **Call For More Information**

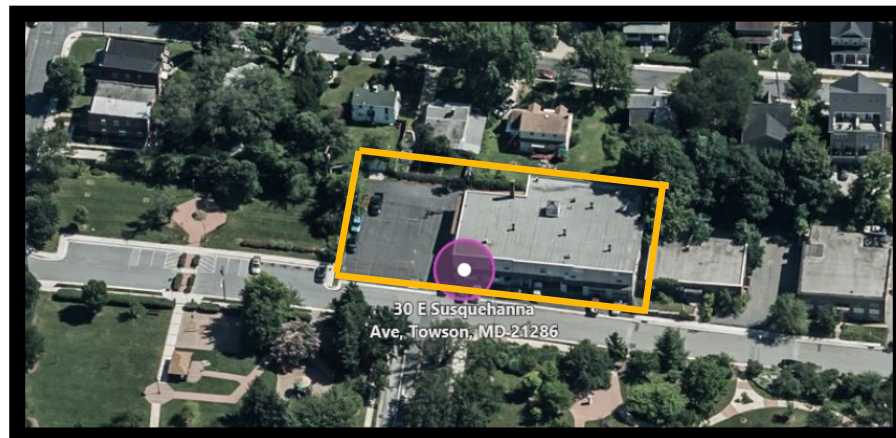


# Gold And Company

*Commercial Real Estate in the Baltimore Metropolitan Area*

**30 E. Susquehanna Ave., Baltimore, MD 21286**

## Map / Aerial



**Jim Chivers / Mitch Gold / Gary Glover**  
**Gold And Company, LLC**  
**5601 Newbury St.**  
**Baltimore, MD 21209**

**410.578.1300 (Office)**  
**410.578.0200 (Fax)**  
**[www.goldcommercial.net](http://www.goldcommercial.net)**