



# GOLD AND COMPANY, LLC



**1001 N. Rose St. Baltimore, MD 21205**

## **Gold And Company, LLC**

**5601 Newbury St.  
Baltimore, MD 21209**

**Jim Chivers / Gary Glover  
Office: 410.578.1300  
Fax: 410.578.0200  
www.goldcommercial.net**

- **Industrial / Flex Building FOR SALE**
- **+/- 12,000 sf Building**
- **Drive-In and Dock Loading**
- **East Baltimore City**
- **M-1-2 Zoning**
- **+/- 30,000 sf Lot Size**
- **16' - 18' Ceiling Height**
- **Taxes—\$5,069 Annually**
- **CALL FOR MORE INFORMATION**

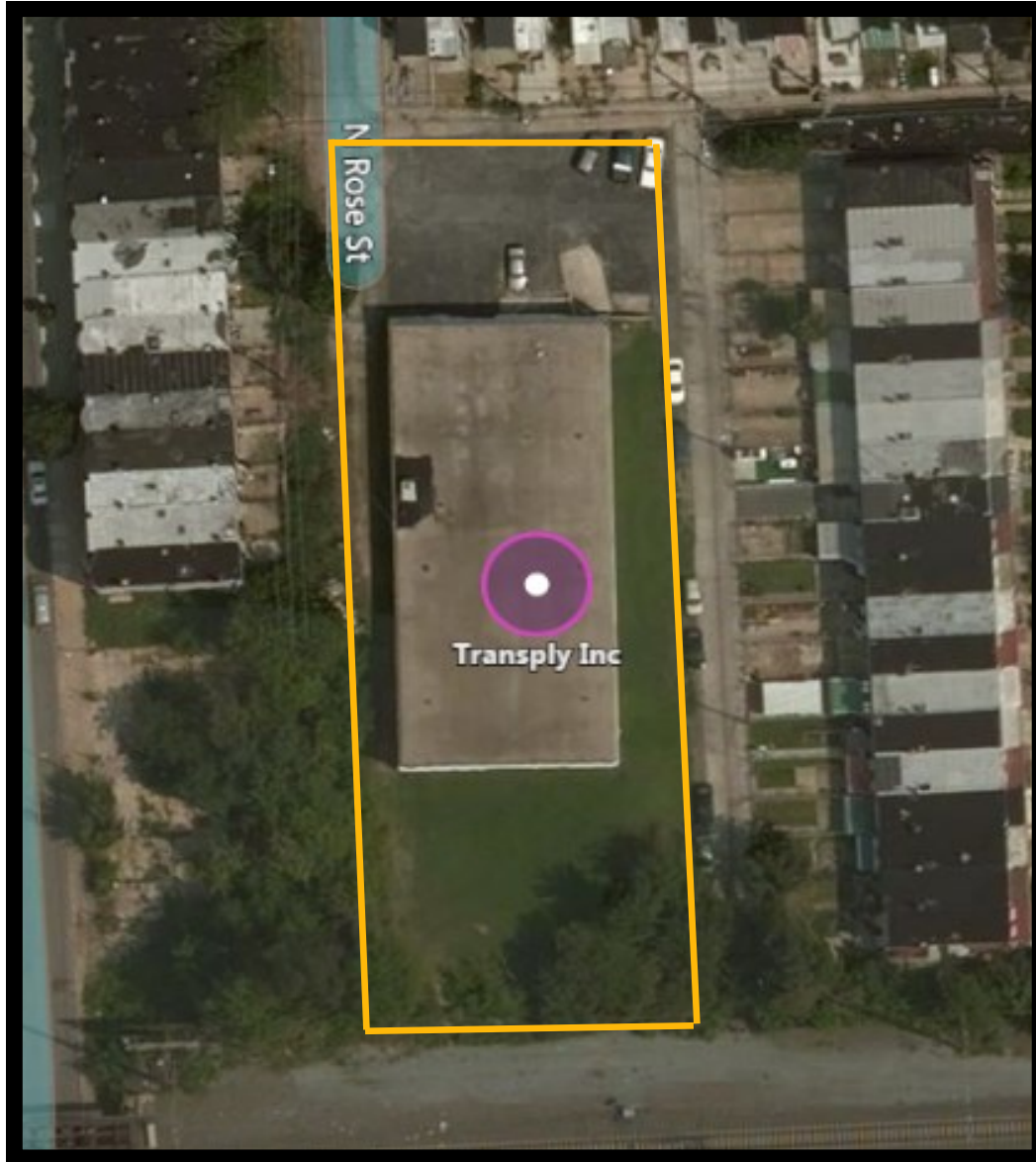
This property offering is subject to change without notice. All information is deemed reliable but not guaranteed.



# Gold And Company

*Commercial Real Estate in the Baltimore Metropolitan Area*

**1001 N. Rose St. Baltimore, MD 21205**



**Jim Chivers / Gary Glover**  
**Gold And Company, LLC**  
**5601 Newbury St.**  
**Baltimore, MD 21209**

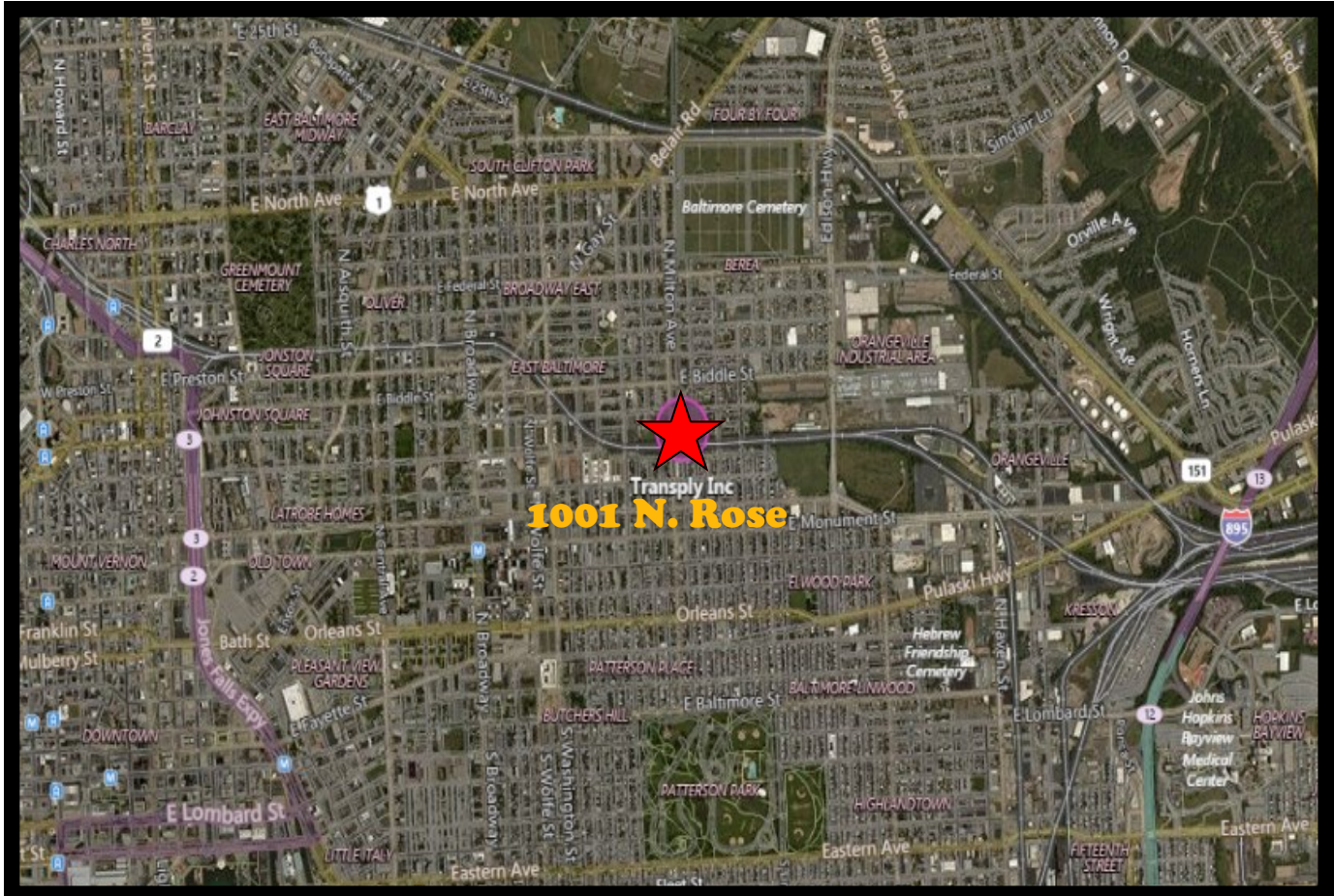
**410.578.1300 (Office)**  
**410.578.0200 (Fax)**  
**[www.goldcommercial.net](http://www.goldcommercial.net)**



# Gold And Company

*Commercial Real Estate in the Baltimore Metropolitan Area*

**1001 N. Rose St. Baltimore, MD 21205**



**Jim Chivers / Gary Glover**  
**Gold And Company, LLC**  
**5601 Newbury St.**  
**Baltimore, MD 21209**

**410.578.1300 (Office)**  
**410.578.0200 (Fax)**  
**[www.goldcommercial.net](http://www.goldcommercial.net)**