



# GOLD AND COMPANY, LLC



**4601 York Rd. Baltimore, MD 21212**

## Gold And Company, LLC

**5601 Newbury St.  
Baltimore, MD 21209**

**Jim Chivers / Mitch Gold  
Gary Glover  
Office: 410.578.1300  
www.goldcommercial.net**

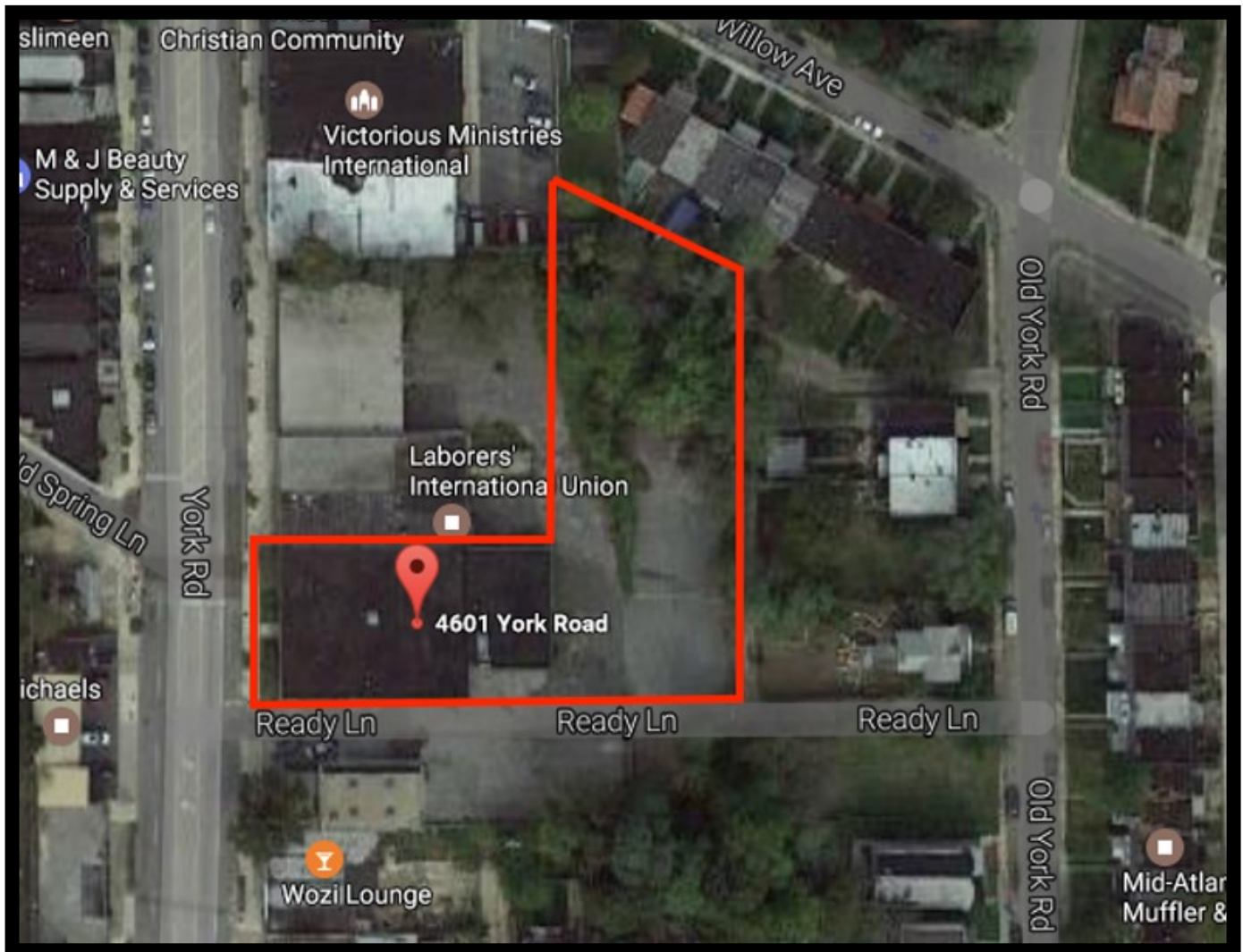
- **10,912 sf Flex Building AVAILABLE**
- **26,832 sf Land Area (Outside Storage / Parking)**
- **B-3-2 Zoning**
- **Excellent Frontage on York Rd.**
- **Roof Recently Replaced**
- **Dock Loading**
- **Central HVAC**
- **Call For More Information**



# Gold And Company

*Commercial Real Estate in the Baltimore Metropolitan Area*

**4601 York Rd. Baltimore, MD 21212**



**Jim Chivers / Mitch Gold / Gary Glover**  
**Gold And Company, LLC**  
**5601 Newbury St.**  
**Baltimore, MD 21209**

**410.578.1300 (Office)**  
**410.578.0200 (Fax)**  
**[www.goldcommercial.net](http://www.goldcommercial.net)**

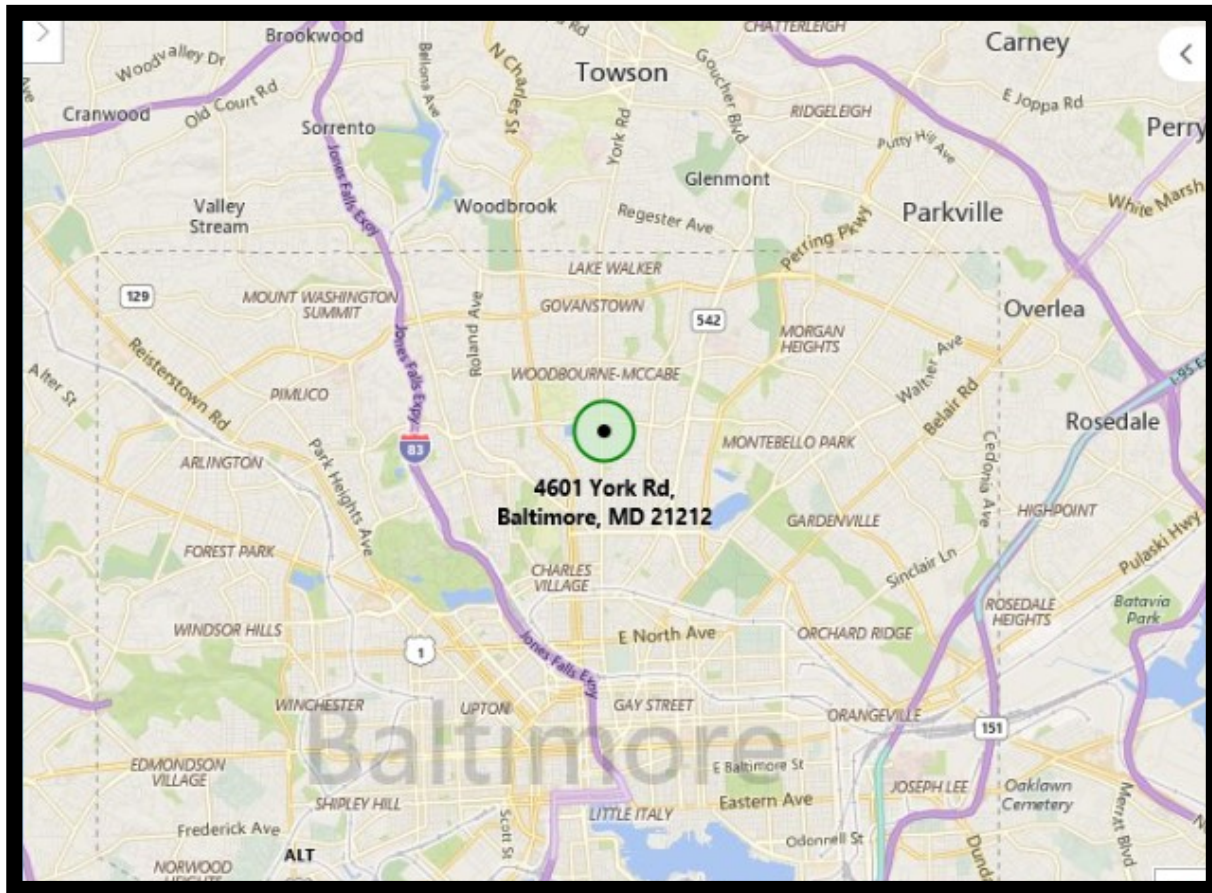


# Gold And Company

*Commercial Real Estate in the Baltimore Metropolitan Area*

**4601 York Rd. Baltimore, MD 21212**

## MAP



**Jim Chivers / Mitch Gold / Gary Glover**  
**Gold And Company, LLC**  
**5601 Newbury St.**  
**Baltimore, MD 21209**

**410.578.1300 (Office)**  
**410.578.0200 (Fax)**  
**[www.goldcommercial.net](http://www.goldcommercial.net)**