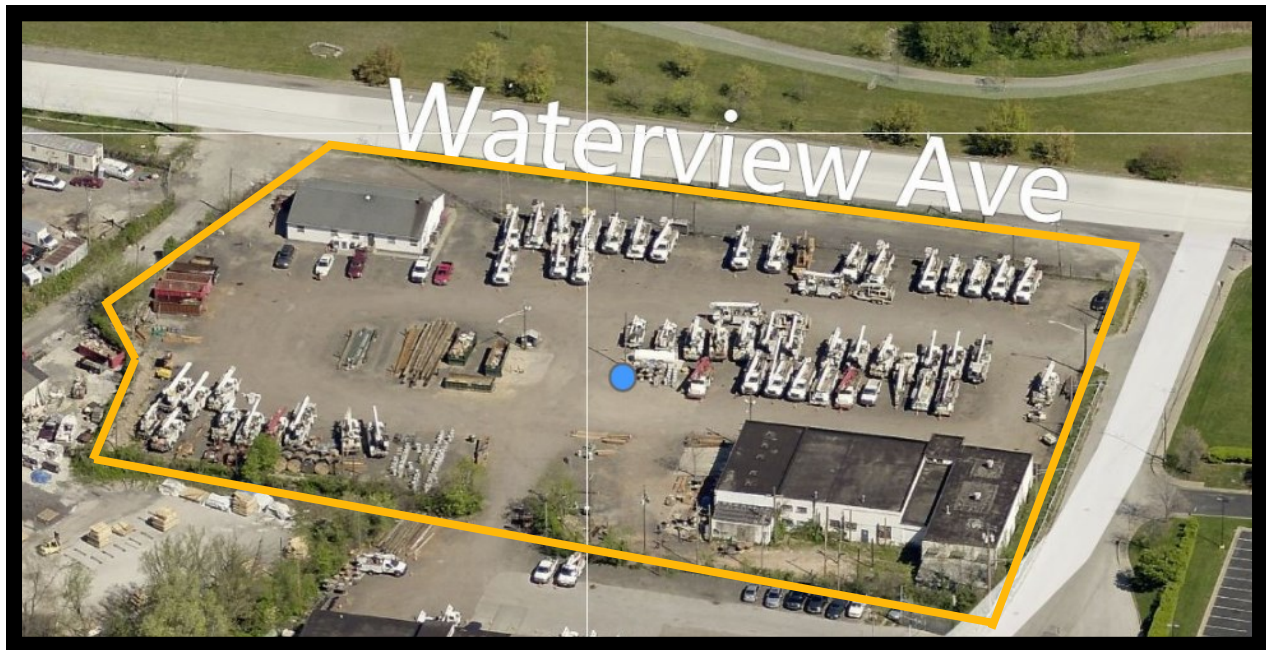




# **GOLD AND COMPANY, LLC**



**2940 Waterview Ave. Baltimore, MD 21230**

## **Gold And Company, LLC**

**5601 Newbury St.  
Baltimore, MD 21209**

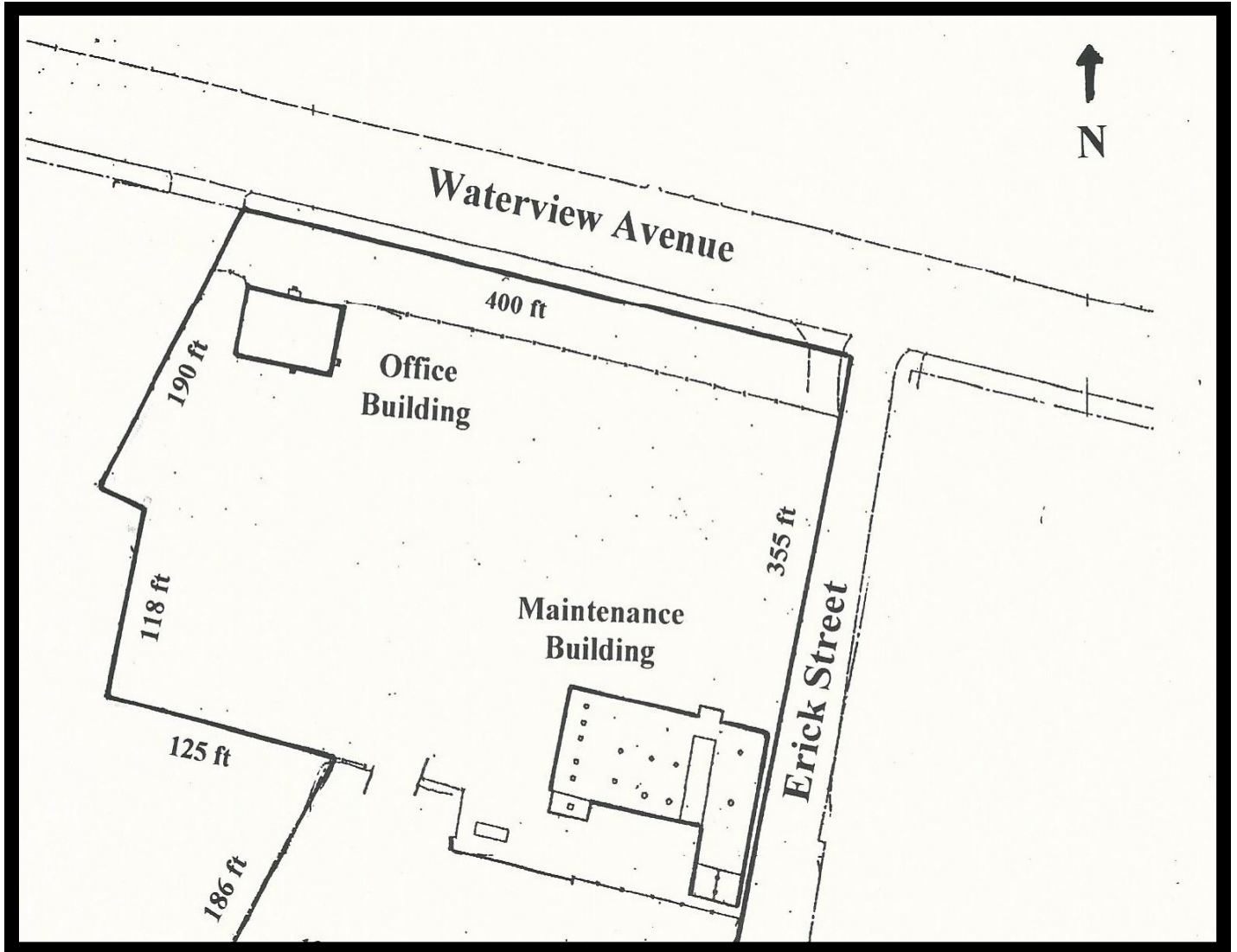
**Mitch Gold / Jim Chivers  
Gary Glover  
Office: 410.578.1300  
Fax: 410.578.0200  
[www.goldcommercial.net](http://www.goldcommercial.net)**

- **Industrial Property Available**
- **+/- December 2015 Availability**
- **Office Building—2,400 sf**
- **Maintenance Building—10,000 sf**
  - **5 Drive-in Doors**
  - **3 Loading Dock Doors**
- **3.1 Acres**
- **400' Frontage on Waterview Ave.**
- **Nearby Future Development**
- **Call For More Information**



# GOLD AND COMPANY, LLC

**2940 Waterview Ave. Baltimore, MD 21230**



**Mitch Gold / Jim Chivers / Gary Glover**  
**Gold And Company, LLC**  
**5601 Newbury St.**  
**Baltimore, MD 21209**

**410.578.1300 (Office)**  
**410.578.0200 (Fax)**  
**[www.goldcommercial.net](http://www.goldcommercial.net)**



# Gold And Company

*Commercial Real Estate in the Baltimore Metropolitan Area*

**2940 Waterview Ave. Baltimore, MD 21230**



**Mitch Gold / Jim Chivers / Gary Glover**  
**Gold And Company, LLC**  
**5601 Newbury St.**  
**Baltimore, MD 21209**

**410.578.1300 (Office)**  
**410.578.0200 (Fax)**  
**[www.goldcommercial.net](http://www.goldcommercial.net)**